



TOPAZ[®]

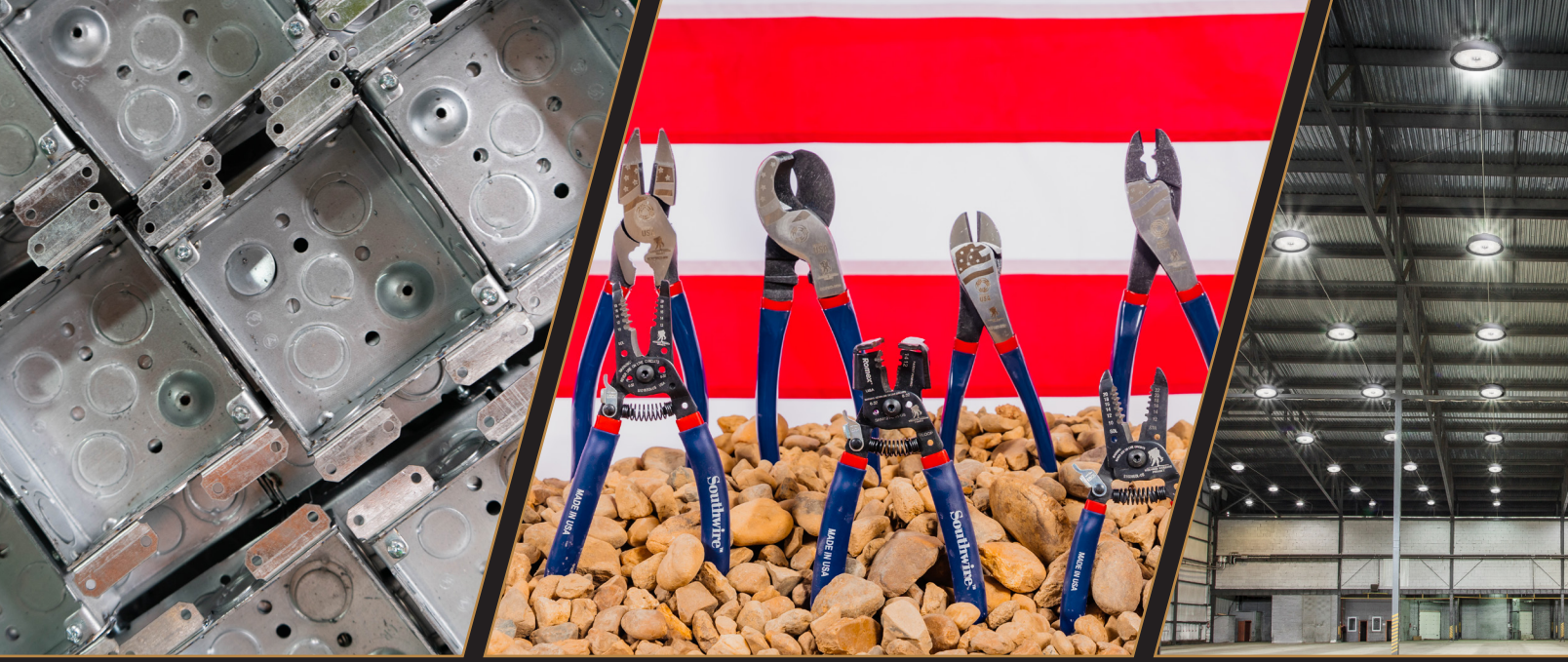
A Southwire Company

LIGHTING SOLUTIONS CATALOG



**BUILT FOR DURABILITY.
BUILT FOR RELIABILITY.
BUILT FOR WORK.™**

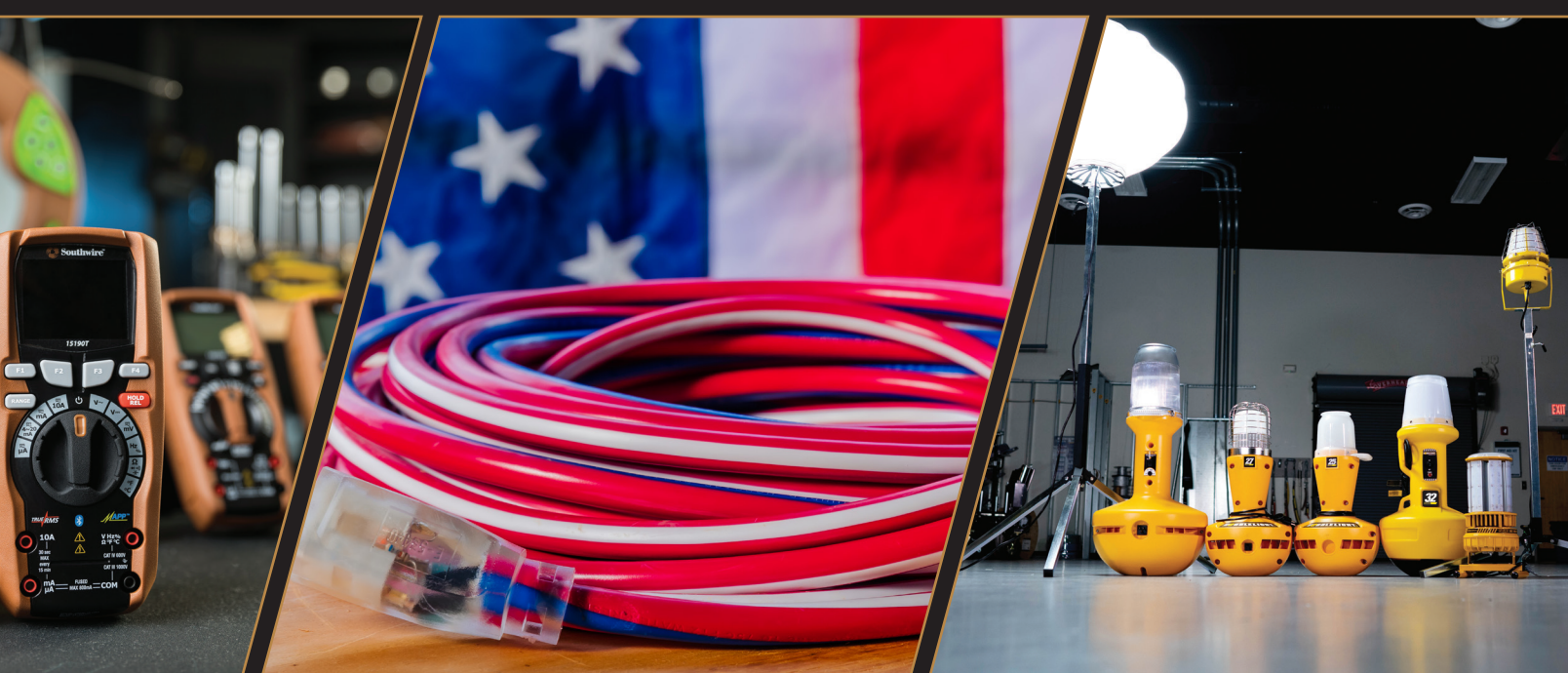
WWW.SOUTHWIRE.COM



THE COMPLETE SOUTHWIRE® SOLUTION

WIRE AND CABLE | TOOLS AND EQUIPMENT | POWER MANAGEMENT
ELECTRICAL COMPONENTS | LIGHTING SOLUTIONS





OUR STORY

As a family business, Southwire proudly continues building on our commitment to environmental stewardship and corporate sustainability by prioritizing stakeholder expectations, and supporting the wellbeing of our communities and the environment in which we live. To help us meet this commitment, we organize our sustainability strategy around five core tenets: Growing Green, Living Well, Giving Back, Doing Right, and Building Worth.

We Deliver Power...Responsibly®

We remain committed to the sustainability of our company for the next 100 years and beyond. As we strengthen this commitment, we continue to work hard every day to discover, develop and distribute sustainable solutions that exceed the expectations of our stakeholders around the world.

OUR MISSION

To be a **preferred provider** of solutions to the electrical industry by providing innovative products and services with exceptional quality.

OUR VALUES

Our **ONE Southwire** culture prioritizes the interests of our team members, customers, and communities through a continuous commitment to empowerment, trust, consistency, and inclusion.

OUR REACH

Nearly one in two new homes built in the United States contains our wire, and we produce half of the cable used to transmit and distribute electricity throughout the nation.

OUR PRODUCTS

Our product teams and dedicated resources work together to listen to and work with our customers, creating solutions that deliver unparalleled value through product innovation, safety and efficiency.

OUR SERVICE

Service is more than a word or a phone number; it's a tangible support system that assists you through the entire project cycle; from our knowledgeable customer service team, to our experienced field sales team, we're there every step of the way.



TABLE OF CONTENTS

GENERAL PURPOSE

CCT Selectable Lamps.....	9
A-Shape - A15.....	9
A-Shape - A19.....	10
A-Shape - A19 Economy.....	11
A-Shape - Performance.....	12
A-Shape - Commercial.....	13
Globe.....	13
Mini-Reflector (MR).....	14
Antique Filament.....	15
Decorative Candelabra.....	16
PAR - Performance.....	17
PAR - Commercial.....	18
Reflector (R & BR).....	19
Reflector (R & BR) - Performance Series.....	20

PLUG BASE (CFL REPLACEMENT)

PLT Retrofit - Ballast Bypass - CCT Selectable.....	22
PLT Retrofit - Ballast Compatible - CCT Selectable.....	23
PLL Retrofit.....	24

LINEAR TUBES

T8 Ballast Bypass - CCT Selectable.....	26
T8 Ballast Bypass - High Efficacy.....	27
T8 Ballast Bypass.....	28
T8 Ballast Bypass - Clear.....	29
T8 Ballast Bypass - Emergency Battery Backup.....	30
T8 Ballast Compatible.....	31
T8 - Dual Mode.....	32
T8 U-Bend.....	33
T5 Ballast Bypass/Ballast Compatible.....	34

HID REPLACEMENT

High Bay Lighting.....	36
Post Top Lighting.....	37
Wall Pack & Area Lighting - Power & CCT Selectable.....	38
Wall Pack & Area Lighting - Fold-Out Array.....	39

RECESSED DOWNLIGHTING

Modules/Trims - Performance Series - CCT Selectable.....	41
Modules/Trims - Economy Series.....	42
Modules/Trims - Color Trims.....	44
Slim Fit - CCT Selectable.....	45
Slim Fit - Deep Regress Downlights - CCT Selectable.....	46
Slim Fit - Deep Regress Downlights - CCT Selectable - Color Trims.....	47
Housings - New Construction/Remodel.....	48
Housings - Fire Rated.....	49
Commercial Downlights.....	50

SURFACE MOUNT

Surface Mount Downlights - CCT Selectable.....	52
Surface Mount Disk Lights - CCT Selectable.....	53
Surface Mount Disk Lights.....	54
Surface Mount Disk Lights with Motion Sensor.....	55

COMMERCIAL

Flat Panels - Power & CCT Selectable.....	57
Flat Panels.....	58
Flat Panels Accessories.....	59
Troffers - Power & CCT Selectable.....	60
Troffers - Low Profile.....	61
Troffers - Accessories.....	62
Linear Strip Lights.....	63
Linear Strip Lights - CCT Selectable.....	64
Linear - Vapor Tight - Power & CCT Selectable.....	65
Linear - Vapor Tight.....	66
Linear - Vapor Tight - Tri-Proof.....	67
Linear - Utility Wraparound.....	68
Linear - Modern Wraparound.....	69

INDUSTRIAL

Round High Bay - Power Selectable.....	71
Round High Bay - Power and CCT Selectable.....	72
Round High Bay - Satellite Pro.....	73
Linear High Bay - Power and CCT Selectable.....	74
Linear High Bay.....	75

EXIT & EMERGENCY

Exit Signs.....	77
Exit & Emergency Lighting - NYC Approved.....	78
Exit & Emergency Combo.....	79
Exit & Emergency Combo - Remote Capable.....	79
Emergency Lighting.....	80
Exit & Emergency Light Remote Heads.....	80

AREA/SITE

Area Lights - Power & CCT Selectable.....	82
Area Lights - Swoptics (Switchable Optics).....	83
Universal Mounting Brackets for Area & Flood Lights.....	84
Area - Barn/Yard Light.....	85
Area - Barn/Yard Light - CCT Selectable.....	86
Flood Lights - Flood Lights - Power & CCT Selectable.....	86
Security Lights.....	90
Wall Packs - Compact - CCT Selectable.....	91
Wall Packs - Traditional - Power & CCT Selectable.....	92
Wall Packs - Traditional - Economy.....	93
Wall Packs - Traditional with Emergency Backup.....	94
Wall Packs - Adjustable - Power & CCT Selectable.....	95
Wall Packs - Full Cutoff - Power & CCT Selectable.....	96
Sports Light - Power Selectable.....	97

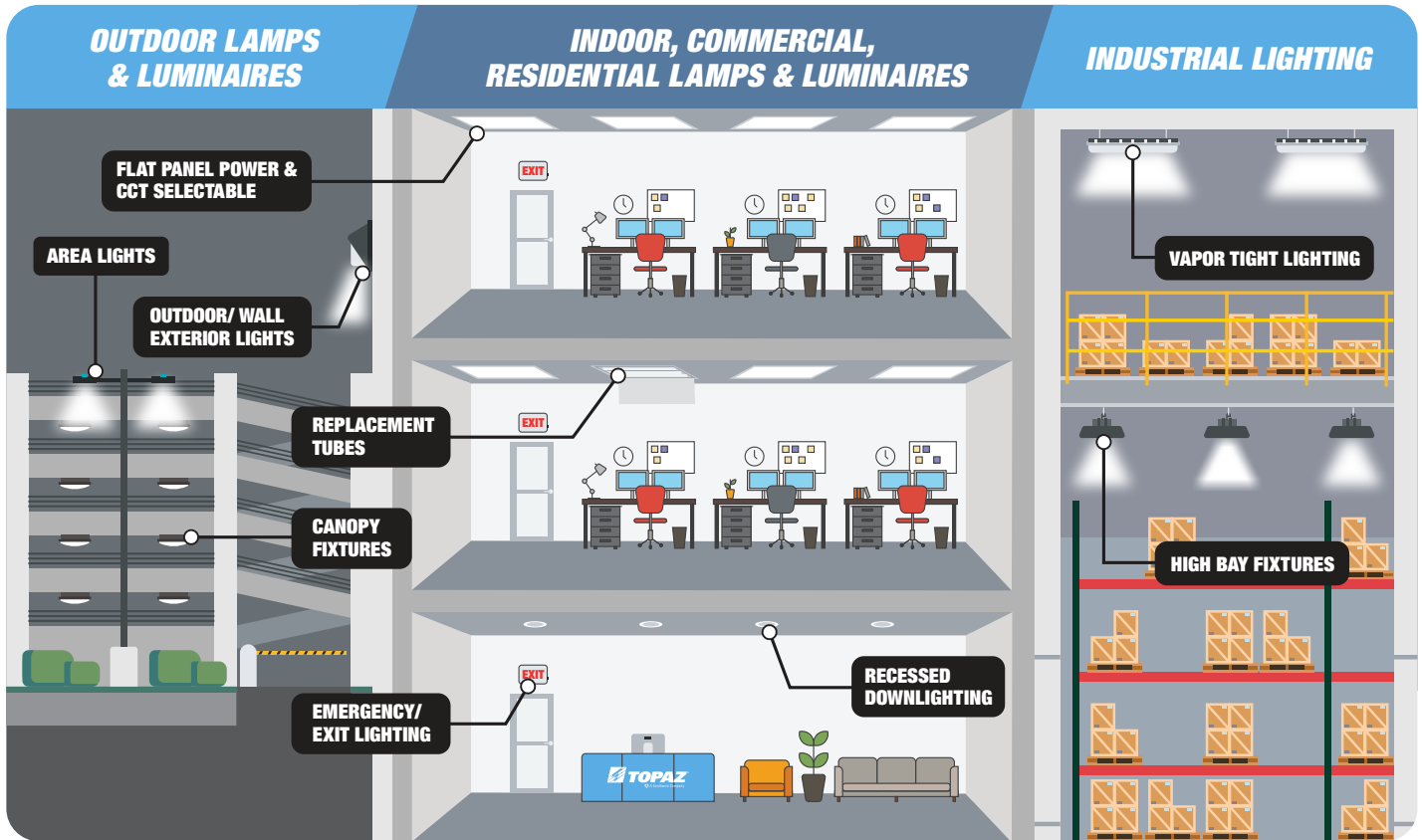
CANOPY/GARAGE

Canopy - Round - Power & CCT Selectable.....	99
Canopy - Square.....	100

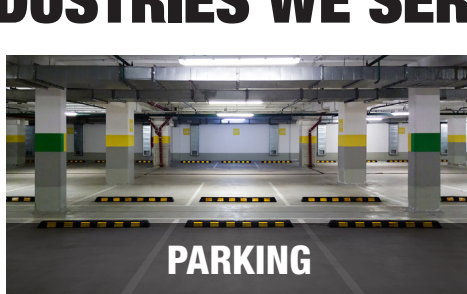
CROSS REFERENCE	101-104
------------------------------	---------

LISTINGS & RATINGS	105
-------------------------------------	-----

LIGHTING SOLUTIONS



INDUSTRIES WE SERVE





NEED LIGHTING SUPPORT?

OUR SERVICES



**Complimentary
Lighting Layouts**



**Technical
Support**



**Sample
Requests**

CONTACT US TODAY



LIGHTING@SOUTHWIRE.COM

LED LAMPS

GENERAL

PURPOSE

CCT Selectable Lamps

A-Shape – A15

A-Shape – A19

A-Shape - A21 Economy

A-Shape - Performance

A-Shape - Commercial

Globe

Mini-Reflector (MR)

Antique Filament

Decorative Candelabra

PAR - Performance

PAR - Commercial

Reflector (R & BR)

Reflector (R & BR) - Performance Series



GENERAL PURPOSE

CCT SELECTABLE LAMPS

- High efficacy, up to 88 lumens per watt (LPW)
- 15,000 hours lifetime (L70)
- Ambient operating temperature: -4°F to 104°F
- Suitable for open and enclosed fixtures



A19

BR30

PAR38



SPECIFICATIONS

MODEL #	ORDER CODE	LUMENS	WATTAGE	INPUT VOLTAGE	CCT	CRI	BEAM ANGLE	BASE	MOL	INCANDESCENT REPLACEMENT WATTAGE	DIMMABLE
A19											
LA19-9W-CTS-D	73664	800	9W	120V	Selectable	80	230°	E26	4.4"	60W	Yes
BR30											
LBR30-9W-CTS-D	73665	800	9W	120V	Selectable	80	120°	E26	5.19"	85W	Yes
PAR38											
LP38-14W-CTS-FL-D	73666	1,200	14W	120V	Selectable	80	40°	E26	5.08"	120W	Yes

A-SHAPE - A15

- High efficacy, 92 lumens per watt (LPW)
- 15,000 hours lifetime (L70)
- Ambient operating temperature: -4°F to 104°F
- Suitable for enclosed fixtures
- White plastic housing with frosted lens



SPECIFICATIONS

MODEL #	ORDER CODE	LUMENS	WATTAGE	INPUT VOLTAGE	CCT	CRI	BEAM ANGLE	BASE	MOL	INCANDESCENT REPLACEMENT WATTAGE	DIMMABLE
LA15-7W-830-D	73487	600	6.5W	120V	3000K	80	150°	E26	3.44"	50W	Yes
LA15-7W-850-D	73488	600	6.5W	120V	5000K	80	150°	E26	3.44"	50W	Yes

LED LAMPS

GENERAL PURPOSE

A-SHAPE - A19

- High efficacy, up to 107 lumens per watt (LPW)
- 25,000 hours lifetime (L70)
- Ambient operating temperature: -4°F to 104°F
- Suitable for enclosed fixtures
- Shatter-resistant plastic lens



SPECIFICATIONS

MODEL #	ORDER CODE	LUMENS	WATTAGE	INPUT VOLTAGE	CCT	CRI	BEAM ANGLE	BASE	MOL	INCANDESCENT REPLACEMENT WATTAGE	DIMMABLE	ENERGY STAR
Omni-Directional												
LA19/6W/27K/D-46	74370	480	6W	120V	2700K	80	220°	E26	4.3"	40W	Yes	Yes
LA19/6W/30K/D-46	74371	480	6W	120V	3000K	80	220°	E26	4.3"	40W	Yes	Yes
LA19/6W/40K/D-46	74372	480	6W	120V	4000K	80	220°	E26	4.3"	40W	Yes	Yes
LA19/6W/50K/D-46	74373	480	6W	120V	5000K	80	220°	E26	4.3"	40W	Yes	Yes
LA19-9W-927-D	74370	800	9W	120V	2700K	90	230°	E26	4.4"	60W	Yes	Yes
LA19-9W-930-D	73045	800	9W	120V	3000K	90	230°	E26	4.4"	60W	Yes	Yes
LA19-9W-940-D	73046	800	9W	120V	4000K	90	230°	E26	4.4"	60W	Yes	Yes
LA19-9W-950-D	73047	800	9W	120V	5000K	90	230°	E26	4.4"	60W	Yes	Yes
LA19/11W/27K/D-46	74378	1,100	11W	120V	2700K	80	220°	E26	4.3"	75W	Yes	Yes
LA19/11W/30K/D-46	74379	1,100	11W	120V	3000K	80	220°	E26	4.3"	75W	Yes	Yes
LA19/11W/40K/D-46	74380	1,100	11W	120V	4000K	80	220°	E26	4.3"	75W	Yes	Yes
LA19/11W/50K/D-46	74381	1,100	11W	120V	5000K	80	220°	E26	4.3"	75W	Yes	Yes
LA19/15W/27K/D-46	74382	1,600	15W	120V	2700K	80	220°	E26	4.6"	100W	Yes	Yes
LA19/15W/30K/D-46	74383	1,600	15W	120V	3000K	80	220°	E26	4.6"	100W	Yes	Yes
LA19/15W/40K/D-46	74384	1,600	15W	120V	4000K	80	220°	E26	4.6"	100W	Yes	Yes
LA19/15W/50K/D-46	74385	1,600	15W	120V	5000K	80	220°	E26	4.6"	100W	Yes	Yes
LA19/9W/27K/GU24D	74386	800	9.8W	120V	2700K	80	220°	GU24	4.3"	60W	Yes	Yes
LA19/9W/40K/GU24D	74388	800	9.8W	120V	4000K	80	220°	GU24	4.3"	60W	Yes	Yes
LA19/11W/30K/GU24D	74389	1,100	11W	120V	3000K	80	220°	GU24	4.3"	75W	Yes	Yes
3-Way												
LA19/12/27K/3W-46	78983	280/950/1,200	3/9/12W	120V	2700K	80	300°	E26d	4.6"	30/70/100W	---	Yes
LA19/12/30K/3W-46	78984	280/950/1,200	3/9/12W	120V	3000K	80	300°	E26d	4.6"	30/70/100W	---	Yes
Colors												
LA19/3/BLUE-46	79664	25	2.5W	120V	-	-	220°	E26	4.3"	---	---	---
LA19/3/GREEN-46	79666	135	2.5W	120V	-	-	220°	E26	4.3"	---	---	---
LA19/3/RED-46	79668	70	2.5W	120V	-	-	220°	E26	4.3"	---	---	---
LA19/3/YELLOW-46	79670	70	2.5W	120V	-	-	220°	E26	4.3"	---	---	---

LED LAMPS

GENERAL PURPOSE

A-SHAPE - A19 ECONOMY

- High efficacy, up to 107 lumens per watt (LPW)
- 15,000 hours lifetime (L70)
- Ambient operating temperature: -4°F to 104°F
- Shatter resistant plastic lens with E26 base
- Suitable for use in enclosed fixtures



SPECIFICATIONS

MODEL #	ORDER CODE	LUMENS	WATTAGE	INPUT VOLTAGE	CCT	CRI	BEAM ANGLE	BASE	MOL	INCANDESCENT REPLACEMENT WATTAGE
LA19-9W-827	75856	750	9W	120V	2700K	80	230°	E26	4.09"	60W
LA19-9W-830	75857	750	9W	120V	3000K	80	230°	E26	4.09"	60W
LA19-9W-840	75858	750	9W	120V	4000K	80	230°	E26	4.09"	60W
LA19-9W-850	75859	750	9W	120V	5000K	80	230°	E26	4.09"	60W
LA19-9W-865	75860	750	9W	120V	6500K	80	230°	E26	4.09"	60W
LA19-14W-827	75861	1,500	14W	120V	2700K	80	230°	E26	4.09"	100W
LA19-14W-830	75862	1,500	14W	120V	3000K	80	230°	E26	4.09"	100W
LA19-14W-840	75863	1,500	14W	120V	4000K	80	230°	E26	4.09"	100W
LA19-14W-850	75864	1,500	14W	120V	5000K	80	230°	E26	4.09"	100W

LED LAMPS

GENERAL PURPOSE

A-SHAPE - PERFORMANCE

- High efficacy, up to 100 lumens per watt (LPW)
- Up to 25,000 hours lifetime (L70)
- Ambient operating temperature: -4°F to 104°F
- Frosted polycarbonate lens
- A19 lamps not suited for enclosed fixtures
- A21 lamps suitable for enclosed fixtures



SPECIFICATIONS

MODEL #	ORDER CODE	LUMENS	WATTAGE	INPUT VOLTAGE	CCT	CRI	BEAM ANGLE	BASE	MOL	INCANDESCENT REPLACEMENT WATTAGE	DIMMABLE	ENERGY STAR	T20	T24 JAB
A19														
LA19-9W-927-D	74370	800	9W	120V	2700K	90	230°	E26	4.4"	60W	Yes	Yes	Yes	Yes
LA19-9W-930-D	73045	800	9W	120V	3000K	90	230°	E26	4.4"	60W	Yes	Yes	Yes	Yes
LA19-9W-940-D	73046	800	9W	120V	4000K	90	230°	E26	4.4"	60W	Yes	Yes	Yes	Yes
LA19-9W-950-D	73047	800	9W	120V	5000K	90	230°	E26	4.4"	60W	Yes	Yes	Yes	Yes
LA19/10/927/GU24D	70725	800	10W	120V	2700K	90	220°	GU24	4.4"	60W	Yes	Yes	Yes	Yes
LA19/10/930/GU24D	70726	800	10W	120V	3000K	90	220°	GU24	4.4"	60W	Yes	Yes	Yes	Yes
LA19/10/940/GU24D	70727	800	10W	120V	4000K	90	220°	GU24	4.4"	60W	Yes	---	Yes	Yes
LA19/12W/927/D-33	70989	1100	12W	120V	2700K	90	230°	E26	4.4"	75W	Yes	Yes	Yes	Yes
LA19/12W/930/D-33	70992	1100	12W	120V	3000K	90	230°	E26	4.4"	75W	Yes	Yes	Yes	Yes
LA19/12W/940/D-33	70994	1100	12W	120V	4000K	90	230°	E26	4.4"	75W	Yes	Yes	Yes	Yes
LA19/12W/950/D-33	70996	1100	12W	120V	5000K	90	230°	E26	4.4"	75W	Yes	Yes	Yes	---
A21														
LA21/16W/927/D-33	70998	1600	16W	120V	2700K	90	230°	E26	5.15"	100W	Yes	Yes	Yes	Yes
LA21/16W/930/D-33	70999	1600	16W	120V	3000K	90	230°	E26	5.15"	100W	Yes	Yes	Yes	Yes
LA21/16W/940/D-33	71000	1600	16W	120V	4000K	90	230°	E26	5.15"	100W	Yes	Yes	Yes	Yes
LA21/16W/950/D-33	71001	1600	16W	120V	5000K	90	230°	E26	5.15"	100W	Yes	Yes	Yes	---

LED LAMPS

GENERAL PURPOSE

A-SHAPE - COMMERCIAL

- High efficacy, 102 lumens per watt (LPW)
- 25,000 hours lifetime (L70)
- Ambient operating temperature: -4°F to 113°F
- Suitable for open and enclosed fixtures
- Frosted polycarbonate lens



SPECIFICATIONS

MODEL #	ORDER CODE	LUMENS	WATTAGE	INPUT VOLTAGE	CCT	CRI	BEAM ANGLE	BASE	MOL	INCANDESCENT REPLACEMENT WATTAGE
LA21/25W/30K/UNV	70714	2,550	25W	120-277V	3000K	80	220°	E26	5.5"	150W
LA21/25W/40K/UNV	70715	2,550	25W	120-277V	4000K	80	220°	E26	5.5"	150W
LA21/25W/50K/UNV	70716	2,550	25W	120-277V	5000K	80	220°	E26	5.5"	150W



GLOBE

- High efficacy, up to 90 lumens per watt (LPW)
- 25,000 hours lifetime (L70)
- Ambient operating temperature: -4°F to 104°F
- Suitable for enclosed fixtures
- Shatter-resistant plastic lens



SPECIFICATIONS

MODEL #	ORDER CODE	LUMENS	WATTAGE	INPUT VOLTAGE	CCT	CRI	BEAM ANGLE	BASE	MOL	INCANDESCENT REPLACEMENT WATTAGE	DIMMABLE	ENERGY STAR	T20	T24 JA8
PERFORMANCE														
LG25/4/927/D-46	73393	360	4W	120V	2700K	90	170°	E26	4.3"	40W	Yes	Yes	Yes	Yes
LG25/4/930/D-46	73394	360	4W	120V	3000K	90	170°	E26	4.3"	40W	Yes	Yes	Yes	Yes
LG25/4/940/D-46	73395	360	4W	120V	4000K	90	170°	E26	4.3"	40W	Yes	Yes	Yes	Yes
ECONOMY														
LG25/5W/830/ECO/D	70718	360	4.6W	120V	3000K	80	230°	E26	4.4"	40W	Yes	---	---	---

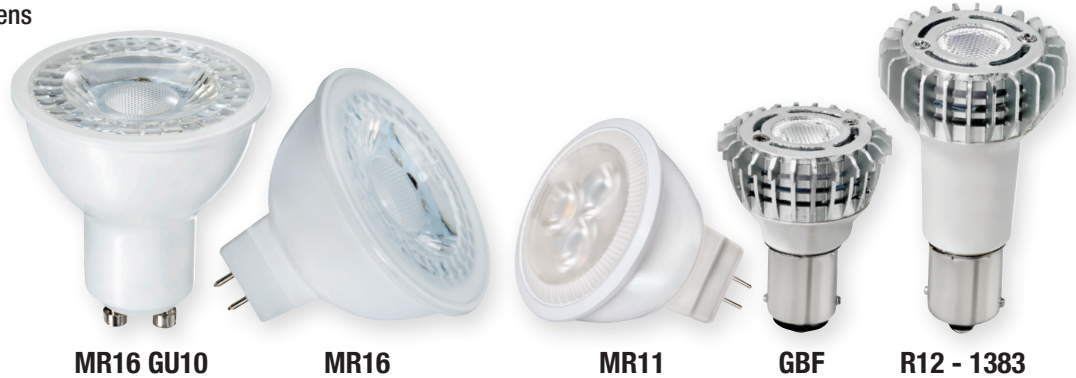


LED LAMPS

GENERAL PURPOSE

MINI-REFLECTOR (MR)

- High efficacy, up to 82 lumens per watt (LPW)
- 25,000 hours lifetime (L70)
- Ambient operating temperature: -4°F to 104°F
- Suitable for enclosed fixtures on select models*
- Shatter-resistant plastic lens



SPECIFICATIONS

MODEL #	ORDER CODE	LUMENS	WATTAGE	INPUT VOLTAGE	CCT	CRI	BEAM ANGLE	BASE	MOL	HALOGEN REPLACEMENT WATTAGE	DIMMABLE	ENERGY STAR	T20	T24 JA8
R12 (1483)														
L1383/3/830/NFL-33	79630	120	3W	12V	3000K	80	30°	BA15s	2.6"	20W	---	---	---	---
GBF														
LGBF/WW/3/FL-33	79562	115	3W	12V	3000K	80	30°	BA15d	1.8"	20W	---	---	---	---
MR11														
LM11/3/830/NFL-46*	77173	210	3W	12V	3000K	80	25°	GU4	1.5"	20W	---	---	Yes	---
LM11/3/850/NFL-46*	77175	210	3W	12V	5000K	80	25°	GU4	1.5"	20W	---	---	Yes	---
MR16														
LM16SP-7W-930-D*	73481†	500	6.5W	12V	3000K	93	15°	GU5.3	1.8"	50W	---	---	Yes	Yes
LM16SP-7W-940-D*	73482†	500	6.5W	12V	4000K	93	15°	GU5.3	1.8"	50W	---	---	Yes	Yes
LM16SP-7W-950-D*	73483†	500	6.5W	12V	5000K	93	15°	GU5.3	1.8"	50W	---	---	Yes	---
LM16FL-7W-930-D*	73478†	500	6.5W	12V	3000K	93	35°	GU5.3	1.8"	50W	---	---	Yes	Yes
LM16FL-7W-940-D*	73479†	500	6.5W	12V	4000K	93	35°	GU5.3	1.8"	50W	---	---	Yes	Yes
LM16FL-7W-950-D*	73480†	500	6.5W	12V	5000K	93	35°	GU5.3	1.8"	50W	---	---	Yes	---
MR16 GU10														
LGU10/7/830/D/G7*	79421	500	6.5W	120V	3000K	80	40°	GU10	2.1"	60W	Yes	Yes	---	---
LGU10/7/840/D/G7*	79422	500	6.5W	120V	4000K	80	40°	GU10	2.1"	60W	Yes	Yes	---	---
LGU10/7/850/D/G7*	79423	500	6.5W	120V	5000K	80	40°	GU10	2.1"	60W	Yes	Yes	---	---
MR16 GU10 PERFORMANCE														
LGU10/5/930/D/G7*	79418	450	5.5W	120V	3000K	90	40°	GU10	2.1"	50W	Yes	Yes	Yes	---
LGU10/5/940/D/G7*	79419	450	5.5W	120V	4000K	90	40°	GU10	2.1"	50W	Yes	Yes	Yes	---
LGU10/5/950/D/G7*	79420	450	5.5W	120V	5000K	90	40°	GU10	2.1"	50W	Yes	Yes	Yes	---

*Not cETLus Intertek listed

GENERAL PURPOSE

ANTIQUE FILAMENT

- High efficacy, up to 100 lumens per watt (LPW)
- Up to 15,000 hours lifetime (L70)
- Ambient operating temperature: -4°F to 104°F
- Suitable for enclosed fixtures



SPECIFICATIONS

MODEL #	ORDER CODE	LUMENS	WATTAGE	INPUT VOLTAGE	CCT	CRI	BEAM ANGLE	BASE	MOL	INCANDESCENT REPLACEMENT WATTAGE	DIMMABLE	T20
AMBER & CLEAR GLASS LENS												
LS19/5/822/ANTQ-61	79308	400	5.5W	120V	2200K	80	300°	E26	5.5"	40W	Yes	---
LA19-8W-822-ANTQ	73287	650	8W	120V	2200K	80	280°	E26	4.3"	60W	Yes	---
LA19-8W-827-ANTQ	73289	800	8W	120V	2700K	80	280°	E26	4.3"	60W	Yes	---
CLEAR GLASS LENS - FLAME TIP												
LCFC/5/927/ANTQ-61	71141	500	5.5W	120V	2700K	90	300°	E12	3.9"	60W	Yes	Yes
LCFC/5/930/ANTQ-61	71142	500	5.5W	120V	3000K	90	300°	E12	3.9"	60W	Yes	Yes
CLEAR GLASS LENS - BLUNT TIP												
LCTC/5/927/ANTQ-61	71139	500	5.5W	120V	2700K	90	300°	E12	3.8"	60W	Yes	Yes
LCTC/5/930/ANTQ-61	71140	500	5.5W	120V	3000K	90	300°	E12	3.8"	60W	Yes	Yes

LED LAMPS

GENERAL PURPOSE

DECORATIVE CANDELABRA

- High efficacy, up to 77 lumens per watt (LPW)
- Up to 20,000 hours lifetime (L70)
- Ambient operating temperature: -4°F to 104°F
- Suitable for enclosed fixtures on select models*
- Shatter-resistant plastic lens
- E26 adapter included on select models**



E26 Base

E12 Base



SPECIFICATIONS

MODEL #	ORDER CODE	LUMENS	WATTAGE	INPUT VOLTAGE	CCT	CRI	BEAM ANGLE	BASE	MOL	INCANDESCENT REPLACEMENT WATTAGE	DIMMABLE
LETTC/3/830/D-46*	79989	160	2.8W	120V	3000K	80	270°	E26	3.8"	25W	Yes
LCTC/3/830/D-46*	79981	160	2.8W	120V	3000K	80	270°	E12	3.8"	25W	Yes
LCTC-5W-827-D*	73484	350	5W	120V	2700K	80	250°	E12**	3.74"	40W	Yes
LCTC-5W-830-D*	73485	350	5W	120V	3000K	80	250°	E12**	3.74"	40W	Yes
LCTC-5W-840-D*	73486	350	5W	120V	4000K	80	250°	E12**	3.74"	40W	Yes
LCTC/7/827/D-46*	79346	500	6.5W	120V	2700K	80	270°	E12**	4.5"	60W	Yes
LCTC/7/830/D-46*	79348	500	6.5W	120V	3000K	80	270°	E12**	4.5"	60W	Yes

GENERAL PURPOSE

PAR - PERFORMANCE

- High efficacy, up to 86 lumens per watt (LPW)
- 25,000 hours lifetime (L70)
- Ambient operating temperature: -4°F to 113°F
- White thermoplastic housing
- Shatter-resistant prismatic lens
- PAR16 and PAR20 are suitable for enclosed fixtures



SPECIFICATIONS

MODEL #	ORDER CODE	LUMENS	WATTAGE	INPUT VOLTAGE	CCT	CRI	BEAM ANGLE	BASE	MO L	HALOGEN REPLACEMENT WATTAGE	DIMMABLE	ENERGY STAR	T20	T24 JA8
PAR16														
LP16/6/27K/D-46	79676	500	6.5W	120V	2700K	80	40°	E26	2.8"	60W	Yes	---	---	---
LP16/6/30K/D-46	79677	500	6.5W	120V	3000K	80	40°	E26	2.8"	60W	Yes	Yes	---	---
LP16/6/40K/D-46	79678	500	6.5W	120V	4000K	80	40°	E26	2.8"	60W	Yes	---	---	---
LP16/6/50K/D-46	79679	500	6.5W	120V	5000K	80	40°	E26	2.8"	60W	Yes	---	---	---
PAR20														
LP20/7/927/NF/D-46	71113	540	6.5W	120V	2700K	90	25°	E26	3.23"	50W	Yes	Yes	Yes	Yes
LP20/7/930/NF/D-46	71114	540	6.5W	120V	3000K	90	25°	E26	3.23"	50W	Yes	Yes	Yes	Yes
LP20/7/940/NF/D-46	71115	540	6.5W	120V	4000K	90	25°	E26	3.23"	50W	Yes	Yes	Yes	Yes
LP20/7/950/NF/D-46	71116	540	6.5W	120V	5000K	90	25°	E26	3.23"	50W	Yes	Yes	Yes	---
PAR30														
LP30/10/927/FL/D	71117	850	10W	120V	2700K	90	40°	E26	3.62"	75W	Yes	Yes	Yes	Yes
LP30/10/930/FL/D	71118	850	10W	120V	3000K	90	40°	E26	3.62"	75W	Yes	Yes	Yes	Yes
LP30/10/940/FL/D	71119	850	10W	120V	4000K	90	40°	E26	3.62"	75W	Yes	Yes	Yes	Yes
LP30/10/950/FL/D	71120	850	10W	120V	5000K	90	40°	E26	3.62"	75W	Yes	Yes	Yes	---
PAR30 LONG NECK														
LP30L/10/927/FL/D	71121	850	10W	120V	2700K	90	40°	E26	4.57"	75W	Yes	Yes	Yes	Yes
LP30L/10/930/FL/D	71122	850	10W	120V	3000K	90	40°	E26	4.57"	75W	Yes	Yes	Yes	Yes
LP30L/10/940/FL/D	71123	850	10W	120V	4000K	90	40°	E26	4.57"	75W	Yes	Yes	Yes	Yes
LP30L/10/950/FL/D	71124	850	10W	120V	5000K	90	40°	E26	4.57"	75W	Yes	Yes	Yes	---
PAR38														
LP38/14/927/FL/D	71126	1,200	14W	120V	2700K	90	40°	E26	5.16"	100W	Yes	Yes	Yes	Yes
LP38/14/930/FL/D	71127	1,200	14W	120V	3000K	90	40°	E26	5.16"	100W	Yes	Yes	Yes	Yes
LP38/14/940/FL/D	71128	1,200	14W	120V	4000K	90	40°	E26	5.16"	100W	Yes	Yes	Yes	Yes
LP38/14/950/FL/D	71129	1,200	14W	120V	5000K	90	40°	E26	5.16"	100W	Yes	Yes	Yes	---

LED LAMPS

GENERAL PURPOSE

PAR - COMMERCIAL

- High efficacy, up to 93 lumens per watt (LPW)
- 50,000 hours lifetime (L70)
- Ambient operating temperature: -4°F to 104°F
- Suitable for enclosed fixtures
- Universal operating position



SPECIFICATIONS

MODEL #	ORDER CODE	LUMENS	WATTAGE	INPUT VOLTAGE	CCT	CRI	BEAM ANGLE	BASE	MOL	HALOGEN REPLACEMENT WATTAGE	DIMMABLE	T24 JA8
PAR38												
LP38-29W-930-FLUNV	73412	2,700	29W	120-277V	3000K	90	40°	E26	5.15"	250W	Yes	Yes
LP38-29W-930-NFLUNV	73405	2,700	29W	120-277V	3000K	90	25°	E26	5.15"	250W	Yes	Yes
LP38-29W-940-FLUNV	73415	2,700	29W	120-277V	4000K	90	40°	E26	5.15"	250W	Yes	Yes
LP38-29W-940-NFLUNV	73406	2,700	29W	120-277V	4000K	90	25°	E26	5.15"	250W	Yes	Yes
LP38-29W-950-FLUNV	73416	2,700	29W	120-277V	5000K	90	40°	E26	5.15"	250W	Yes	---
LP38-29W-950-NFLUNV	73411	2,700	29W	120-277V	5000K	90	25°	E26	5.15"	250W	Yes	---

LED LAMPS

GENERAL PURPOSE

REFLECTOR (R & BR)

- High efficacy, up to 82 lumens per watt (LPW)
- 25,000 hours lifetime (L70)
- Ambient operating temperature: -4°F to 104°F
- Suitable for enclosed fixtures on select models*
- Shatter-resistant plastic lens



R20

BR30

BR40

SPECIFICATIONS

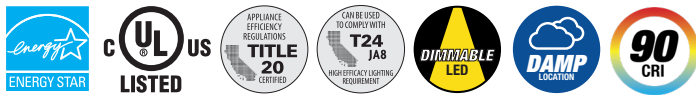
MODEL #	ORDER CODE	LUMENS	WATTAGE	INPUT VOLTAGE	CCT	CRI	BEAM ANGLE	BASE	MOL	INCANDESCENT REPLACEMENT WATTAGE	DIMMABLE	ENERGY STAR
R20												
LR20/6/827/D-46*	73425	525	6.5W	120V	2700K	80	107°	E26	3.9"	50W	Yes	Yes
LR20/6/830/D-46*	73426	525	6.5W	120V	3000K	80	107°	E26	3.9"	50W	Yes	Yes
LR20/6/840/D-46*	73427	525	6.5W	120V	4000K	80	107°	E26	3.9"	50W	Yes	Yes
LR20/6/850/D-46*	73428	525	6.5W	120V	5000K	80	107°	E26	3.9"	50W	Yes	Yes
BR30												
LBR30-8W-827-D	74437	650	8W	120V	2700K	80	105°	E26	5.16"	65W	Yes	Yes
LBR30-8W-830-D	74438	650	8W	120V	3000K	80	105°	E26	5.16"	65W	Yes	Yes
LBR30-8W-840-D	74439	650	8W	120V	4000K	80	105°	E26	5.16"	65W	Yes	Yes
LBR30-8W-850-D	74440	650	8W	120V	5000K	80	105°	E26	5.16"	65W	Yes	Yes
BR40												
LBR40/16/827/D-46	73407	1,200	16.5W	120V	2700K	80	103°	E26	6.5"	85W	Yes	Yes
LBR40/16/830/D-46	73408	1,200	16.5W	120V	3000K	80	103°	E26	6.5"	85W	Yes	Yes
LBR40/16/840/D-46	73409	1,200	16.5W	120V	4000K	80	103°	E26	6.5"	85W	Yes	Yes
LBR40/16/850/D-46	73410	1,200	16.5W	120V	5000K	80	103°	E26	6.5"	85W	Yes	Yes

LED LAMPS

GENERAL PURPOSE

REFLECTOR (R & BR) - PERFORMANCE SERIES

- High efficacy, up to 87 lumens per watt (LPW)
- 25,000 hours lifetime (L70)
- Ambient operating temperature: -4°F to 113°F
- Shatter-resistant plastic lens



SPECIFICATIONS

MODEL #	ORDER CODE	LUMENS	WATTAGE	INPUT VOLTAGE	CCT	CRI	BEAM ANGLE	BASE	MOL	INCANDESCENT REPLACEMENT WATTAGE	DIMMABLE	ENERGY STAR	T20	T24 JAB
R20														
LR20/6/927/D-46	73325	525	6W	120V	2700K	90	107°	E26	3.9"	50W	Yes	Yes	Yes	Yes
LR20/6/930/D-46	73326	525	6W	120V	3000K	90	107°	E26	3.9"	50W	Yes	Yes	Yes	Yes
LR20/6/940/D-46	73327	525	6W	120V	4000K	90	107°	E26	3.9"	50W	Yes	Yes	Yes	Yes
LR20/6/950/D-46	73328	525	6W	120V	5000K	90	107°	E26	3.9"	50W	Yes	Yes	Yes	---
BR30														
LBR30/8/927/D-46	73336	650	8W	120V	2700K	90	105°	E26	5.2"	65W	Yes	Yes	Yes	Yes
LBR30/8/930/D-46	73337	650	8W	120V	3000K	90	105°	E26	5.2"	65W	Yes	Yes	Yes	Yes
LBR30/8/940/D-46	73338	650	8W	120V	4000K	90	105°	E26	5.2"	65W	Yes	Yes	Yes	Yes
LBR30/8/950/D-46	73339	650	8W	120V	5000K	90	105°	E26	5.2"	65W	Yes	Yes	Yes	---
BR40														
LBR40/13/927/D-46	73341	1,075	13W	120V	2700K	90	103°	E26	6.5"	85W	Yes	Yes	Yes	Yes
LBR40/13/930/D-46	73342	1,075	13W	120V	3000K	90	103°	E26	6.5"	85W	Yes	Yes	Yes	Yes
LBR40/13/940/D-46	73343	1,075	13W	120V	4000K	90	103°	E26	6.5"	85W	Yes	Yes	Yes	Yes
LBR40/13/950/D-46	73344	1,075	13W	120V	5000K	90	103°	E26	6.5"	85W	Yes	Yes	Yes	---

LED LAMPS

LED LAMPS PLUG BASE

CFL REPLACEMENT

PLT Retrofit - Ballast Bypass - CCT Selectable
PLT Retrofit - Ballast Compatible - CCT Selectable
PLT Retrofit



PLUG BASE

CFL REPLACEMENT

PLT RETROFIT - BALLAST BYPASS - CCT SELECTABLE

- High efficacy, up to 131 lumens per watt (LPW)
- 50,000 hours lifetime (L70)
- Ambient operating temperature: - 4F° to 113F°
- Suitable for enclosed fixtures
- Type B, BYPASS ballast, Connect direct to line voltage

3 CCT SELECT



VERTICAL MOUNT



HORIZONTAL MOUNT

SPECIFICATIONS

MODEL #	ORDER CODE	LUMENS	WATTAGE	INPUT VOLTAGE	CCT	CRI	BEAM ANGLE	BASE	MOL	MOD	CFL REPLACEMENT WATTAGE
HORIZONTAL											
LPLTB-8W-CTSW-H	73656	950 975 1,000	8W	120-277V	2700K 3000K 3500K	83	120°	2-pin G24d rotatable	5.9"	1.6"	13W 18W 26W
LPLTB-8W-CTSC-H	73657	1,000 1,050 1,050	8W	120-277V	3500K 4000K 5000K	83	120°	2-pin G24d rotatable	5.9"	1.6"	13W 18W 26W
VERTICAL											
LPLTB-8W-CTSW-V	73658	950 975 1,000	8W	120-277V	2700K 3000K 3500K	83	120°	2-pin G24d	4.6"	2.1"	13W 18W 26W
LPLTB-8W-CTSC-V	73659	1,000 1,050 1,050	8W	120-277V	3500K 4000K 5000K	83	120°	2-pin G24d	4.6"	2.1"	13W 18W 26W

LED LAMPS

PLUG BASE CFL REPLACEMENT

PLT RETROFIT - BALLAST COMPATIBLE - CCT SELECTABLE

- High efficacy, up to 116 lumens per watt (LPW)
- 50,000 hours lifetime (L70)
- Ambient operating temperature: - 4F° to 113F°
- Suitable for enclosed fixtures
- UL type A, compatible with electronic ballasts

3 CCT SELECT



VERTICAL
MOUNT



HORIZONTAL
MOUNT

SPECIFICATIONS

MODEL #	ORDER CODE	LUMENS	WATTAGE	INPUT VOLTAGE	CCT	CRI	BEAM ANGLE	BASE	MOL	MOD	CFL REPLACEMENT WATTAGE	DLC
HORIZONTAL												
LPLTA-9W-CTSW-H	73660	1,000 1,025 1,050	9W	Ballast Dependent	2700K 3000K 3500K	83	120°	4-pin G24Q rotatable	5.9"	1.6"	13W 18W 26W	Standard
LPLTA-9W-CTSC-H	73661	1,050 1,100 1,100	9W	Ballast Dependent	3500K 4000K 5000K	83	120°	4-pin G24Q rotatable	5.9"	1.6"	13W 18W 26W	Standard
VERTICAL												
LPLTA-9W-CTSW-V	73662	1,000 1,025 1,050	9W	Ballast Dependent	2700K 3000K 3500K	83	120°	4-pin G24Q	4.6"	2.1"	13W 18W 26W	Standard
LPLTA-9W-CTSC-V	73663	1,050 1,100 1,100	9W	Ballast Dependent	3500K 4000K 5000K	83	120°	4-pin G24Q	4.6"	2.1"	13W 18W 26W	Standard

LED LAMPS

PLUG BASE

CFL REPLACEMENT

PLL RETROFIT

- High efficacy, up to 147 lumens per watt (LPW)
- 50,000 hours lifetime (L70)
- Ambient operating temperature: - 4F° to 113F°
- Suitable for enclosed fixtures
- Frosted glass tube with plastic base construction



SPECIFICATIONS

MODEL #	ORDER CODE	LUMENS	WATTAGE	INPUT VOLTAGE	CCT	CRI	BEAM ANGLE	BASE	MOL	MOD	FLUORESCENT REPLACEMENT WATTAGE	OPERATING POSITION	DLC
BALLAST BYPASS													
LPLLB/23/835-39	70702	2,800	23W	120-277V	3500K	80	210°	2G11	22"	1.5"	40W	Horizontal	Standard
LPLLB/23/840-39	70703	2,800	23W	120-277V	4000K	80	210°	2G11	22"	1.5"	40W	Horizontal	Standard
BALLAST COMPATIBLE													
LPLLE/17/835-39	70712	2,350	17W	120-277V	3500K	80	140°	2G11	22"	1.5"	40W	Horizontal	Standard
LPLLE/17/840-39	70713	2,500	17W	120-277V	4000K	80	140°	2G11	22"	1.5"	40W	Horizontal	Standard

LED LAMPS

LED LAMPS LINEAR TUBES

T8-Ballast Bypass - CCT Selectable

T8-Ballast Bypass - High Efficiency

T8-Ballast Bypass

T8-Ballast Bypass - Clear

T8-Ballast Bypass - Emergency Battery Backup

T8-Ballast Compatible

T8 - Dual Mode

T8 - U-Bend

T5-Ballast Bypass/Ballast Compatible



LINEAR TUBES

T8 BALLAST BYPASS - CCT SELECTABLE

- Choose from 5 color temperatures at installation with CCT selectable switch
- High efficacy, up to 129 lumens per watt (LPW)
- 50,000 hours lifetime (L70)
- Ambient operating temperature: -4°F to 113°F
- Suitable for enclosed fixtures
- Frosted glass tube construction with PET shatter protection
- UL type B, ballast bypass models utilize single & double end wiring connection



SPECIFICATIONS

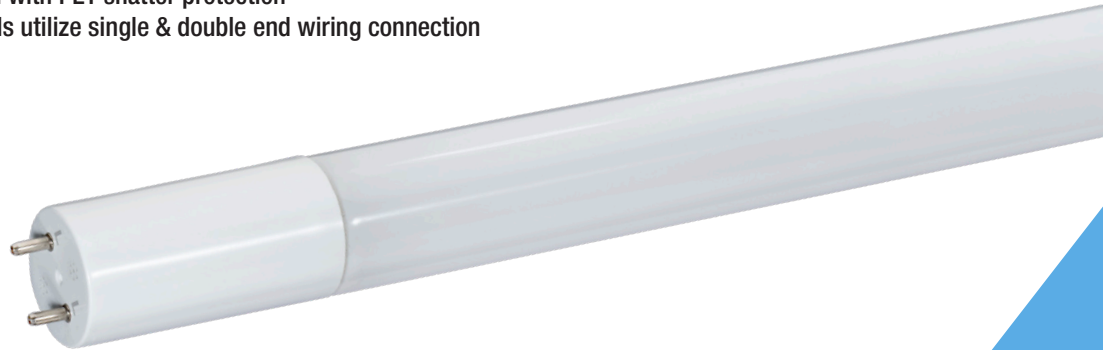
MODEL #	ORDER CODE	LUMENS	WATTAGE	INPUT VOLTAGE	CCT	CRI	BEAM ANGLE	BASE	MOL	FLUORESCENT REPLACEMENT WATTAGE	DLC
L2T8B-9-CS-GPSDE	75782	1,150	9W	120-277V	Selectable	80	170°	G13	23.5"	17W T8	Standard
L3T8B-12-CS-GPSDE	75783	1,450	12W	120-277V	Selectable	80	170°	G13	35.7"	25W T8	Standard
L4T8B-14-CS-GPSDE	75784	1,800	14W	120-277V	Selectable	80	170°	G13	47.7"	32W T8	Standard
L4T8B-17-CS-GPSDE	75785	2,200	17W	120-277V	Selectable	80	170°	G13	47.7"	32W T8	Standard

LED LAMPS

LINEAR TUBES

T8 BALLAST BYPASS - HIGH EFFICACY

- Superior performance with up 162 lumens per watt (LPW)
- 50,000 hours lifetime (L70)
- Ambient operating temperature: -4°F to 113°F
- Suitable for enclosed fixtures
- Frosted glass tube construction with PET shatter protection
- UL type B, ballast bypass models utilize single & double end wiring connection



SPECIFICATIONS

MODEL #	ORDER CODE	LUMENS	WATTAGE	INPUT VOLTAGE	CCT	CRI	BEAM ANGLE	BASE	MOL	FLUORESCENT REPLACEMENT WATTAGE	DLC
L4T8B-10-35K-GPSDE	75778	1,700	10.5W	120-277V	3500K	80	170°	G13	47.7"	32W T8	Standard
L4T8B-10-40K-GPSDE	75779	1,700	10.5W	120-277V	4000K	80	170°	G13	47.7"	32W T8	Standard
L4T8B-10-50K-GPSDE	75780	1,700	10.5W	120-277V	5000K	80	170°	G13	47.7"	32W T8	Standard
L4T8B-10-65K-GPSDE	75781	1,700	10.5W	120-277V	6500K	80	170°	G13	47.7"	32W T8	---

LED LAMPS

LINEAR TUBES

T8 BALLAST BYPASS

- High efficacy, up to 137 lumens per watt (LPW)
- 50,000 hours lifetime (L70)
- Ambient operating temperature: -4°F to 113°F
- Suitable for enclosed fixtures
- Frosted glass tube construction with PET shatter protection, NSF certification on some models*
- UL type B, ballast bypass



SPECIFICATIONS

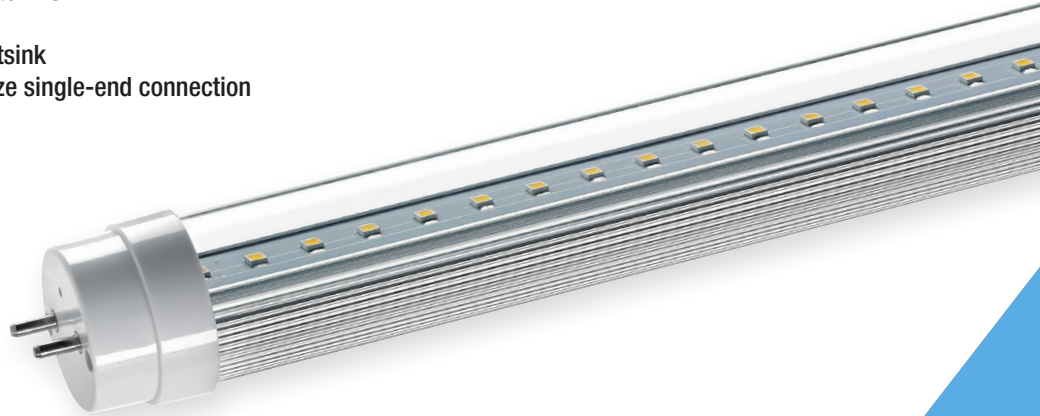
MODEL #	ORDER CODE	LUMENS	WATTAGE	INPUT VOLTAGE	CCT	CRI	BEAM ANGLE	BASE	MOL	FLUORESCENT REPLACEMENT WATTAGE	DLC
2' END-TO-END CONNECTION											
L2T8B/835/9F/DE-C*	79429	1,100	9W	120-277V	3500K	80	160°	G13	24"	17W T8	Standard
L2T8B/840/9F/DE-C*	79430	1,150	9W	120-277V	4000K	80	160°	G13	24"	17W T8	Standard
L2T8B/850/9F/DE-C*	79431	1,150	9W	120-277V	5000K	80	160°	G13	24"	17W T8	Standard
L2T8B/865/9F/DE-C*	79432	1,150	9W	120-277V	6500K	80	160°	G13	24"	17W T8	---
4' ECONOMY, END-TO-END CONNECTION											
L4T8B/840/14F/DE-C*	79434	1,800	14W	120-277V	4000K	80	160°	G13	48"	32W T8	Standard
L4T8B/850/14F/DE*	79435	1,800	14W	120-277V	5000K	80	160°	G13	48"	32W T8	Standard
4' DUAL END (SINGLE AND END-TO-END) CONNECTION											
L4T8B/35K/14F/DE*	70242	1,700	14W	120-277V	3500K	80	160°	G13	48"	32W T8	Standard
L4T8B/40K/14F/DE*	70243	1,800	14W	120-277V	4000K	80	160°	G13	48"	32W T8	Standard
L4T8B/50K/14F/DE*	70244	1,800	14W	120-277V	5000K	80	160°	G13	48"	32W T8	Standard
L4T8B/65K/14F/DE*	70245	1,800	14W	120-277V	6500K	80	160°	G13	48"	32W T8	---
L4T8B/40K/17F/DE*	70247	2,200	17W	120-277V	4000K	80	160°	G13	48"	32W T8	Standard
L4T8B/50K/17F/DE*	70248	2,200	17W	120-277V	5000K	80	160°	G13	48"	32W T8	Standard
8' END-TO-END CONNECTION											
L8T8B/840/42F/R17D	74538	5,400	42W	120-277V	4000K	80	160°	R17D	96"	86W T8/110W T12	---
L8T8B/850/42F/R17D	74539	5,500	42W	120-277V	5000K	80	160°	R17D	96"	86W T8/110W T12	---
L8T8B/865/42F/R17D	74540	5,500	42W	120-277V	6500K	80	160°	R17D	96"	86W T8/110W T12	---
L8T8B-40W-835-FA8*	73450	5,300	40W	120-277V	3500K	82	210°	FA8	96"	59W T8	Standard
L8T8B-40W-840-FA8*	73451	5,500	40W	120-277V	4000K	82	210°	FA8	96"	59W T8	Standard
L8T8B-40W-850-FA8*	73452	5,500	40W	120-277V	5000K	82	210°	FA8	96"	59W T8	Standard

LED LAMPS

LINEAR TUBES

T8 BALLAST BYPASS - CLEAR

- High efficacy, up to 122 lumens per watt (LPW)
- 50,000 hours lifetime (L70)
- Ambient operating temperature: -4°F to 113°F
- Suitable for enclosed fixtures
- Clear plastic tube with aluminum heatsink
- UL type B, ballast bypass models utilize single-end connection



SPECIFICATIONS

MODEL #	ORDER CODE	LUMENS	WATTAGE	INPUT VOLTAGE	CCT	CRI	BEAM ANGLE	BASE	MOL	FLUORESCENT REPLACEMENT WATTAGE
2'										
L2T8B/835/10C/SE	71036	1,160	10W	120-277V	3500K	83	120°	G13	24"	17W T8
L2T8B/840/10C/SE	71037	1,180	10W	120-277V	4000K	83	120°	G13	24"	17W T8
L2T8B/850/10C/SE	71038	1,200	10W	120-277V	5000K	83	120°	G13	24"	17W T8
4'										
L4T8B/835/18C/SE	71041	2,088	18W	120-277V	3500K	83	120°	G13	48"	32W T8
L4T8B/840/18C/SE	71042	2,124	18W	120-277V	4000K	83	120°	G13	48"	32W T8
L4T8B/850/18C/SE	71043	2,160	18W	120-277V	5000K	83	120°	G13	48"	32W T8
L4T8B/860/18C/SE	71044	2,190	18W	120-277V	6000K	83	120°	G13	48"	32W T8

LED LAMPS

LINEAR TUBES

T8 BALLAST BYPASS - EMERGENCY BATTERY BACKUP

- 500 lumens in EM mode
- Integrated battery backup provides 90 minutes of illumination during power outage
- High efficacy, up to 127 lumens per watt (LPW)
- 50,000 hours lifetime (L70)
- Ambient operating temperature: -4°F to 113°F
- Suitable for enclosed fixtures
- Polycarbonate with aluminum heat sink
- UL type B, ballast bypass models utilize single end wiring connection



SPECIFICATIONS

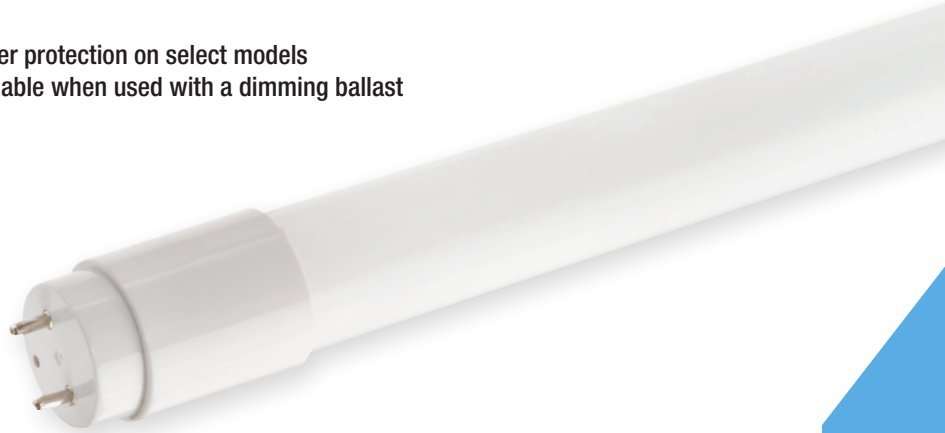
MODEL #	ORDER CODE	LUMENS	WATTAGE	INPUT VOLTAGE	CCT	CRI	BEAM ANGLE	BASE	MOL	FLUORESCENT REPLACEMENT WATTAGE	DLC
L4T8B-15-35K-PCEM	75774	1,850	15W	120-277V	3500K	82	140°	G13	47.24"	32W T8	Standard
L4T8B-15-40K-PCEM	75775	1,900	15W	120-277V	4000K	82	140°	G13	47.24"	32W T8	Standard
L4T8B-15-50K-PCEM	75776	1,900	15W	120-277V	5000K	82	140°	G13	47.24"	32W T8	Standard
L4T8B-15-65K-PCEM	75777	1,900	15W	120-277V	6500K	82	140°	G13	47.24"	32W T8	Standard

LED LAMPS

LINEAR TUBES

T8 BALLAST COMPATIBLE

- High efficacy, up to 156 lumens per watt (LPW)
- 50,000 hours lifetime (L70)
- Ambient operating temperature: -4°F to 113°F
- Suitable for enclosed fixtures
- Frosted glass tube construction with PET shatter protection on select models
- UL type A, ballast compatible models are dimmable when used with a dimming ballast
- End-to-end electrical connection



SPECIFICATIONS

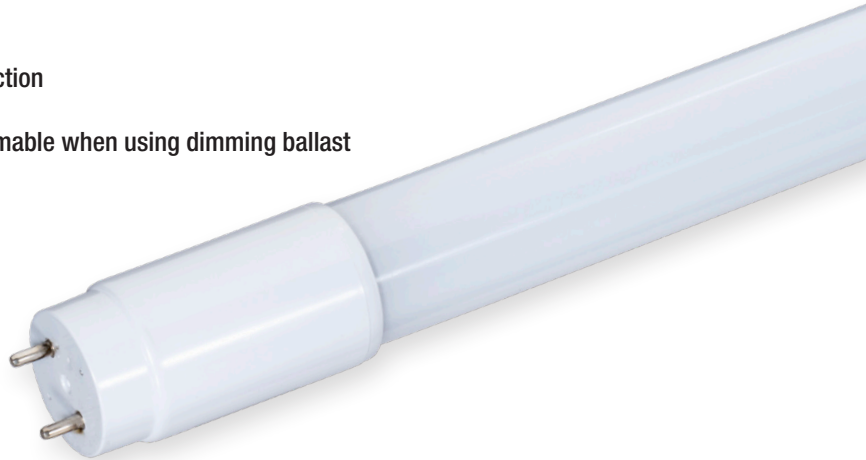
MODEL #	ORDER CODE	LUMENS	WATTAGE	INPUT VOLTAGE	CCT	CRI	BEAM ANGLE	BASE	MOL	FLUORESCENT REPLACEMENT WATTAGE	DLC
3' FROSTED GLASS CONSTRUCTION WITH PET											
L3T8E/835/14/F/G5	70678	1,700	14W	Ballast Dependent	3500K	80	160°	G13	36"	25W T8	---
4' FROSTED GLASS CONSTRUCTION WITH PET											
L4T8E/830/13/F-70	77868	1,900	13W	Ballast Dependent	3000K	80	160°	G13	48"	32W T8	Standard
L4T8E/835/13/F-70	77872	1,950	13W	Ballast Dependent	3500K	80	160°	G13	48"	32W T8	Standard
L4T8E/840/13/F-70	77874	2,000	13W	Ballast Dependent	4000K	80	160°	G13	48"	32W T8	Standard
L4T8E/850/13/F-70	77876	2,000	13W	Ballast Dependent	5000K	80	160°	G13	48"	32W T8	Standard
4' GLASS CONSTRUCTION ECONOMY											
L4T8E/835/13F/ECO	77845	1,950	13W	Ballast Dependent	3500K	80	160°	G13	48"	32W T8	Standard
L4T8E/840/13F/ECO	77846	2,000	13W	Ballast Dependent	4000K	80	160°	G13	48"	32W T8	Standard
L4T8E/850/13F/ECO	77847	2,000	13W	Ballast Dependent	5000K	80	160°	G13	48"	32W T8	Standard

LED LAMPS

LINEAR TUBES

T8 DUAL MODE

- High efficacy, up to 144 lumens per watt (LPW)
- 50,000 hours lifetime (L70)
- Ambient operating temperature: -4°F to 113°F
- Suitable for enclosed fixtures
- Frosted glass tube construction with PET shatter protection
- Single and double-end electrical connection
- UL type AB, ballast bypass and ballast compatible, dimmable when using dimming ballast



SPECIFICATIONS

MODEL #	ORDER CODE	LUMENS	WATTAGE	INPUT VOLTAGE	CCT	CRI	BEAM ANGLE	BASE	MOL	FLUORESCENT REPLACEMENT WATTAGE	DLC
2'											
L2T8D/835/10/F-70	77281	1,425	10W	120-277V	3500K	83	160°	G13	24"	17W T8	Standard
L2T8D/840/10/F-70	77282	1,450	10W	120-277V	4000K	83	160°	G13	24"	17W T8	Standard
L2T8D/850/10/F-70	77283	1,450	10W	120-277V	5000K	83	160°	G13	24"	17W T8	Standard
3'											
L3T8D/835/12/F-70	77197	1,675	12W	120-277V	3500K	83	160°	G13	36"	25W T8	Standard
L3T8D/840/12/F-70	77198	1,700	12W	120-277V	4000K	83	160°	G13	36"	25W T8	Standard
L3T8D/850/12/F-70	77199	1,700	12W	120-277V	5000K	83	160°	G13	36"	25W T8	Standard
4'											
L4T8D/835/12/F-70	77286	1,775	12.5W	120-277V	3500K	83	160°	G13	48"	32W T8	Standard
L4T8D/840/12/F-70	77287	1,800	12.5W	120-277V	4000K	83	160°	G13	48"	32W T8	Standard
L4T8D/850/12/F-70	77288	1,800	12.5W	120-277V	5000K	83	160°	G13	48"	32W T8	Standard
L4T8D/860/12/F-70	77289	1,800	12.5W	120-277V	6500K	83	160°	G13	48"	32W T8	---

LINEAR TUBES

T8 U-BEND

- High efficacy, up to 146 lumens per watt (LPW)
- 50,000 hours lifetime (L70)
- Ambient operating temperature: -4°F to 113°F
- Suitable for enclosed fixtures
- Frosted plastic construction, 6" tube spacing
- UL type A, ballast compatible models are dimmable when used with a dimming ballast
- UL type B, ballast bypass models utilize single-end connection



SPECIFICATIONS

MODEL #	ORDER CODE	LUMENS	WATTAGE	INPUT VOLTAGE	CCT	CRI	BEAM ANGLE	BASE	MOL	FLUORESCENT REPLACEMENT WATTAGE	DLC
BALLAST BYPASS											
L4T8B/U6/835/15F	74155	1,950	15.5W	120-277V	3500K	83	160°	G13	22"	32W T8/U6	Standard
L4T8B/U6/840/15F	74156	2,000	15.5W	120-277V	4000K	83	160°	G13	22"	32W T8/U6	Standard
L4T8B/U6/850/15F	74157	2,000	15.5W	120-277V	5000K	83	160°	G13	22"	32W T8/U6	Standard
BALLAST COMPATIBLE											
L4T8E/U6/835/13F	74161	1,950	13W	Ballast Dependent	3500K	83	160°	G13	22"	32W T8/U6	Standard
L4T8E/U6/840/13F	74162	2,000	13W	Ballast Dependent	4000K	83	160°	G13	22"	32W T8/U6	Standard
L4T8E/U6/850/13F	74163	2,000	13W	Ballast Dependent	5000K	83	160°	G13	22"	32W T8/U6	Standard

LED LAMPS

LINEAR TUBES

T5 BALLAST BYPASS/BALLAST COMPATIBLE

- High efficacy, up to 154 lumens per watt (LPW)
- 50,000 hours lifetime (L70)
- Ambient operating temperature: -4°F to 113°F
- Not suitable for enclosed fixtures
- Frosted glass tube construction with PET shatter protection
- UL type A, ballast compatible models are dimmable when used with a dimming ballast
- UL type B, ballast bypass models utilize single-end connection



SPECIFICATIONS

MODEL #	ORDER CODE	LUMENS	WATTAGE	INPUT VOLTAGE	CCT	CRI	BEAM ANGLE	BASE	MOL	FLUORESCENT REPLACEMENT WATTAGE	DLC
4' BALLAST BYPASS											
L4T5B/835/25/F/SE	70804	3,200	25W	120-277V	3500K	83	160°	G5	46"	54W T5/HO	Standard
L4T5B/840/25/F/SE	70805	3,300	25W	120-277V	4000K	83	160°	G5	46"	54W T5/HO	Standard
L4T5B/850/25/F/SE	70806	3,400	25W	120-277V	5000K	83	160°	G5	46"	54W T5/HO	Standard
2' BALLAST COMPATIBLE											
L2T5E/835/9/F-70	70785	1,200	9W	Ballast Dependent	3500K	83	160°	G5	22"	24W T5/HO	---
L2T5E/840/9/F-70	70786	1,250	9W	Ballast Dependent	4000K	83	160°	G5	22"	24W T5/HO	---
L2T5E/850/9/F-70	70787	1,300	9W	Ballast Dependent	5000K	83	160°	G5	22"	24W T5/HO	---
4' BALLAST COMPATIBLE											
L4T5E/835/13/F-70	70797	1,950	13W	Ballast Dependent	3500K	83	160°	G5	46"	28W T5/HE	Standard
L4T5E/840/13/F-70	70798	2,000	13W	Ballast Dependent	4000K	83	160°	G5	46"	28W T5/HE	Standard
L4T5E/850/13/F-70	70799	2,000	13W	Ballast Dependent	5000K	83	160°	G5	46"	28W T5/HE	Standard
L4T5E/835/25/F-70	70789	3,500	25.5W	Ballast Dependent	3500K	83	160°	G5	46"	54W T5/HO	Standard
L4T5E/840/25/F-70	70790	3,600	25.5W	Ballast Dependent	4000K	83	160°	G5	46"	54W T5/HO	Standard
L4T5E/850/25/F-70	70791	3,600	25.5W	Ballast Dependent	5000K	83	160°	G5	46"	54W T5/HO	Standard

LED LAMPS

LED LAMPS HID REPLACEMENT

High Bay Lighting

Post Top Lighting

Wall Pack & Area Lighting - Power & CCT Selectable

Wall Pack & Area Lighting - Fold-Out Array



HID REPLACEMENT

HIGH BAY LIGHTING

- High efficacy, up to 150 lumens per watt (LPW)
- 50,000 hours lifetime (L70)
- Ambient operating temperature: -20°F to 140°F
- Suitable for enclosed fixtures: -20°F to 113°F
- UL type B, ballast bypass operation
- Optional motion sensor allows for dimming and easy plug and play capabilities



SOLD SEPARATELY



SPECIFICATIONS

MODEL #	ORDER CODE	LUMENS	WATTAGE	INPUT VOLTAGE	CCT	CRI	BEAM ANGLE	BASE	MOL	MOD	HID REPLACEMENT WATTAGE	OPERATING POSITION	DLC
LHB80W-850-EX39	73489	12,000	80W	120-277V	5000K	85	150°	EX39	9.25"	7.48"	250W	Vertical/Base Up	Standard
LHB115W-840-EX39	73492	16,675	115W	120-277V	4000K	85	150°	EX39	9.57"	8.46"	400W	Vertical/Base Up	Standard
LHB115W-850-EX39	73491	17,250	115W	120-277V	5000K	85	150°	EX39	9.57"	8.46"	400W	Vertical/Base Up	Standard
ACCESSORIES (SOLD SEPARATELY)													
MODEL #	ORDER CODE	DESCRIPTION											
LHB-MMS	73493	Plug & Play Motion Sensor											

HID REPLACEMENT

POST TOP LIGHTING

- Power Selectable option available: choose 3 power levels in a single fixture
- High efficacy, up to 150 lumens per watt (LPW)
- 50,000 hours lifetime (L70)
- Ambient operating temperature: -40°F to 140°F
- Suitable for enclosed fixtures
- UL type B, ballast bypass operation



**POWER
SELECT**

E39
ADAPTER



MICROWAVE
MOTION SENSOR



SPECIFICATIONS

MODEL #	ORDER CODE	LUMENS	WATTAGE	INPUT VOLTAGE	CCT	CRI	BEAM ANGLE	BASE	MOL	MOD	HID REPLACEMENT WATTAGE	OPERATING POSITION	DLC
STANDARD													
LPT12/850-E26/G3	74342	1,800	12W	120-277V	5000K	80	360°	E26	4.92"	2.56"	50W	Universal	---
LPT18/850-E26/G3	74344	2,700	18W	120-277V	5000K	80	360°	E26	5.57"	2.56"	70W	Universal	---
POWER SELECTABLE													
LPT27W-830-E26-G4	73554	3,780	12W 18W 27W	120-277V	3000K	80	360°	E26	6.81"	2.36"	50W 70W 100W	Universal	---
LPT27W-850-E26-G4	73555	4,050	12W 18W 27W	120-277V	5000K	80	360°	E26	6.81"	2.36"	50W 70W 100W	Universal	---
LPT27W-850-E39-G4	73556	4,050	12W 18W 27W	120-277V	5000K	80	360°	E39	7.32"	2.36"	50W 70W 100W	Universal	Standard
LPT36W-850-E26-G4	73557	5,400	18W 27W 36W	120-277V	5000K	80	360°	E26	7.56"	3.45"	70W 100W 150W	Universal	---
LPT36W-850-E39-G4	73558	5,400	18W 27W 36W	120-277V	5000K	80	360°	E39	8.31"	3.45"	70W 100W 150W	Universal	Standard
LPT54W-830-E26-G4	73559	7,560	36W 45W 54W	120-277V	3000K	80	360°	E26	9.09"	3.45"	150W 175W 250W	Universal	---
LPT54W-850-E26-G4	73560	8,100	36W 45W 54W	120-277V	5000K	80	360°	E26	9.09"	3.45"	150W 175W 250W	Universal	---
LPT54W-830-E39-G4	73561	7,560	36W 45W 54W	120-277V	3000K	80	360°	E39	9.84"	3.45"	150W 175W 250W	Universal	Standard
LPT54W-850-E39-G4	73562	7,100	36W 45W 54W	120-277V	5000K	80	360°	E39	9.84"	3.45"	150W 175W 250W	Universal	Standard
LPT80W-850-E39-G4	73563	12,000	54W 63W 80W	120-277V	5000K	80	360°	E39	9.84"	5.12"	250W 275W 320W	Vertical	Standard
LPT100W-850-EX39G4	73564	15,000	63W 80W 100W	120-277V	5000K	80	360°	EX39	10.43"	5.12"	275W 320W 400W	Vertical	Standard
LPT120W-850-EX39G4	73565	18,000	80W 100W 120W	120-277V	5000K	80	360°	EX39	11.26"	5.12"	320W 400W 600W	Vertical	Standard
ACCESSORIES (SOLD SEPARATELY)													
MODEL #	ORDER CODE	DESCRIPTION											
WD-E39/E26-REDUCE	78413	E39 ADAPTER											
LPT-80W-120W-MMS	73566	MICROWAVE MOTION SENSOR FOR USE WITH 80W-120W POST TOPS											

LED LAMPS

HID REPLACEMENT

WALL PACK & AREA LIGHTING - POWER & CCT SELECTABLE

- Choose from three power levels and three color temperatures in one lamp
- High efficacy, up to 150 lumens per watt (LPW)
- 50,000 hours lifetime (L70)
- Ambient operating temperature: -20°F to 140°F
- Suitable for enclosed fixtures: -22°F to 113°F
- UL type B, ballast bypass operation



20W E26

30W E26

60W EX39



**POWER
SELECT**

**SOLD
SEPARATELY**



SPECIFICATIONS

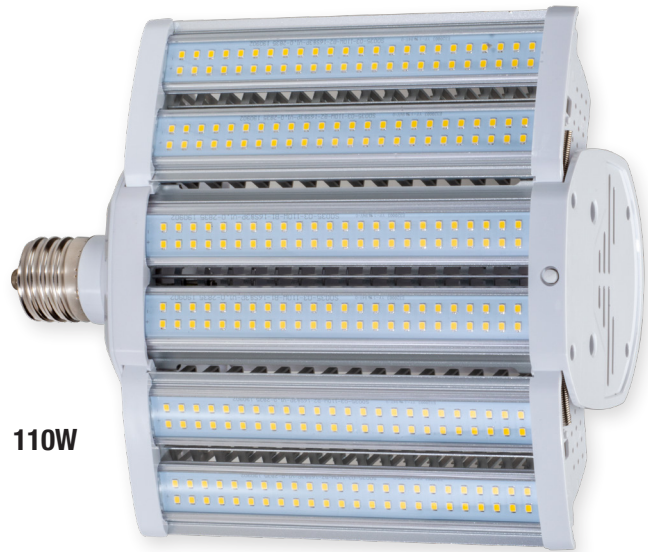
MODEL #	ORDER CODE	LUMENS	WATTAGE	INPUT VOLTAGE	CCT	CRI	BEAM ANGLE	BASE	MOL	MOD	HID REPLACEMENT WATTAGE	OPERATING POSITION	DLC
LWP-20WPCTS-E26	73511	3,000	5W 10W 20W	120-277V	Selectable	85	180°	E26	5.4"	3.6"	175W	Horizontal	---
LWP-20WPCTS-EX39	73512	3,000	5W 10W 20W	120-277V	Selectable	85	180°	EX39	5.4"	3.6"	175W	Horizontal	Standard
LWP-30WPCTS-E26	73513	4,800	10W 20W 30W	120-277V	Selectable	85	180°	E26	7"	3.6"	250W	Horizontal	---
LWP-30WPCTS-EX39	73514	4,800	10W 20W 30W	120-277V	Selectable	85	180°	EX39	7"	3.6"	250W	Horizontal	Standard
LWP-40WPCTS-EX39	73515	6,200	20W 30W 40W	120-277V	Selectable	85	180°	EX39	8.4"	3.6"	320W	Horizontal	Standard
LWP-60WPCTS-EX39	73516	9,600	20W 40W 60W	120-277V	Selectable	85	180°	EX39	10.6"	3.6"	400W	Horizontal	Standard
ACCESSORIES (SOLD SEPARATELY)													
MODEL #	ORDER CODE	DESCRIPTION											
WD-E39/E26-REDUCE	78413	E39 ADAPTER											

LED LAMPS

HID REPLACEMENT

WALL PACK & AREA LIGHTING - FOLD-OUT ARRAY

- High efficacy, up to 150 lumens per watt (LPW)
- 50,000 hours lifetime (L70)
- Ambient operating temperature: -22°F to 140°F
- Unique fold-out array maximizes light distribution
- Rotatable EX39 mogul base



SPECIFICATIONS

MODEL #	ORDER CODE	LUMENS	WATTAGE	INPUT VOLTAGE	CCT	CRI	BEAM ANGLE	BASE	MOL	MOD	HID REPLACEMENT WATTAGE	OPERATING POSITION	DLC
LARL/80/850/EX39	72731	11,200	80W	120-277V	5000K	80	160°	EX39	8.47"	4.69"	250W-320W	Horizontal	Standard
LARL/110/850/EX39	72732	16,500	110W	120-277V	5000K	80	160°	EX39	11.1"	4.69"	400W	Horizontal	Standard

LED LAMPS

LED INDOOR LUMINAIRES RECESSED DOWNLIGHTING

Modules/Trims - Performance Series - CCT Selectable

Modules/Trims - Economy Series

Modules/Trims - Color Trims

Slim Fit Canless - CCT Selectable

Slim Fit Canless - Deep Regress - CCT Selectable

Slim Fit Canless - Deep Regress - Color Trims

Housings - New Construction/Remodel

Housings - Fire Rated

Commercial Downlights



RECESSED DOWNLIGHTING

MODULES/TRIMS - PERFORMANCE SERIES - CCT SELECTABLE

- High efficacy, up to 105 lumens per watt (LPW)
- 50,000 hours lifetime (L70)
- Ambient operating temperature: - 4°F to 113°F
- White plastic trim
- Polycarbonate lens
- Compatible with most 4" and 5"/6" housings
- 5000K CCT is not compliant with Title 24 JA8 requirements



6" SMOOTH TRIM



4" BAFFLE TRIM



SPECIFICATIONS

ITEMNUMBER	ORDER CODE	LUMENS	WATTAGE	INPUT CURRENT @120V	CCT SELECTABLE	CRI	BEAM ANGLE	TRIM STYLE	HOUSING SIZE	INCANDESCENT REPLACEMENT WATTAGE	ENERGY STAR	T20	T24 JA8
ROUND- POWER & CCT SELECTABLE													
RTL6-13W-PCS-WH-S	76988	770	7.5W	150mA	27130I35I40I50K	90	100°	Smooth	6"	65W	Yes	Yes	Yes
		1,000	9.5W							75W	Yes	Yes	Yes
		1,250	13W							85W	Yes	Yes	Yes
RTL6-13W-PCS-WH-B	76989	770	7.5W	150mA	27130I35I40I50K	90	100°	Baffle	6"	65W	Yes	Yes	Yes
		1,000	9.5W							75W	Yes	Yes	Yes
		1,250	13W							85W	Yes	Yes	Yes
ROUND-CCT SELECTABLE													
RTL400WH/7W/CTS	71136	550	6.5W	85mA	27130I35I40I50K	90	100°	Smooth	4"	50W	Yes	Yes	Yes
RTL600WH/9W/CTS	71137	770	9W	110mA	27130I35I40I50K	90	100°	Smooth	6"	65W	Yes	Yes	Yes
RTL600WH/11W/CTS	71138	1,000	11W	140mA	27130I35I40I50K	90	100°	Smooth	6"	75W	Yes	Yes	Yes
RTL403WH/7W/CTS	71131	550	6.5W	85mA	27130I35I40I50K	90	100°	Baffle	4"	50W	Yes	Yes	Yes
RTL603WH/9W/CTS	71132	770	9W	110mA	27130I35I40I50K	90	100°	Baffle	6"	65W	Yes	Yes	Yes
RTL603WH/11W/CTS	71133	1,000	11W	140mA	27130I35I40I50K	90	100°	Baffle	6"	75W	Yes	Yes	Yes
SQUARE- CCT SELECTABLE													
RTL4-SQ-7W-CS-WH	76982	585	6.5W	85mA	27130I35I40I50K	90	95°	Baffle	4"	50W	Yes	Yes	Yes
RTL6-SQ-9W-CS-WH	76983	810	9W	110mA	27130I35I40I50K	90	95°	Baffle	6"	65W	Yes	Yes	Yes
RTL6-SQ-11W-CS-WH	76984	1,000	11W	140mA	27130I35I40I50K	90	95°	Baffle	6"	75W	Yes	Yes	Yes
GIMBAL-CCT SELECTABLE													
RTL4-ADJ-7W-CS-WH	76985	585	6.5W	85mA	27130I35I40I50K	90	100°	Smooth	4"	50W	Yes	Yes	Yes
RTL6-ADJ-9W-CS-WH	76986	810	9W	110mA	27130I35I40I50K	90	100°	Smooth	6"	65W	Yes	Yes	Yes
RTL6-ADJ-11W-CS-WH	76987	1,000	11W	140mA	27130I35I40I50K	90	100°	Smooth	6"	75W	Yes	Yes	Yes

LED INDOOR LUMINAIRES

RECESSED DOWNLIGHTING

MODULES/TRIMS - ECONOMY SERIES

- High efficacy, up to 104 lumens per watt (LPW)
- 50,000 hours lifetime (L70)
- Ambient operating temperature: - 4°F to 113°F
- Wet Location Listed
- Polycarbonate lens
- Compatible with most 5"/6" housings



SPECIFICATIONS

MODEL #	ORDER CODE	LU-MENS	WATTAGE	INPUT CURRENT @120V	CCT	CRI	BEAM ANGLE	TRIM STYLE	HOUSING SIZE	INCANDESCENT REPLACEMENT WATTAGE	ENERGY STAR	T20	T24 JAB
RTL4-6W-30K-WH-S	76966	550	6W	75mA	3000K	90	100°	Smooth	4"	65W	Yes	Yes	Yes
RTL4-6W-40K-WH-S	76967	550	6W	75mA	4000K	90	100°	Smooth	4"	65W	Yes	Yes	Yes
RTL6-8W-30K-WH-S	72777	730	7.5W	130mA	3000K	90	100°	Smooth	6"	65W	Yes	Yes	Yes
RTL6-8W-40K-WH-S	76969	730	7.5W	130mA	4000K	90	100°	Smooth	6"	65W	Yes	Yes	Yes
RTL6-12W-30K-WH-S	76970	1,080	12W	150mA	3000K	90	100°	Smooth	6"	75W	Yes	Yes	Yes
RTL6-12W-40K-WH-S	76971	1,080	12W	150mA	4000K	90	100°	Smooth	6"	75W	Yes	Yes	Yes
RTL6-13W-30K-WH-S	76972	1,350	13W	160mA	3000K	90	100°	Smooth	6"	100W	Yes	Yes	Yes
RTL6-13W-40K-WH-S	76973	1,350	13W	160mA	4000K	90	100°	Smooth	6"	100W	Yes	Yes	Yes
RTL433WH/10W/D-61	79586	650	10W	83mA	3000K	80	100°	Baffle	4"	65W	Yes	No	No
RTL4-6W-40K-WH-B	76975	550	6W	75mA	4000K	90	100°	Baffle	4"	65W	Yes	Yes	Yes
RTL6-8W-30K-WH-B	76976	730	7.5W	130mA	3000K	90	100°	Baffle	6"	65W	Yes	Yes	Yes
RTL6-12W-30K-WH-B	76978	1,080	12W	150mA	3000K	90	100°	Baffle	6"	75W	Yes	Yes	Yes
RTL6-8W-40K-WH-B	76977	730	7.5W	130mA	4000K	90	100°	Baffle	6"	65W	Yes	Yes	Yes
RTL6-12W-40K-WH-B	76979	1,080	12W	150mA	4000K	90	100°	Baffle	6"	75W	Yes	Yes	Yes
RTL6-13W-30K-WH-B	76980	1,350	13W	160mA	3000K	90	100°	Baffle	6"	100W	Yes	Yes	Yes
RTL6-13W-40K-WH-B	76981	1,350	13W	160mA	4000K	90	100°	Baffle	6"	100W	Yes	Yes	Yes

LED INDOOR LUMINAIRES

RECESSED DOWNLIGHTING

MODULES/TRIMS - COLOR TRIMS

- Steel construction
- Compatible with all RTL Series module/trims except for square and gimbal



BLACK BAFFLE



**BRUSHED
NICKEL BAFFLE**



BRONZE BAFFLE



BLACK SMOOTH



**BRUSHED
NICKEL SMOOTH**



BRONZE SMOOTH

SPECIFICATIONS

MODEL #	ORDER CODE	SIZE	COLOR	TRIM STYLE
RTL4-TRIM-BL-B	73681	4"	Black	Baffle
RTL4-TRIM-BN-B	73685	4"	Brushed Nickel	Baffle
RTL4-TRIM-BZ-B	73683	4"	Bronze	Baffle
RTL6-TRIM-BL-B	73687	6"	Black	Baffle
RTL6-TRIM-BN-B	73692	6"	Brushed Nickel	Baffle
RTL6-TRIM-BZ-B	73689	6"	Bronze	Baffle
RTL4-TRIM-BL-S	73680	4"	Black	Smooth
RTL4-TRIM-BN-S	73684	4"	Brushed Nickel	Smooth
RTL4-TRIM-BZ-S	73682	4"	Bronze	Smooth
RTL6-TRIM-BL-S	73686	6"	Black	Smooth
RTL6-TRIM-BN-S	73691	6"	Brushed Nickel	Smooth
RTL6-TRIM-BZ-S	73688	6"	Bronze	Smooth

LED INDOOR LUMINAIRES

RECESSED DOWNLIGHTING

SLIM FIT CANLESS - CCT SELECTABLE

- High efficacy, up to 89 lumens per watt (LPW)
- 50,000 hours lifetime (L70)
- Ambient operating temperature: - 4F° to 104°F
- Ultra-thin white aluminum die-cast construction
- Acrylic lens
- Recessed housing not required, remote J-box provides flexibility in mounting



ROUND



SQUARE



GIMBAL



FRAME-IN KIT



6' LOW VOLTAGE EXTENSION CABLE



SPECIFICATIONS

MODEL #	ORDER CODE	LUMENS	WATTAGE	INPUT VOLTAGE	CCT	CRI	BEAM ANGLE	HOUSING SIZE	INCANDESCENT REPLACEMENT WATTAGE	ENERGY STAR	T24 JA8
ROUND											
RDL3RND/8/5CTS	71084	530	8W	120V	Selectable	90	110°	3"	50W	Yes	Yes
RDL4RND/9/5CTS	70885	550	9W	120V	Selectable	90	110°	4"	60W	Yes	Yes
RDL6RND/12/5CTS	70886	850	12W	120V	Selectable	90	110°	6"	75W	---	Yes
RDL6RND/12HL/5CTS	70887	1,050	12W	120V	Selectable	90	110°	6"	100W	Yes	Yes
RDL8RND/18/5CTS	71085	1,600	18W	120V	Selectable	90	110°	8"	100W	Yes	Yes
GIMBAL											
RDL4GIM/9/5CTS-46	70888	580	9W	120V	Selectable	90	100°	4"	50W	Yes	Yes
RDL4GIM/11/5CTS	70889	770	11W	120V	Selectable	90	100°	4"	65W	Yes	Yes
RDL4GIM/15/5CTS	70890	1,000	15W	120V	Selectable	90	100°	4"	75W	Yes	Yes
RDL6GIM/16/5CTS	72788	1,200	16W	120V	Selectable	90	100°	6"	85W	Yes	Yes
SQUARE											
RDL4SQ/9/5CTS-46	71130	570	9W	120V	Selectable	90	110°	4"	50W	Yes	Yes
RDL6SQ/11/5CTS-46	71134	770	11W	120V	Selectable	90	110°	6"	65W	Yes	Yes
RDL6SQ/15/5CTS-46	71135	1,000	15W	120V	Selectable	90	110°	6"	75W	Yes	Yes
ACCESSORIES (SOLD SEPARATELY)											
MODEL #	ORDER CODE	DESCRIPTION									
RDL/CBL/5CTS/6FT97	70880	6' LOW VOLTAGE EXTENSION CABLE FOR USE WITH 4", 6" AND 8" ROUND									
RDL/CBL/5CTS/6FT46	71090	6' LOW VOLTAGE EXTENSION CABLE FOR USE WITH 3" ROUND, GIMBAL OR SQUARE									
RDL4-FRAME-KIT	77223	4" FRAME-IN KIT									
RDL6-FRAME-KIT	77225	6" FRAME-IN KIT									

LED INDOOR LUMINAIRES

RECESSED DOWNLIGHTING

SLIM FIT CANLESS - DEEP REGRESS - CCT SELECTABLE

- High efficacy, up to 83 lumens per watt (LPW)
- 50,000 hours lifetime (L70)
- Ambient operating temperature: - 4F° to 113°F
- Deep regress reflector provides low glare and comfortable uniform optical distribution
- Strong low profile design with white aluminum trim and polycarbonate lens
- Recessed housing not required, remote J-box provides flexibility in mounting



6" BAFFLE TRIM



4" SMOOTH TRIM



SPECIFICATIONS

MODEL #	ORDER CODE	LUMENS	WATTAGE	INPUT VOLTAGE	CCT	CRI	BEAM ANGLE	HOUSING SIZE	INCANDESCENT REPLACEMENT WATTAGE	ENERGY STAR	T24 JA8
SMOOTH											
DLD3S-7CS	73706	500	7W	90mA	Selectable	90	105°	3"	50W	Yes	Yes
DLD4S-7CS	73287	580	7W	70mA	Selectable	90	110°	4"	50W	Yes	Yes
DLD6S-10CS	73289	770	10W	90mA	Selectable	90	110°	6"	65W	Yes	Yes
DLD6S-13CS	73291	1,000	13W	125mA	Selectable	90	110°	6"	75W	Yes	Yes
DLD6S-16CS	73293	1,200	15.5W	145mA	Selectable	90	110°	6"	85W	Yes	Yes
DLD8S-21CS	73752	1,700	21W	200mA	Selectable	90	110°	8"	150W	Yes	Yes
BAFFLE											
DLD3B-7CS	73769	500	7W	90mA	Selectable	90	105°	3"	50W	Yes	Yes
DLD4B-7CS	73299	580	7W	70mA	Selectable	90	110°	4"	50W	Yes	Yes
DLD6B-10CS	73301	770	10W	90mA	Selectable	90	110°	6"	65W	Yes	Yes
DLD6B-13CS	73303	1,000	13W	125mA	Selectable	90	110°	6"	75W	Yes	Yes
DLD6B-16CS	73305	1,200	15.5W	145mA	Selectable	90	110°	6"	85W	Yes	Yes
DLD8B-21CS	73778	1,700	21W	200mA	Selectable	90	110°	8"	150W	Yes	Yes

LED INDOOR LUMINAIRES

RECESSED DOWNLIGHTING

SLIM FIT CANLESS - DEEP REGRESS - COLOR TRIMS

- Steel construction



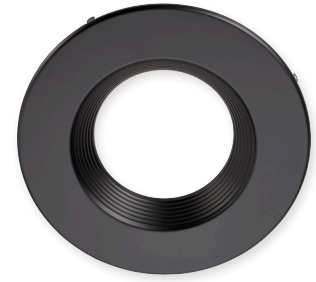
BLACK SMOOTH



BRONZE SMOOTH



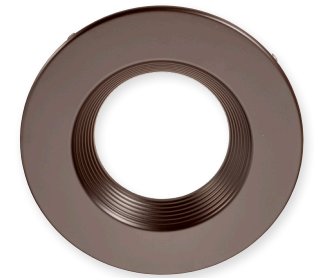
BRUSHED
NICKEL SMOOTH



BLACK BAFFLE

SPECIFICATIONS

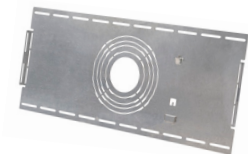
MODEL #	ORDER CODE	SIZE	COLOR	TRIM STYLE	COMPATIBLE DOWNLIGHT
DLD-UNV-FRAMEKIT	73642	Universal			3", 4", 6", 8" Deep Regress Downlights
DLD3S-TRIM-BL	73440	3"	Black	Smooth	DLD3S-7CS
DLD3S-TRIM-BZ	73442	3"	Bronze	Smooth	DLD3S-7CS
DLD3S-TRIM-BN	73444	3"	Brushed Nickel	Smooth	DLD3S-7CS
DLD3B-TRIM-BL	73446	3"	Black	Baffle	DLD3B-7CS
DLD3B-TRIM-BZ	73448	3"	Bronze	Baffle	DLD3B-7CS
DLD3B-TRIM-BN	73460	3"	Brushed Nickel	Baffle	DLD3B-7CS
DLD4S-TRIM-BL	73469	4"	Black	Smooth	DLD4S-7CS
DLD4S-TRIM-BZ	73474	4"	Bronze	Smooth	DLD4S-7CS
DLD4S-TRIM-BN	73644	4"	Brushed Nickel	Smooth	DLD4S-7CS
DLD4B-TRIM-BL	73969	4"	Black	Baffle	DLD4B-7CS
DLD4B-TRIM-BZ	73700	4"	Bronze	Baffle	DLD4B-7CS
DLD4B-TRIM-BN	73551	4"	Brushed Nickel	Baffle	DLD4B-7CS
DLD6S-TRIM-BL	73552	6"	Black	Smooth	DLD6S-10CS, DLD6S-13CS, DLD6S-16CS
DLD6S-TRIM-BZ	73789	6"	Bronze	Smooth	DLD6S-10CS, DLD6S-13CS, DLD6S-16CS
DLD6S-TRIM-BN	73841	6"	Brushed Nickel	Smooth	DLD6S-10CS, DLD6S-13CS, DLD6S-16CS
DLD6B-TRIM-BL	73842	6"	Black	Baffle	DLD6B-10CS, DLD6B-13CS, DLD6B-16CS
DLD6B-TRIM-BZ	73632	6"	Bronze	Baffle	DLD6B-10CS, DLD6B-13CS, DLD6B-16CS
DLD6B-TRIM-BN	73633	6"	Brushed Nickel	Baffle	DLD6B-10CS, DLD6B-13CS, DLD6B-16CS
DLD8S-TRIM-BL	73634	8"	Black	Smooth	DLD8S-21CS
DLD8S-TRIM-BZ	73635	8"	Bronze	Smooth	DLD8S-21CS
DLD8S-TRIM-BN	73636	8"	Brushed Nickel	Smooth	DLD8S-21CS
DLD8B-TRIM-BL	73637	8"	Black	Baffle	DLD8B-21CS
DLD8B-TRIM-BZ	73638	8"	Bronze	Baffle	DLD8B-21CS
DLD8B-TRIM-BN	73640	8"	Brushed Nickel	Baffle	DLD8B-21CS
RDL/CBL/5CTS/6FT46	71090	6'	Low Voltage Extension Cable	---	---



BRONZE BAFFLE



BRUSHED
NICKEL BAFFLE



UNIVERSAL FRAME KIT



LOW VOLTAGE
EXTENSION CABLE

LED INDOOR LUMINAIRES

RECESSED DOWNLIGHTING

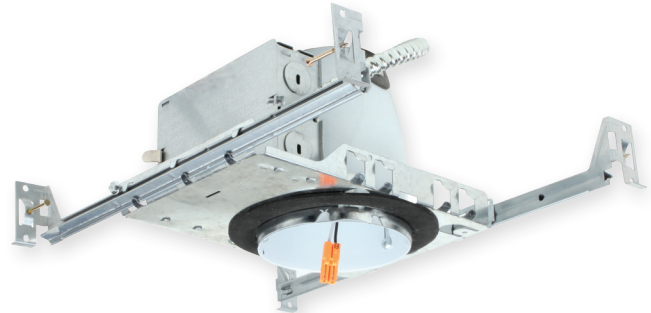
HOUSINGS - NEW CONSTRUCTION/REMODEL

- Steel housing construction contains:
 - (1) 1-1/8" KO
 - (6) 7/8" KO
 - (4) pryouts
- Quick-connect for ease of connection for LED trim kits
- Compatible with most 4" and 6" downlight modules



SPECIFICATIONS

MODEL #	ORDER CODE	SIZE
REMODEL		
RH4/RLED/IC/AT-28	79991	4"
RH6/RLED/IC/AT-28	79993	6"
NEW CONSTRUCTION		
RH4/NLED/IC/AT-28	79990	4"
RH6/NLED/IC/AT-28	79992	6"



4" NEW CONSTRUCTION



6" NEW CONSTRUCTION



4" REMODEL



6" REMODEL

LED INDOOR LUMINAIRES

RECESSED DOWNLIGHTING

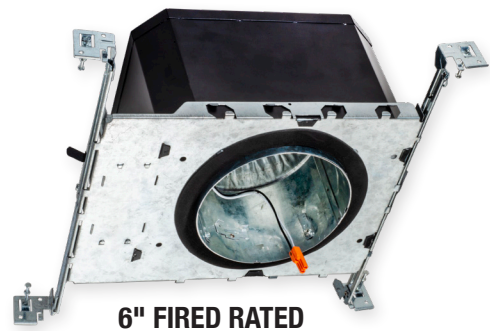
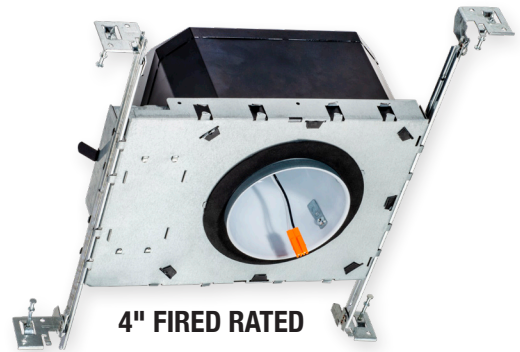
HOUSINGS - FIRE RATED

- 2-Hour fire rated, UL Listed (UL1598 / UL263)
- Steel housing construction contains:
 - (1) 1-1/8" KO
 - (1) 1/2" KO
 - (3) 7/8" KO
 - (4) pryouts with strain relief
- Non-screw base quick connector for snap-in connection of LED downlights
- For use with 4" or 6" LED trim kits



SPECIFICATIONS

MODEL #	ORDER CODE	SIZE	DESCRIPTION
RH4/NLED/IC/AT/F	70290	4"	For New Construction
RH6/NLED/IC/AT/F	70291	6"	For New Construction



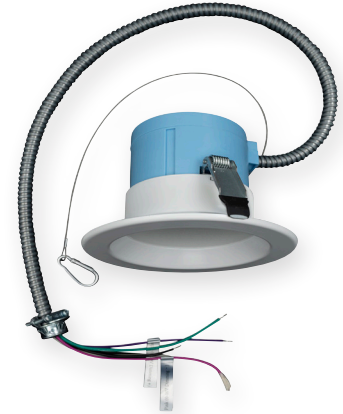
RECESSED DOWNLIGHTING

COMMERCIAL DOWNLIGHTS

- Power & CCT field selectable switch to adjust between 3 wattages and 5 color temperature at installation
- 120-277V with 0-10V dimming
- 50,000 hours lifetime (L70)
- Ambient operating temperature: - 13F° to 104°F
- Deep regress design provides low glare and comfortable optical distribution



POWER SELECT



4" SMOOTH

SPECIFICATIONS

MODEL #	ORDER CODE	LUMENS	WATTAGE	INPUT VOLTAGE	CCT	CRI	BEAM ANGLE	HOUSING SIZE	INCANDESCENT REPLACEMENT WATTAGE	T24 JAB
CDL4S-13WPCS-U	75865	630 900 1,200L	6W 9W 13W	120-277V	Selectable	90	90°	4"	75W	Yes
CDL6S-16WPCS-U	75866	800 1,150 1,500L	8W 12W 16W	120-277V	Selectable	90	95°	6"	100W	Yes
CDL8S-26WPCS-U	75867	1,550 2,000 2,500L	15W 20W 26W	120-277V	Selectable	90	95°	8"	150W	Yes
CDL10S-36WPCS-U	75868	2,000 2,500 3,500L	20W 25W 36W	120-277V	Selectable	90	100°	10"	200W	Yes
CDL4S-RM-12WPCS-U	75869	630 900 1,100L	6W 9W 12W	120-277V	Selectable	90	95°	4"	75W	Yes
CDL6S-RM-24WPCS-U	75870	1,100 1,500 2,000L	12W 16W 24W	120-277V	Selectable	90	95°	6"	125W	Yes
CDL8S-RM-30WPCS-U	75871	1,500 2,000 2,500L	16W 22W 30W	120-277V	Selectable	90	95°	8"	150W	Yes

COLOR TRIMS (SOLD SEPARATELY)

MODEL #	ORDER CODE	SIZE	COLOR	TRIM STYLE	COMPATIBLE DOWNLIGHT	COMPATIBLE DOWNLIGHT
CDL4-TRIM-MB-S	76922	4"	MATTE BLACK	SMOOTH	CDL4S-13WPCS-U	CDL4S-RM-12WPCS-U
CDL4-TRIM-BN-S	76923	4"	BRUSHED NICKLE	SMOOTH	CDL4S-13WPCS-U	CDL4S-RM-12WPCS-U
CDL4-TRIM-BZ-S	76924	4"	BRONZE	SMOOTH	CDL4S-13WPCS-U	CDL4S-RM-12WPCS-U
CDL4-TRIM-MS-S	76925	4"	MATTE SILVER	SMOOTH	CDL4S-13WPCS-U	CDL4S-RM-12WPCS-U
CDL6-TRIM-MB-S	76926	6"	MATTE BLACK	SMOOTH	CDL6S-16WPCS-U	CDL6S-RM-24WPCS-U
CDL6-TRIM-BN-S	76927	6"	BRUSHED NICKLE	SMOOTH	CDL6S-16WPCS-U	CDL6S-RM-24WPCS-U
CDL6-TRIM-BZ-S	76928	6"	BRONZE	SMOOTH	CDL6S-16WPCS-U	CDL6S-RM-24WPCS-U
CDL6-TRIM-MS-S	76929	6"	MATTE SILVER	SMOOTH	CDL6S-16WPCS-U	CDL6S-RM-24WPCS-U
CDL8-TRIM-MB-S	76930	8"	MATTE BLACK	SMOOTH	CDL8S-26WPCS-U	CDL8S-RM-30WPCS-U
CDL8-TRIM-BN-S	76931	8"	BRUSHED NICKLE	SMOOTH	CDL8S-26WPCS-U	CDL8S-RM-30WPCS-U
CDL8-TRIM-BZ-S	76932	8"	BRONZE	SMOOTH	CDL8S-26WPCS-U	CDL8S-RM-30WPCS-U
CDL8-TRIM-MS-S	76933	8"	MATTE SILVER	SMOOTH	CDL8S-26WPCS-U	CDL8S-RM-30WPCS-U
CDL10-TRIM-MB-S	76934	10"	MATTE BLACK	SMOOTH	CDL10S-36WPCS-U	---
CDL10-TRIM-BN-S	76935	10"	BRUSHED NICKLE	SMOOTH	CDL10S-36WPCS-U	---
CDL10-TRIM-BZ-S	76936	10"	BRONZE SMOOTH	SMOOTH	CDL10S-36WPCS-U	---
CDL10-TRIM-MS-S	76937	10"	MATTE SILVER	SMOOTH	CDL10S-36WPCS-U	---

ACCESSORIES (SOLD SEPARATELY)

MODEL #	ORDER CODE	DESCRIPTION
CDL-GR4	75872	4" GOOF RING
CDL-GR6	75873	6" GOOF RING
CDL-GR8	75874	8" GOOF RING
CDL-GR10	75875	10" GOOF RING
CDL-EMBB8	75876	8W EMERGENCY BATTERY BACKUP DRIVER
CDL-DWP	75877	DRY WALL PAN
CDL-HB	75878	HANGER BARS
CDL-J-BOX	75879	J-BOX

LED INDOOR LUMINAIRES

LED INDOOR LUMINAIRES SURFACE MOUNT

Surface Mount Downlights - CCT Selectable
Surface Mount Disk Lights - CCT Selectable
Surface Mount Disk Lights
Surface Mount Disk Lights with Motion Sensor



SURFACE MOUNT

SURFACE MOUNT DOWNLIGHTS - CCT SELECTABLE

- High efficacy, up to 76 lumens per watt (LPW)
- 50,000 hours lifetime (L70)
- Ambient operating temperature: -4°F to 104°F
- Sleek, ultrathin profile with smooth white trim
- Uniform wide beam light distribution
- Torsion springs and E26 base adapter accessories included for retrofit mounting for the Motion Sensor model
- Directly install in most 3.5" or 4" round or octagon junction boxes



5"



7" WITH MOTION SENSOR



7"

5 CCT SELECT

2700K 3000K 3500K 4000K 5000K

ENERGY STAR LISTED Intertek T24 JA8 HIGH EFFICACY LIGHTING REQUIREMENT DISTRIBUABLE LED DAMP LOCATION WET LOCATION 90 CRI

SPECIFICATIONS

MODEL #	ORDER CODE	LUMENS	WATTAGE	INPUT VOLTAGE	CCT	CRI	BEAM ANGLE	FINISH	SIZE	INCANDESCENT REPLACEMENT WATTAGE	LOCATION RATING	ENERGY STAR
SMD5/RND/11/CTS-46	70967	770	11W	120V	Selectable	90	110°	White	5"	65W	Wet	Yes
SMD7/RND/17/CTS-46	70969	1,250	17W	120V	Selectable	90	110°	White	7"	85W	Wet	Yes
WITH MOTION SENSOR												
SMD7/RND/13/CTS/MS	71018	1,000	13W	120V	Selectable	90	110°	White	7"	75W	Damp	Yes

LED INDOOR LUMINAIRES

SURFACE MOUNT

SURFACE MOUNT DISK LIGHTS - CCT SELECTABLE

- High efficacy, up to 72 lumens per watt (LPW)
- 50,000 hours lifetime (L70)
- Ambient operating temperature: -4°F to 113°F
- Suitable for use in closets when installed in accordance with NEC requirements
- Modern and attractive design offered in white, bronze and brushed nickel finishes
- Ceiling or surface mount, designed to install with most 4" junction boxes



WHITE

BRONZE

BRUSHED NICKEL

SPECIFICATIONS

MODEL #	ORDER CODE	LUMENS	WATTAGE	INPUT VOLTAGE	CCT	CRI	BEAM ANGLE	FINISH	SIZE	INCANDESCENT REPLACEMENT WATTAGE	ENERGY STAR
SDL4/8W/WH/D/CTS	70722	580	8W	120V	Selectable	90	110°	White	4"	50W	Yes
SDL6/11W/WH/D/CTS	70723	770	11W	120V	Selectable	90	110°	White	6"	65W	Yes
SDL6/15W/WH/D/CTS	70724	1,000	15W	120V	Selectable	90	110°	White	6"	75W	Yes
SDL4/8W/BZ/D/CTS	70768	580	8W	120V	Selectable	90	110°	Bronze	4"	50W	Yes
SDL6/11W/BZ/D/CTS	70769	770	11W	120V	Selectable	90	110°	Bronze	6"	65W	Yes
SDL6/15W/BZ/D/CTS	70770	1,000	15W	120V	Selectable	90	110°	Bronze	6"	75W	Yes
SDL4-8W-BN-D-CTS	73737	580	8W	120V	Selectable	90	110°	Brushed Nickel	4"	50W	Yes
SDL6-11W-BN-D-CTS	73738	770	11W	120V	Selectable	90	110°	Brushed Nickel	6"	65W	Yes
SDL6-15W-BN-D-CTS	73739	1,000	15W	120V	Selectable	90	110°	Brushed Nickel	6"	75W	Yes

LED INDOOR LUMINAIRES

SURFACE MOUNT

SURFACE MOUNT DISK LIGHTS

- High efficacy, up to 72 lumens per watt (LPW)
- 50,000 hours lifetime (L70)
- Ambient operating temperature: -4°F to 104°F
- Suitable for use in closets when installed in accordance with NEC requirements
- Modern and attractive design offered in white, bronze and brushed nickel finishes
- Ceiling or surface mount, designed to install with most 4" junction boxes



SPECIFICATIONS

MODEL #	ORDER CODE	LUMENS	WATTAGE	INPUT VOLTAGE	CCT	CRI	BEAM ANGLE	FINISH	SIZE	INCANDESCENT REPLACEMENT WATTAGE	ENERGY STAR
SDL4-11-930-D	73954	800	11W	120V	3000K	90	100°	White	4"	50W	Yes
SDL4-11-940-D	73956	800	11W	120V	4000K	90	100°	White	4"	50W	Yes
SDL6-15-930-D	73958	1,000	15W	120V	3000K	90	100°	White	6"	75W	Yes
SDL6-15-940-D	73962	1,050	15W	120V	4000K	90	100°	White	6"	75W	Yes

LED INDOOR LUMINAIRES

SURFACE MOUNT

SURFACE MOUNT DISK LIGHTS WITH MOTION SENSOR

- High efficacy, up to 71 lumens per watt (LPW)
- 50,000 hours lifetime (L70)
- Ambient operating temperature: -4°F to 104°F
- Suitable for use in closets when installed in accordance with NEC requirements
- Integrated PIR sensor with a detection range of 16' diameter
- Special mounting bracket to position the PIR sensor to any desired angle based on entry points for optimal PIR detection



SPECIFICATIONS

MODEL #	ORDER CODE	LUMENS	WATTAGE	INPUT VOLTAGE	CCT	CRI	BEAM ANGLE	FINISH	SIZE	INCANDESCENT REPLACEMENT WATTAGE	ENERGY STAR
SDL6-14W-30K-WH-MS	73329	990	14W	120V	3000K	90	100°	White	6"	75W	Yes
SDL6-14W-40K-WH-MS	73330	1,000	14W	120V	4000K	90	100°	White	6"	75W	Yes

LED INDOOR LUMINAIRES COMMERCIAL

Flat Panels - Power & CCT Selectable

Flat Panels

Flat Panels Accessories

Troffers - Power & CCT Selectable

Troffers - Low Profile

Troffers Accessories

Linear Strip Lights

Linear Strip Lights - CCT Selectable

Linear Vapor Tight - Power & CCT Selectable

Linear - Vapor Tight

Linear - Vapor Tight - Tri-Proof

Linear - Utility Wraparound

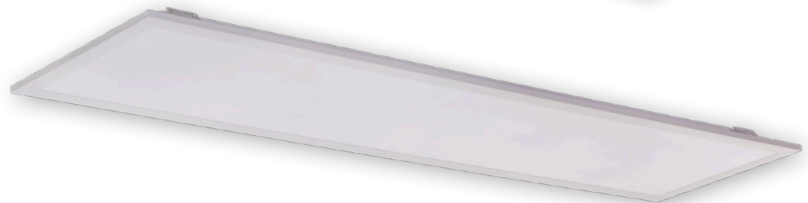
Linear - Modern Wraparound



COMMERCIAL

FLAT PANELS - POWER & CCT SELECTABLE

- Choose from 3 wattages and 3 color temperatures for up to 9 possible configurations in one fixture
- Backlit technology with precision optics for uniform illumination
- 50,000 hours lifetime (L70)
- Ambient operating temperature: -4°F to 113°F
- Steel housing with white powder coat finish, smooth frame and polystyrene lens
- Fits standard drop ceiling
- Suspension, surface or recessed mount kits sold separately



**POWER
SELECT**

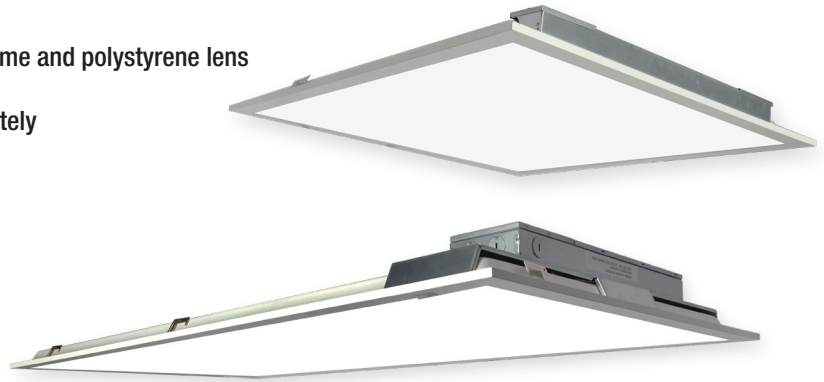
SPECIFICATIONS

MODEL #	ORDER CODE	LUMENS	EM LUMENS	WATTAGE	INPUT VOLTAGE	CCT	CRI	BEAM ANGLE	SIZE	FLUORESCENT REPLACEMENT WATTAGE	DLC
PL14-40WPCTS-D	75766	2,300 3,450 4,600	---	20W 30W 40W	120-277V	Selectable	80	120°	1' x 4'	2x 32W T8	Standard
PL22-30WPCTS-D	76944	2,735/3,386/3,983	---	20W/25W/30W	120-277V	Selectable	80	120°	2' x 2'	3x 32W T8	Premium
PL22-30WPCTS-D-EM	76945	2,735/3,386/3,983	1,300	20W/25W/30W	120-277V	Selectable	80	120°	2' x 2'	3x 32W T8	Premium
PL24-40WPCTS-D	75768	3,900 4,550 5,200	---	30W 35W 40W	120-277V	Selectable	80	120°	2' x 4'	4x 32W T8 HBF	Premium
PL24-40WPCTS-D-EM	75769	3,900 4,550 5,200	1,300	30W 35W 40W	120-277V	Selectable	80	120°	2' x 4'	4x 32W T8 HBF	Premium
PL24-50WPCTS-D	72996	4,200 5,600 6,750	---	30W 40W 50W	120-277V	Selectable	80	120°	2' x 4'	4x 32W T8 HBF	Premium
PL24-50WPCTS-D-EM	75770	4,200 5,600 6,750	1,300	30W 40W 50W	120-277V	Selectable	80	120°	2' x 4'	4x 32W T8 HBF	Premium

LED INDOOR LUMINAIRES

FLAT PANELS

- Backlit technology with precision optics for uniform illumination
- 50,000 hours lifetime (L70)
- Ambient operating temperature: -4°F to 113°F
- Steel housing with white powder coat finish, smooth frame and polystyrene lens
- Fits standard drop ceiling
- Suspension, surface or recessed mount kits sold separately



EMERGENCY BATTERY
BACK UP MODEL



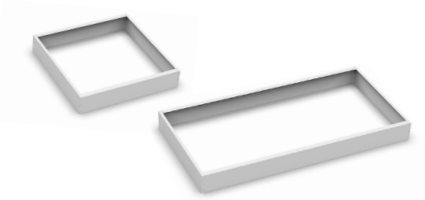
SPECIFICATIONS

MODEL #	ORDER CODE	LUMENS	EM LUMENS	WATTAGE	INPUT VOLTAGE	CCT	CRI	BEAM ANGLE	SIZE	FLUORESCENT REPLACEMENT WATTAGE	DLC
PL22-30W-30K-D	75750	3,300	---	30W	120-277V	3000K	80	120°	2' x 2'	2x 32W T8	Standard
PL22-30W-30K-D-EM	75751	3,300	1,200	30W	120-277V	3000K	80	120°	2' x 2'	2x 32W T8	Standard
PL22-30W-35K-D	75752	3,300	---	30W	120-277V	3500K	80	120°	2' x 2'	2x 32W T8	Standard
PL22-30W-35K-D-EM	75753	3,300	1,200	30W	120-277V	3500K	80	120°	2' x 2'	2x 32W T8	Standard
PL22-30W-40K-D	75754	3,300	---	30W	120-277V	4000K	80	120°	2' x 2'	2x 32W T8	Standard
PL22-30W-40K-D-EM	75755	3,300	1,200	30W	120-277V	4000K	80	120°	2' x 2'	2x 32W T8	Standard
PL22-30W-50K-D	75756	3,300	---	30W	120-277V	5000K	80	120°	2' x 2'	2x 32W T8	Standard
PL22-30W-50K-D-EM	75757	3,300	1,200	30W	120-277V	5000K	80	120°	2' x 2'	2x 32W T8	Standard
PL24-40W-30K-D	75758	4,400	---	40W	120-277V	3000K	80	120°	2' x 4'	3x 32W T8	Standard
PL24-40W-30K-D-EM	75759	4,400	1,250	40W	120-277V	3000K	80	120°	2' x 4'	3x 32W T8	Standard
PL24-40W-35K-D	75760	4,400	---	40W	120-277V	3500K	80	120°	2' x 4'	3x 32W T8	Standard
PL24-40W-35K-D-EM	75761	4,400	1,250	40W	120-277V	3500K	80	120°	2' x 4'	3x 32W T8	Standard
PL24-40W-40K-D	75762	4,400	---	40W	120-277V	4000K	80	120°	2' x 4'	3x 32W T8	Standard
PL24-40W-40K-D-EM	75763	4,400	1,250	40W	120-277V	4000K	80	120°	2' x 4'	3x 32W T8	Standard
PL24-40W-50K-D	75764	4,400	---	40W	120-277V	5000K	80	120°	2' x 4'	3x 32W T8	Standard
PL24-40W-50K-D-EM	75765	4,400	1,250	40W	120-277V	5000K	80	120°	2' x 4'	3x 32W T8	Standard

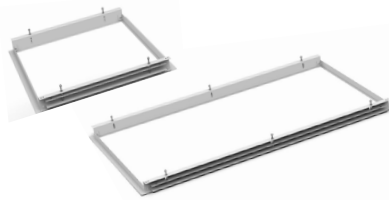
COMMERCIAL

FLAT PANELS ACCESSORIES

- Compatible with standard and selectable flat panels



**SURFACE MOUNT
FRAME KITS**



**SHEETROCK
FLANGE KITS**



**2' X 4' SUSPENDED
MOUNT CABLE KIT**

SPECIFICATIONS

MODEL #	ORDER CODE	DESCRIPTION
FRAME KITS		
PL14-FRAME-LP	75771	1' X 4' SURFACE MOUNT FRAME KIT- LOW PROFILE 2" (NOT FOR USE WITH EM PANELS)
PL22-FRAME-LP	75772	2' X 2' SURFACE MOUNT FRAME KIT LOW PROFILE 2" (NOT FOR USE WITH EM PANELS)
PL24-FRAME-LP	75773	2' X 4' SURFACE MOUNT FRAME KIT- LOW PROFILE 2" (NOT FOR USE WITH EM PANELS)
F-L14/FRAME-87	70279	1' X 4' SURFACE MOUNT FRAME KIT 4"
F-L22/FRAME-87	70280	2' X 2' SURFACE MOUNT FRAME KIT 4"
F-L24/FRAME-87	70281	2' X 4' SURFACE MOUNT FRAME KIT 4"
FLANGE KITS		
F-L14/FLANGE-87	70276	1' X 4' SHEETROCK FLANGE KIT
F-L22/FLANGE-87	70277	2' X 2' SHEETROCK FLANGE KIT
F-L24/FLANGE-87	70278	2' X 4' SHEETROCK FLANGE KIT
CABLE KITS		
F-L22/CABLE/BL-87	70282	4' SUSPENDED MOUNT CABLE KIT FOR USE WITH 2' X 2' FLAT PANEL
F-L24/CABLE/BL-87	70283	4' SUSPENDED MOUNT CABLE KIT FOR USE WITH 2' X 4' FLAT PANEL
DIMMER		
WD-DS710	70605	DIMMER 0-10V

COMMERCIAL

TROFFERS - POWER & CCT SELECTABLE

- Choose from three wattages and three color temperatures for up to nine possible configurations in one fixture
- High efficacy, 125 lumens per watt (LPW)
- 50,000 hours lifetime (L70)
- Ambient operating temperature: -4°F to 104°F
- White frame, steel housing
- Polycarbonate lens
- Drop ceiling, suspension and surface mount options



**POWER
SELECT**

SPECIFICATIONS

MODEL #	ORDER CODE	LUMENS	EM LUMENS*	WATTAGE	INPUT VOLTAGE	CCT	CRI	SIZE	FLUORESCENT REPLACEMENT WATTAGE	DLC
F-VTC22/40/PCTS/D	72758	2,500/3,750/5,000	650	20W/30W/40W	120-277V	Selectable	80	2' x 2'	2x 32W T8	Premium
F-VTC24/50/PCTS/D	72759	3,750/5,000/6,250	650	30W/40W/50W	120-277V	Selectable	80	2' x 4'	3x 32W T8	Premium

LED INDOOR LUMINAIRES

COMMERCIAL

TROFFERS - LOW PROFILE

- High efficacy, up to 125 lumens per watt (LPW)
- 50,000 hours lifetime (L70)
- Ambient operating temperature: -4°F to 113°F
- White frame, steel housing
- Polycarbonate lens
- Drop ceiling, recessed or surface mount options

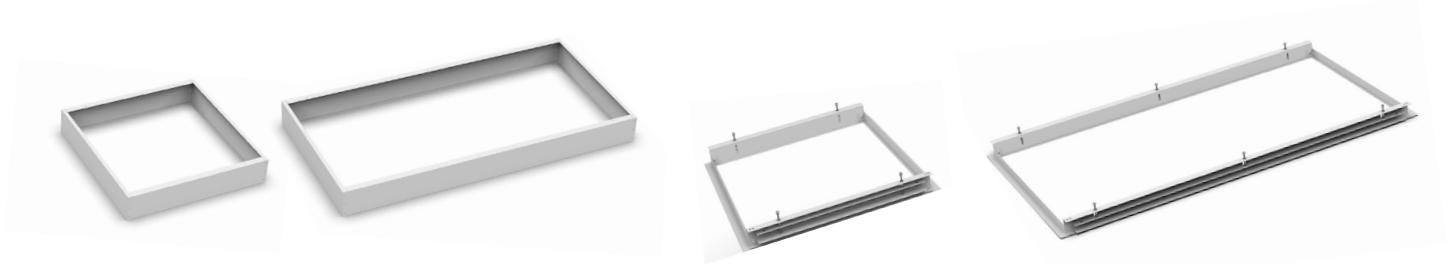


SPECIFICATIONS

MODEL #	ORDER CODE	LUMENS	EM LUMENS*	WATTAGE	INPUT VOLTAGE	CCT	CRI	BEAM ANGLE	SIZE	FLUORESCENT REPLACEMENT WATTAGE	DLC
VTC22-30-835-D-87	73497	3,750	650	30W	120-277V	3500K	80	120°	2' x 2'	28W	Standard
VTC22-30-840-D-87	73498	3,750	650	30W	120-277V	4000K	80	120°	2' x 2'	28W	Standard
VTC24-40-835-D-87	73499	5,000	650	40W	120-277V	3500K	80	120°	2' x 4'	47W	Premium
VTC24-40-840-D-87	73500	5,000	650	40W	120-277V	4000K	80	120°	2' x 4'	47W	Premium

TROFFERS - ACCESSORIES

- Compatible with Low Profile & Power & CCT Selectable Troffers



**SURFACE MOUNT
FRAME KITS**

**SHEETROCK
FLANGE KITS**

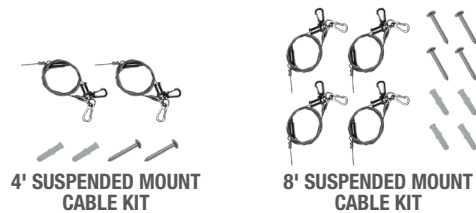
SPECIFICATIONS

MODEL #	ORDER CODE	DESCRIPTION
F-L22/FRAME-87	70280	2' X 2' SURFACE MOUNT FRAME KIT - 24" X 24" X 4"
F-L24/FRAME-87	70281	2' X 4' SURFACE MOUNT FRAME KIT - 24" X 48" X 4"
F-L22/FLANGE-87	70277	2' X 2' SHEETROCK FLANGE KIT
F-L24/FLANGE-87	70278	2' X 4' SHEETROCK FLANGE KIT
BEL4W-UNV	72764	LED EMERGENCY DRIVER, *EM LUMENS 650 WITH ABOVE TROFFERS
BEL5/120-277V-92	70585	EMERGENCY LED DRIVER 120-277V, *EM LUMENS 650 WITH ABOVE TROFFERS
WD-DS710	70605	DIMMER, 0-10V

COMMERCIAL

LINEAR STRIP LIGHTS

- High efficacy, 130 lumens per watt (LPW)
- 50,000 hours lifetime (L70)
- Ambient operating temperature: -4°F to 113°F
- Press to release buttons allow for quick tool-less access to the wiring compartment
- Slim design offers a 2" narrow body
- Typical for mounting heights up to 15'



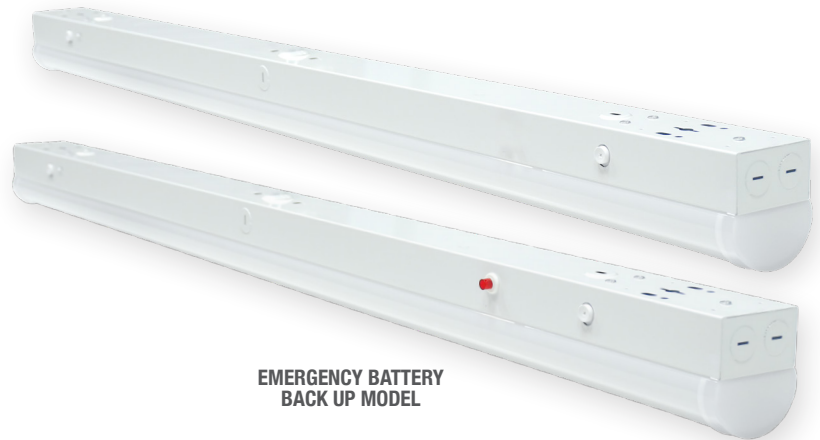
SPECIFICATIONS

MODEL #	ORDER CODE	LUMENS	WATTAGE	INPUT VOLTAGE	CCT	CRI	BEAM ANGLE	SIZE	FLUORESCENT REPLACEMENT WATTAGE	DLC
LS4-40-40K-D	74433	5,200	40W	120-277V	4000K	80	120°	4FT	2 x 32W T8	Standard
LS4-40-50K-D	74434	5,200	40W	120-277V	5000K	80	120°	4FT	2 x 32W T8	Standard
LS8-64-40K-D	74435	8,320	64W	120-277V	4000K	80	120°	8FT	F96 T12(110W)	Standard
LS8-64-50K-D	74436	8,320	64W	120-277V	5000K	80	120°	8FT	F96 T12(110W)	Standard
ACCESSORIES (SOLD SEPARATELY)										
MODEL #	ORDER CODE	DESCRIPTION								
F-L4/CABLE/CTS-87	71110	4' SUSPENDED MOUNT CABLE KIT - INCLUDES (2) CABLES AND MOUNTING HARDWARE								
F-L8/CABLE/CTS-87	71111	8' SUSPENDED MOUNT CABLE KIT - INCLUDES (4) CABLES AND MOUNTING HARDWARE								

LED INDOOR LUMINAIRES

LINEAR STRIP LIGHTS - CCT SELECTABLE

- High efficacy, 140 lumens per watt (LPW)
- 50,000 hours lifetime (L70)
- Ambient operating temperature: -4°F to 104°F
- Press to release buttons allow for quick tool-less access to the wiring compartment
- Typical for mounting heights up to 15'



SPECIFICATIONS

MODEL #	ORDER CODE	LUMENS	EM LUMENS	WATTAGE	INPUT VOLTAGE	CCT	CRI	BEAM ANGLE	SIZE	FLUORESCENT REPLACEMENT WATTAGE	DLC
F-L2/20W/CTS/D-87	72709	2,800	---	20W	120-277V	Selectable	84	120°	2'	1 x 32W T8	Standard
F-L4/40W/CTS/D-87	71104	5,600	---	40W	120-277V	Selectable	84	120°	4'	2 x 32W T8	Standard
F-L8/64W/CTS/D-87	71107	8,960	---	64W	120-277V	Selectable	84	120°	8'	F96 T12 (110W)	Standard
WITH EMERGENCY BATTERY BACKUP											
F-L4/40W/CTS/EM-87	71105	5,600	1,400	40W	120-277V	Selectable	84	120°	4'	2 x 32W T8	Standard
F-L8/64W/CTS/EM-87	71108	8,960	2,800	64W	120-277V	Selectable	84	120°	8'	F96 T12 (110W)	Standard
WITH MOTION SENSOR											
F-L4/40W/CTS/MS-87	71106	5,600	---	40W	120-277V	Selectable	84	120°	4'	2 x 32W T8	Standard
F-L8/64W/CTS/MS-87	71109	8,960	---	64W	120-277V	Selectable	84	120°	8'	F96 T12 (110W)	Standard
ACCESSORIES (SOLD SEPARATELY)											
MODEL #	ORDER CODE	DESCRIPTION									
F-L4/CABLE/CTS-87	71110	4' SUSPENDED MOUNT CABLE KIT - INCLUDES (2) CABLES AND MOUNTING HARDWARE									
F-L8/CABLE/CTS-87	71111	8' SUSPENDED MOUNT CABLE KIT - INCLUDES (4) CABLES AND MOUNTING HARDWARE									
F-LS/COUPLER-87	71112	END-TO-END CONNECTOR KIT									

LED INDOOR LUMINAIRES

COMMERCIAL

LINEAR VAPOR TIGHT - POWER & CCT SELECTABLE

- Choose 3 wattages and 3 color temperature at installation for 9 possible configurations
- Meets harsh demands IP66 Rated, IK09 impact rating, NEMA 4X housing
- High efficacy, up to 145 lumens per watt (LPW)
- Ambient operating temperature: -40°F to 113°F
- Durable UL 5VA flame rated polycarbonate lens and gray housing
- Surface mount installation



POWER SELECT



SUSPENSION MOUNT CABLE

SPECIFICATIONS

MODEL #	ORDER CODE	LUMENS	EM LUMENS	WATTAGE	INPUT VOLTAGE	CCT	CRI	SIZE	FLUORESCENT REPLACEMENT WATTAGE	DLC
LVT2-20-CS	73811	2,600	---	20W	120-277V	Selectable	80	2FT	32W T8	Standard, Premium
LVT4-50PCS	73814	4,350 5,800 7,250	---	30W 40W 50W	120-277V	Selectable	80	4FT	2 x 54W T5	Standard, Premium
LVT4-50PCS-EM	73815	4,350 5,800 7,250	900	30W 40W 50W	120-277V	Selectable	80	4FT	2 x 54W T5	Standard, Premium
LVT4-50PCS-EMS	73816	4,350 5,800 7,250	1,100	30W 40W 50W	120-277V	Selectable	80	4FT	2 x 54W T5	Standard, Premium
LVT4-50PCS-MS	73817	4,350 5,800 7,250	---	30W 40W 50W	120-277V	Selectable	80	4FT	2 x 54W T5	Standard, Premium
LVT8-70PCS	73818	7,250 8,700 10,150	---	50W 60W 70W	120-277V	Selectable	80	8FT	F96T12 VHO 185W	Standard, Premium

ACCESSORIES (SOLD SEPARATELY)

MODEL #	ORDER CODE	DESCRIPTION
LVT-ANGL-MNT	73821	ANGLE MOUNT KIT
LVT-JBOX-MNT	73822	J-BOX MOUNT KIT
F-LED-CABLE 2PK	72708	5.5' SUSPENDED MOUNT CABLE KIT

LED INDOOR LUMINAIRES

LINEAR VAPOR TIGHT

- Meets harsh demands IP66 Rated, IK09 impact rating, NEMA 4X housing
- High efficacy, up to 130 lumens per watt (LPW)
- Ambient operating temperature: -40°F to 113°F
- Durable UL 5VA flame rated polycarbonate lens and gray housing
- Surface mount installation



ANGLE MOUNT KIT
J-BOX MOUNT KIT



SPECIFICATIONS

MODEL #	ORDER CODE	LUMENS	WATTAGE	INPUT VOLTAGE	CCT	CRI	SIZE	FLUORESCENT REPLACEMENT WATTAGE	DLC
LVT4-40-40K	73812	5,200	40W	120-277V	4000K	80	4FT	2x 32W T8	Standard, Premium
LVT4-40-50K	73813	5,200	40W	120-277V	5000K	80	4FT	2x 32W T8	Standard, Premium
ACCESSORIES (SOLD SEPARATELY)									
MODEL #	ORDER CODE	DESCRIPTION							
LVT-ANGL-MNT	73821	ANGLE MOUNT KIT							
LVT-JBOX-MNT	73822	J-BOX MOUNT KIT							

COMMERCIAL

LINEAR VAPOR TIGHT - TRI-PROOF

- High efficacy, up to 130 lumens per watt (LPW)
- 50,000 hours lifetime (L70)
- Ambient operating temperature: -40°F to 105°F
- Aluminum housing for thermal management with polycarbonate lens
- Suspension or surface mount



SUSPENSION
MOUNT CABLE



END-TO-END BRACKET
& 10" CONNECTOR CORD



SPECIFICATIONS

MODEL #	ORDER CODE	LUMENS	EM LUMENS	WATTAGE	INPUT VOLTAGE	CCT	CRI	BEAM ANGLE	SIZE	FLUORESCENT REPLACEMENT WATTAGE	DLC
F-VT4/50W/40K-86	71055	6,500	---	50W	120-277V	4000K	80	120°	4'	96W	Standard
F-VT4/50W/50K-86	71056	6,500	---	50W	120-277V	5000K	80	120°	4'	96W	Standard
WITH EMERGENCY BATTERY BACKUP											
F-VT4/50W/40K/EM	71058	5,750	500	50W	120-277V	4000K	80	120°	4'	96W	Standard
F-VT4/50W/50K/EM	71059	5,750	500	50W	120-277V	5000K	80	120°	4'	96W	Standard
ACCESSORIES (SOLD SEPARATELY)											
MODEL #	ORDER CODE	DESCRIPTION									
F-VT-COUPLER	71040	END-TO-END BRACKET AND 10" CONNECTOR CORD									
F-VT-10FT CORD-86	71033	10' END-TO-END CONNECTOR CORD									
F-LED-CABLE 2PK	72708	SUSPENSION MOUNT CABLE									

LED INDOOR LUMINAIRES

COMMERCIAL

LINEAR - UTILITY WRAPAROUND

- High efficacy, 115 lumens per watt (LPW)
- 50,000 hours lifetime (L70)
- Ambient operating temperature: -4°F to 104°F
- Durable white steel housing with prismatic polycarbonate lens
- Side ½" knockouts allow easy access connection for wire and conduit



SPECIFICATIONS

MODEL #	ORDER CODE	LUMENS	WATTAGE	INPUT VOLTAGE	CCT	CRI	BEAM ANGLE	SIZE	FLUORESCENT REPLACEMENT WATTAGE	DLC
LWRAPU2-20-40K-D	74430	2,300	20W	120-277V	4000K	80	105°	2FT	2x 17W T8	Standard
LWRAPU2-20-50K-D	74431	2,300	20W	120-277V	5000K	80	105°	2FT	2x 17W T8	Standard
LWRAPU4-40-40K-D	74428	4,600	40W	120-277V	4000K	80	105°	4FT	2x 32W T8	Standard
LWRAPU4-40-50K-D	74429	4,600	40W	120-277V	5000K	80	105°	4FT	2x 32W T8	Standard

LED INDOOR LUMINAIRES

COMMERCIAL

LINEAR - MODERN WRAPAROUND

- CCT Selectable switch 3500K/4000K/5000K available on select models
- High efficacy, 115 lumens per watt (LPW)
- 50,000 hours lifetime (L70)
- Ambient operating temperature: -4°F to 104°F
- Sleek modern white steel housing with frosted polycarbonate lens
- Side ½" knockouts allow easy access connection for wire and conduit



WIDE BODY STYLE

SPECIFICATIONS

MODEL #	ORDER CODE	LUMENS	EM LUMENS	WATTAGE	INPUT VOLTAGE	CCT	CRI	BEAM ANGLE	SIZE	FLOURESCENT REPLACEMENT WATTAGE	DLC
STANDARD											
LWRAP2-25-40K-D	74422	2,875	---	25W	120-277V	4000K	80	105°	2FT	2x 17W T8	Standard
LWRAP2-25-50K-D	74423	2,875	---	25W	120-277V	5000K	80	105°	2FT	2x 17W T8	Standard
LWRAP4-48-40K-D	74424	5,520	---	48W	120-277V	4000K	80	105°	4FT	2x 32W T8	Standard
LWRAP4-48-50K-D	74425	5,520	---	48W	120-277V	5000K	80	105°	4FT	2x 32W T8	Standard
CCT SELECTABLE											
LWRAP4-48-CS-D	74426	5,500 5,520 5,500	---	48W	120-277V	Selectable	80	105°	4FT	2x 32W T8	Standard
LWRAP4EM-48-CS-D	74427	4,900 5,000 4,900	1,000	48W	120-277V	Selectable	80	105°	4FT	2x 32W T8	Standard
WIDE BODY STYLE											
LWRAPW4-50-PCS-D	74432	3,657 4,657 5,689	---	30W 40W 50W	120-277V	Selectable	80	105°	4FT	2x 32W T8 HBF	Standard

LED INDOOR LUMINAIRES

LED INDOOR LUMINAIRES INDUSTRIAL

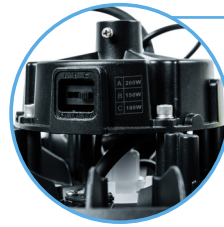
Round High Bay - Power Selectable
Round High Bay - Power & CCT Selectable
Round High Bay - Satellite Pro
Linear High Bay - Power and CCT Selectable
Linear High Bay



INDUSTRIAL

ROUND HIGH BAY - POWER SELECTABLE

- High efficacy, 170 lumens per watt (LPW)
- 50,000 hours lifetime (L70)
- Ambient operating temperature: -40°F to 122°F
- Die-cast aluminum construction with black powder coat finish
- Includes: 6FT power and dimming cord with leads, 1.7FT safety cable, J-hook & hardware



**POWER
SELECT**

SPECIFICATIONS

MODEL #	ORDER CODE	LUMENS	WATTAGE	INPUT VOLTAGE	CCT	CRI	BEAM ANGLE	HID REPLACEMENT WATTAGE	FLUORESCENT REPLACEMENT	DLC
HBC-24L-50K-PS	77106	15,675 20,265 24,000	95W 125W 150W	120-277V	5000K	80	110°	450W	6-LAMP 54W T5HO	Premium
HBC-30L-50K-PS	77107	19,375 23,250 30,000	125W 150W 200W	120-277V	5000K	80	110°	575W	10 LAMP T8 HBF	Premium
HBC-40L-50K-PS	77108	29,750 34,000 40,080	175W 200W 240W	120-277V	5000K	80	110°	800W	10-LAMP 54W T5HO	Premium
MODEL #	ORDER CODE	DESCRIPTION								
ACCESSORIES (SOLD SEPARATELY)										
HBC-PCR1	77111	CLEAR REFLECTOR FOR 150W ROUND HIGH BAY								
HBC-PCR2	77112	CLEAR REFLECTOR FOR 200W ROUND HIGH BAY								
HBC-PCR3	77113	CLEAR REFLECTOR FOR 240W ROUND HIGH BAY								
HBC-SMB1	77114	SURFACE MOUNT BRACKET FOR 150W ROUND HIGH BAY								
HBC-SMB2	77115	SURFACE MOUNT BRACKET FOR 200W ROUND HIGH BAY								
HBC-SMB3	77116	SURFACE MOUNT BRACKET FOR 240W ROUND HIGH BAY								
HBC-JBOX-PM-BL	73609	J-BOX FOR 3/4" NPT PIPE OR PENDANT MOUNT								
OS-PIR-UNV	75850	OCCUPANCY SENSOR 120-277V								
OS-PIR-12V	75851	OCCUPANCY SENSOR-12V								
OS-PIR-BT-12V	75852	BLUETOOTH® OCCUPANCY SENSOR-12V								
F-LUHB/RC/G3	72725	REMOTE CONTROL FOR OCCUPANCY SENSORS (ORDER ONE PER PROJECT)								
F-LUHB/EMKIT	72728	EMERGENCY BATTERY BACKUP KIT40W 120-277V, INCLUDES REMOTE PUSH TO TEST								

LED INDOOR LUMINAIRES

ROUND HIGH BAY - POWER AND CCT SELECTABLE

- Choose from three wattage and two color temperatures for up to six possible configurations
- High efficacy, 152 lumens per watt (LPW)
- 50,000 hours lifetime (L70)
- Ambient operating temperature: -40°F to 122°F
- Ambient operating temperature with Motion Sensor: -22°F to 122°F
- Reduced glare optical lens
- Optional plug-and-play motion sensor



2 CCT SELECT
4000K | 5000K



SPECIFICATIONS

MODEL #	ORDER CODE	LUMENS	EM LUMENS*	WATTAGE	INPUT VOLTAGE	CCT	CRI	BEAM ANGLE	HID REPLACEMENT WATTAGE	DLC
HBC-150W-PCTS-BL	73567	15,500 18,600 22,900	5,500	150W	120-277V	Selectable	80	90°	250W 320W 400W	Premium
HBC-150W-PCTS-WH	73568	15,500 18,600 22,900	5,500	150W	120-277V	Selectable	80	90°	250W 320W 400W	Premium
HBC-200W-PCTS-BL	73569	22,900 27,900 30,500	7,000	200W	120-277V	Selectable	80	90°	400W 400W-600W 600W	Premium
HBC-200W-PCTS-WH	73570	22,900 27,900 30,500	7,000	200W	120-277V	Selectable	80	90°	400W 400W-600W 600W	Premium
MODEL #	ORDER CODE	DESCRIPTION								
ACCESSORIES (SOLD SEPARATELY)										
HBC-JBOX-PM-BL	73609	BLACK J-BOX FOR 3/4" NPT PIPE OR PENDANT MOUNT								
HBC-JBOX-PM-WH	73608	WHITE J-BOX FOR 3/4" NPT PIPE OR PENDANT MOUNT								
HBC-MMS-PCTS	73572	MICROWAVE MOTION SENSOR FOR PCTS HBC								
F-LUHB/EMKIT	72728	120-277V EMERGENCY BATTERY BACKUP KIT, *EM LUMENS 5,500 & 7,000 WITH ABOVE HIGH BAYS								

INDUSTRIAL

ROUND HIGH BAY - SATELLITE PRO

- High efficacy, 138 lumens per watt (LPW)
- 50,000 hours lifetime (L70)
- Ambient operating temperature: -30°F to 122°F
- Typical for mounting heights up to 35'
- IP69K rated for maximum resistance of dust, steam, and high-pressure water
- NSF certified for food processing and hose down requirements



ACCESSORIES



SPECIFICATIONS

MODEL #	ORDER CODE	LUMENS	EM LUMENS*	WATTAGE	INPUT VOLTAGE	CCT	CRI	BEAM ANGLE	HID REPLACEMENT WATTAGE	DLC
F-LUHB/150/5K/G3	72713	20,700	5,200	150W	120-277V	5000K	85	120°	400W	Premium
F-LUHB/240/5K/G3	72718	33,120	5,200	240W	120-277V	5000K	85	120°	400-600W	Premium
HIGH VOLTAGE										
F-LUHB/150/5K/HVG3	72717	20,700	5,200	150W	277-480V	5000K	85	120°	400W	Premium
F-LUHB/240/5K/HVG3	72715	33,120	5,200	240W	277-480V	5000K	85	120°	400-600W	Premium
ACCESSORIES (SOLD SEPARATELY)										
MODEL #	ORDER CODE	DESCRIPTION								
F-LUHB/MS/G3	72721	MICROWAVE MOTION SENSOR								
F-LUHB/RC/G3	72725	REMOTE CONTROL FOR MICROWAVE MOTION SENSOR								
F-LUHB/M10NPTKITG3	72727	NPT ADAPTER KIT M10 TO 3/4", M10 TO 1/2"								
F-LUHB/EMKIT	72728	120-277V EMERGENCY BATTERY BACKUP KIT *5,200 LUMENS WHEN USED WITH ABOVE HIGH BAYS								

LED INDOOR LUMINAIRES

LINEAR HIGH BAY - POWER & CCT SELECTABLE

- Choose from three wattage and three color temperatures for up to nine possible configurations
- High efficacy, 156 lumens per watt (LPW)
- 50,000 hours lifetime (L70) @131°F
- 100,000 hours lifetime (L70) @ 77°F
- Ambient operating temperature: -40°F to 131°F
- Ambient operating temperature EM models: 32°F to 140°F
- White aluminum housing with frosted lens



POWER SELECT

SPECIFICATIONS

MODEL #	ORDER CODE	LUMENS	WATTAGE	INPUT VOLTAGE	CCT	CRI	BEAM ANGLE	HID REPLACEMENT WATTAGE	FLUORESCENT REPLACEMENT WATTAGE	DLC
POWER & CCT SELECTABLE										
LHB-15L-W-PCS-U	75829	9,500 12,500 15,000	60W 80W 100W	120-277V	Selectable	80	90°	200W	6-Lamp 32W T8 NBF	Premium
LHB-30L-W-PCS-U	75827	18,600 24,000 30,000	120W 160W 200W	120-277V	Selectable	80	90°	575W	10 Lamp T8 HBF	Premium
LHB-30L-W-PCS-HV	75828	18,600 24,000 30,000	120W 160W 200W	277-480V	Selectable	80	90°	575W	10 Lamp T8 HBF	Premium
POWER & CCT SELECTABLE WITH EMERGENCY BATTERY BACKUP										
LHB-30L-W-PCS-UEM	75825	18,600 24,000 30,000	120W 160W 200W	120-277V	Selectable	80	90°	575W	10 Lamp T8 HBF	Premium
LHB-30L-W-PCS-HVEM	75826	18,600 24,000 30,000	120W 160W 200W	277-480V	Selectable	80	90°	575W	10 Lamp T8 HBF	Premium

ACCESSORIES (SOLD SEPARATELY)		
MODEL #	ORDER CODE	DESCRIPTION
LHB-SMB1	75842	SURFACE MOUNT BRACKET FOR 14"-18" LINEAR HIGH BAYS
LHB-SMB2	75843	SURFACE MOUNT BRACKET FOR 23"-46" LINEAR HIGH BAYS
LHB-PMB1	75844	PENDANT MOUNT BRACKET FOR 14"-18" LINEAR HIGH BAYS
LHB-PMB2	75845	PENDANT MOUNT BRACKET FOR 23"-46" LINEAR HIGH BAYS
LHB-WG1	75846	WIRE GUARD FOR 14" LINEAR HIGH BAY
LHB-WG2	75847	WIRE GUARD FOR 18" LINEAR HIGH BAY
LHB-WG3	75848	WIRE GUARD FOR 23" LINEAR HIGH BAY
LHB-WG4	75849	WIRE GUARD FOR 46" LINEAR HIGH BAY

ACCESSORIES (SOLD SEPARATELY)		
MODEL #	ORDER CODE	DESCRIPTION
OS-PIR-12V	75851	OCCUPANCY SENSOR-12V
OS-PIR-BT-12V	75852	BLUETOOTH® OCCUPANCY SENSOR-12V
LHB-EM-25W-UNV	75853	EMERGENCY BATTERY BACKUP KIT 25W 120-277V
CS515-12-WH	74441	12FT CORDSET 120V NEMA 5-15 15A STRAIGHT BLADE- WHITE
CSL515-12-WH	74443	12FT CORDSET 120V NEMA L5-15 15A TWIST LOCK-WHITE
CSL715-12-WH	74444	12FT CORDSET 277V NEMA L7-15 15A TWIST LOCK-WHITE
CSL820-12-WH	74445	12FT CORDSET 480V NEMA L8-20 20A TWIST LOCK-WHITE

LED INDOOR LUMINAIRES

INDUSTRIAL

LINEAR HIGH BAY

- High efficacy, 150 lumens per watt (LPW)
- 50,000 hours lifetime (L70) @131°F
- 100,000 hours lifetime (L70) @ 77°F
- Ambient operating temperature: -40°F to 131°F
- White aluminum housing with frosted lens



SPECIFICATIONS

MODEL #	ORDER CODE	LUMENS	WATTAGE	FIXTURE LENGTH	INPUT VOLTAGE	CCT	CRI	BEAM ANGLE	HID REPLACEMENT WATTAGE	FLUORESCENT REPLACEMENT WATTAGE	DLC
LHB-18L-W-40K-U	75830	18,000	120W	14"	120-277V	4000K	80	90°	250W	6-Lamp 32WT8 NBF	Premium
LHB-18L-W-50K-U	75831	18,000	120W	14"	120-277V	5000K	80	90°	250W	6-Lamp 32WT8 NBF	Premium
LHB-24L-W-40K-U	75832	24,000	160W	18"	120-277V	4000K	80	90°	400W	6-Lamp 54W T5HO	Premium
LHB-24L-W-50K-U	75833	24,000	160W	18"	120-277V	5000K	80	90°	400W	6-Lamp 54W T5HO	Premium
LHB-30L-W-40K-U	75834	30,000	200W	18"	120-277V	4000K	80	90°	575W	10 Lamp T8 HBF	Premium
LHB-30L-W-50K-U	75835	30,000	200W	18"	120-277V	5000K	80	90°	575W	10 Lamp T8 HBF	Premium
LHB-36L-W-40K-U	75836	36,000	240W	23"	120-277V	4000K	80	90°	750W	8-Lamp 54W T5HO	Premium
LHB-36L-W-50K-U	75837	36,000	240W	23"	120-277V	5000K	80	90°	750W	8-Lamp 54W T5HO	Premium
LHB-48L-W-40K-U	75838	48,000	320W	23"	120-277V	4000K	80	90°	875W	10-Lamp 54W T5HO	Premium
LHB-48L-W-50K-U	75839	48,000	320W	23"	120-277V	5000K	80	90°	875W	10-Lamp 54W T5HO	Premium
LHB-63L-W-40K-U	75840	63,000	420W	46"	120-277V	4000K	80	90°	1,000W	---	Premium
LHB-63L-W-50K-U	75841	63,000	420W	46"	120-277V	5000K	80	90°	1,000W	---	Premium

ACCESSORIES (SOLD SEPARATELY)

MODEL #	ORDER CODE	DESCRIPTION
LHB-SMB1	75842	SURFACE MOUNT BRACKET FOR 14"-18" LINEAR HIGH BAYS
LHB-SMB2	75843	SURFACE MOUNT BRACKET FOR 23"-46" LINEAR HIGH BAYS
LHB-PMB1	75844	PENDANT MOUNT BRACKET FOR 14"-18" LINEAR HIGH BAYS
LHB-PMB2	75845	PENDANT MOUNT BRACKET FOR 23"-46" LINEAR HIGH BAYS
LHB-WG1	75846	WIRE GUARD FOR 14" LINEAR HIGH BAY
LHB-WG2	75847	WIRE GUARD FOR 18" LINEAR HIGH BAY
LHB-WG3	75848	WIRE GUARD FOR 23" LINEAR HIGH BAY
LHB-WG4	75849	WIRE GUARD FOR 46" LINEAR HIGH BAY

ACCESSORIES (SOLD SEPARATELY)

MODEL #	ORDER CODE	DESCRIPTION
OS-PIR-12V	75851	PIR OCCUPANCY SENSOR-12V
OS-PIR-BT-12V	75852	PIR BLUETOOTH® OCCUPANCY SENSOR-12V
LHB-EM-25W-UNV	75853	EMERGENCY BATTERY BACKUP KIT 25W 120-277V
CS515-12-WH	74441	12FT CORDSET 120V NEMA 5-15 15A STRAIGHT BLADE- WHITE
CSL515-12-WH	74443	12FT CORDSET 120V NEMA L5-15 15A TWIST LOCK-WHITE
CSL715-12-WH	74444	12FT CORDSET 277V NEMA L7-15 15A TWIST LOCK-WHITE
CSL820-12-WH	74445	12FT CORDSET 480V NEMA L8-20 20A TWIST LOCK-WHITE

LED INDOOR LUMINAIRES

LED INDOOR LUMINAIRES EXIT & EMERGENCY LIGHTING

Exit Signs

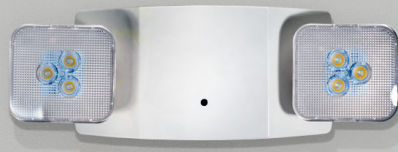
Exit & Emergency Lighting - NYC Approved

Exit & Emergency Combo

Exit & Emergency Combo - Remote Capable

Emergency Lighting

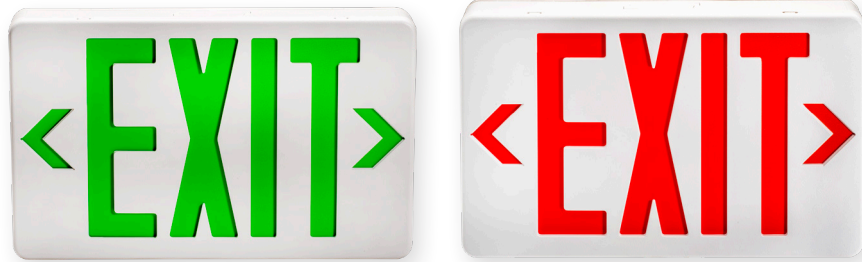
Exit & Emergency Light Remote Heads



EXIT & EMERGENCY

EXIT SIGNS

- Meets NFPA 70, NFPA 101, UL 924, NEC/OSHA Standards
- Ambient operating temperature: 50°F to 104°F
- 6" red or green EXIT letters with 3/4" stroke
- Ni-Cad battery backup for 90 minutes of emergency illumination
- Surface mount or recessed mount with kit



STANDARD SURFACE MOUNT



EDGE-LIT EXIT SIGN RECESSED



EDGE-LIT SURFACE MOUNT CLEAR FACE



EDGE-LIT SURFACE MOUNT MIRRORED FACE



SPECIFICATIONS

MODEL #	ORDER CODE	WATTAGE	INPUT VOLTAGE	LETTER COLOR	HOUSING	PANEL TYPE	NUMBER OF FACES	T20
STANDARD								
ES/LED/RW/B	75119	2.5W	120/277V	Red	White Thermoplastic	---	Single/Double	Yes
ES/LED/GW/B	75121	2.5W	120/277V	Green	White Thermoplastic	---	Single/Double	Yes
EDGE-LIT								
ESEL/SFS/RCL/B	71095	3W	120/277V	Red	Brushed Aluminum	Clear	Single	Yes
ESEL/DFS/RMR/B	71097	3W	120/277V	Red	Brushed Aluminum	Mirror	Double	Yes
ESEL/SFS/GCL/B	71099	3W	120/277V	Green	Brushed Aluminum	Clear	Single	Yes
ESEL/DFS/GMR/B	71100	3W	120/277V	Green	Brushed Aluminum	Mirror	Double	Yes
ACCESSORIES (SOLD SEPARATELY)								
MODEL #	ORDER CODE	DESCRIPTION						
ESEL/RMKIT	71103	EXIT SIGN RECESSED MOUNT KIT, FOR USE WITH LED EDGE-LIT EXIT SIGNS						

LED INDOOR LUMINAIRES

EXIT & EMERGENCY

EXIT & EMERGENCY LIGHTING - NYC APPROVED

- Meets NFPA 70, NFPA 101, UL 924, NEC/OSHA Standards
- Ambient operating temperature: 50°F to 104°F
- 8" red or green EXIT letters with 1" stroke
- Ni-Cad battery backup for 90 minutes of emergency illumination
- Surface and recessed mount models available



90 MINUTE
EMERGENCY LIGHTING



EXIT & EMERGENCY COMBO



RECESSED MOUNT
MIRRORED FACE



EDGE-LIT SURFACE MOUNT
CLEAR FACE



SPECIFICATIONS

MODEL #	ORDER CODE	WATTAGE	INPUT VOLTAGE	LETTER COLOR	HOUSING	PANEL TYPE	NUMBER OF FACES	NUMBER OF LAMP HEADS
EXIT SIGN								
ES/LED/RW/B-NYC	75120	2.5W	120/277V	Red	20 Gauge Steel, White Finish	---	Single / Double	---
EDGE-LIT SURFACE MOUNT EXIT SIGN								
ESEL/SFS/RCL/B-NYC	71096	3W	120/277V	Red	Brushed Aluminum	Clear	Single	---
ESEL/DFS/RMR/B-NYC	71098	3W	120/277V	Red	Brushed Aluminum	Mirror	Double	---
ESEL/SFR/RCL/B-NYC	71101	3W	120/277V	Red	Brushed Aluminum	Clear	Single	---
ESEL/DFR/RMR/B-NYC	71102	3W	120/277V	Red	Brushed Aluminum	Mirror	Double	---
EXIT & EMERGENCY COMBO								
ESC/LED/RW-NYC	75140	1W Per Head	120/277V	Red	20 Gauge Steel, White Finish	---	Single / Double	3
ESC/LED/RW/2H-NYC	71234	1W Per Head	120/277V	Red	20 Gauge Steel, White Finish	---	Single / Double	2
EMERGENCY LIGHTING								
EL2/LED/WH-NYC	75110	1W Per Head	120/277V	---	20 Gauge Steel, White Finish	---	---	2
EL3/LED/WH-NYC	75112	1W Per Head	120/277V	---	20 Gauge Steel, White Finish	---	---	3

LED INDOOR LUMINAIRES

EXIT & EMERGENCY

EXIT & EMERGENCY COMBO

- Meets NFPA 70, NFPA 101, UL 924, NEC/OSHA Standards
- Ambient operating temperature: 50°F to 104°F
- 6" red or green EXIT letters with 3/4" stroke
- Ni-Cad battery backup for 90 minutes of emergency illumination
- Surface mount



SPECIFICATIONS

MODEL #	ORDER CODE	LUMENS	WATTAGE PER LAMP HEAD	INPUT VOLTAGE	LETTER COLOR	HOUSING	PANEL TYPE	NUMBER OF FACES	T20
ESC/LED/GW	75141	100	1W	120/277V	Green	White Thermoplastic	Single/Double	2	Yes
ESC/LED/RW	75139	100	1W	120/277V	Red	White Thermoplastic	Single/Double	2	Yes

EXIT & EMERGENCY COMBO - REMOTE CAPABLE

- Meets NFPA 70, NFPA 101, UL 924, NEC/OSHA Standards
- Ambient operating temperature: 50°F to 104°F
- 6" red EXIT letters with 3/4" stroke
- Ni-Cad battery backup for 90 minutes of emergency illumination
- Ceiling or wall mount with included canopy



SPECIFICATIONS

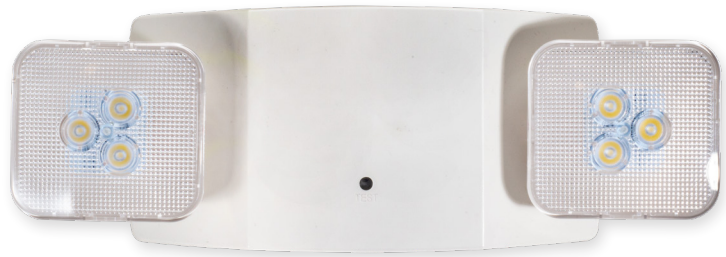
MODEL #	ORDER CODE	LUMENS	WATTAGE PER LAMP HEAD	INPUT VOLTAGE	LETTER COLOR	HOUSING	PANEL TYPE	NUMBER OF FACES	T20
ESC/LED/RW/RC	72112	150	1W	120/277V	Red	White Thermoplastic	Single	2	Yes

LED INDOOR LUMINAIRES

EXIT & EMERGENCY

EMERGENCY LIGHTING

- Meets NFPA 70, NFPA 101, UL924, NEC/OSHA Standards
- Ambient operating temperature: 50°F to 104°F
- Battery backup with accessible push to test button for 90 minutes of illumination during a power outage
- Lamp heads track and swivel for full range adjustability
- *Self-testing diagnostic feature continuously monitors operating condition; Meets Title 20 regulations



SPECIFICATIONS

MODEL #	ORDER CODE	LUMENS	WATTAGE	INPUT VOLTAGE	NUMBER OF LAMPS	DESCRIPTION
EL2/LED/WH	70914	220	0.8W	120/277V	2	Emergency Light
EL2/LED/WH/ST	70915*	220	3.3W	120/277V	2	Self-Testing Emergency Light
EL2/LED/WH/RC	70916	220	1W	120/277V	2	Remote Capable Emergency Light

EXIT & EMERGENCY LIGHT REMOTE HEADS

- Meets NFPA 70, NFPA 101, UL924, NEC/OSHA Standards
- Lamp heads track and swivel for full range adjustability



EL1/LED/WH/RH



EL2/LED/WH/RH



SPECIFICATIONS

MODEL #	ORDER CODE	LUMENS	WATTAGE	INPUT VOLTAGE	NUMBER OF LAMP HEADS	LOCATION RATING	HOUSING COLOR	LENS SHAPE
EL1/LED/WH/RH	70917	75	0.75W	3.6VDC	1	Damp	White	Square
EL2/LED/WH/RH	70918	150	1.5W	3.6VDC	2	Damp	White	Square

LED INDOOR LUMINAIRES

LED OUTDOOR LUMINAIRES AREA/SITE

Area Lights - Power & CCT Selectable

Area Lights - Switchable Optics

Universal Mounting Brackets for Area & Flood Lights

Area - Barn/Yard Light

Area - Barn/Yard Light - CCT Selectable

Flood Lights- Power & CCT Selectable

Security Lights

Wall Packs - Compact - CCT Selectable

Wall Packs - Traditional - Power & CCT Selectable

Wall Packs - Traditional - Economy

Wall Packs - Traditional with Emergency Backup

Wall Packs - Adjustable - Power & CCT Selectable

Wall Packs - Full Cutoff - Power & CCT Selectable

Sports Lights - Power Selectable



AREA LIGHTS - POWER & CCT SELECTABLE

- 9 fixtures in 1
- Power Selectable: three different levels
- CCT Selectable: 3000K / 4000K / 5000K
- Photocell ready: shorting cap included
(120-277V and 347-480V photocell accessories available)
- Motion Sensor ready: integrated 3-pin receptacle for PIR or Microwave sensor accessories
- Slipfitter Mount pre-installed (pole and trunnion mount accessories available)



150W



300W



480W



SPECIFICATIONS

MODEL #	ORDER CODE	LUMENS	WATTAGE	INPUT VOLTAGE	CCT	IES DISTRIBUTION TYPE	HID REPLACEMENT WATTAGE	DLC
ARL-150PCS-T3	73972	10,290 14,300 20,700	70W 100W 150W	120-277V	Selectable	Type III	280W 400W 600W	Premium
ARL-150PCS-T4	73974					Type IV		
ARL-150PCS-T5	73976					Type V		
ARL-300PCS-T3	73978	29,400 35,750 41,400	200W 250W 300W	120-277V	Selectable	Type III	800W 1000W 1200W	Premium
ARL-300PCS-T4	73980					Type IV		
ARL-300PCS-T5	73982					Type V		
ARL-480PCS-T3	73984	51,450 57,200 66,240	350W 400W 480W	120-277V	Selectable	Type III	1400W 1600W 1920W	Premium
ARL-480PCS-T4	73986					Type IV		
ARL-480PCS-T5	73988					Type V		
HIGH VOLTAGE								
ARL-150PCS-T3-HV	73988	10,290 14,300 20,700	70W 100W 150W	277-480V	Selectable	Type III	280W 400W 600W	Premium
ARL-150PCS-T5-HV	73990					Type V		
ARL-300PCS-T3-HV	73992					Type III		
ARL-300PCS-T5-HV	73994	Type V						
ARL-480PCS-T3-HV	73996	51,450 57,200 66,240	350W 400W 480W	277-480V	Selectable	Type III	1400W 1600W 1920W	Premium
ARL-480PCS-T4-HV	73998					Type IV		
ARL-480PCS-T5-HV	73998					Type V		
ACCESSORIES (SOLD SEPARATELY)								
MODEL #	ORDER CODE	DESCRIPTION						
WD-PC/TL/120-277	72711	120-277V TWIST-LOCK PHOTOCELL						
WD-PC/TL/480	72722	480V TWIST-LOCK PHOTOCELL						
ARL-150-480PCS-TMT	74113	TRUNNION MOUNT FOR 150-480W POWER AND CCT SELECTABLE AREA LIGHT						
ARL-PCS-MMS	74129	MICROWAVE MOTION SENSOR FOR AREA LIGHTS 150-480W POWER AND CCT SELECTABLE AREA LIGHT						
ARL-PCS-PIR-MS	74131	PIR MOTION SENSOR FOR AREA LIGHTS 150-480W POWER AND CCT SELECTABLE AREA LIGHT						
ARL-PCS-RM	79708	AREA LIGHT REMOTE CONTROL FOR PIR AND MICROWAVE MOTION SENSORS						
ARL-480PCS-POLMT-F	74106	FIXED POLE MOUNT FOR 150-480W POWER AND CCT SELECTABLE AREA LIGHT						
ARL-300PCS-POLMT-A	74108	ADJUSTABLE POLE MOUNT FOR 150-300W POWER AND CCT SELECTABLE AREA LIGHT						
ARL-480PCS-POLMT-A	74110	ADJUSTABLE POLE MOUNT FOR 350-480W POWER AND CCT SELECTABLE AREA LIGHT						

LED OUTDOOR LUMINAIRES

AREA/SITE

AREA LIGHTS - SWOPTICS (SWITCHABLE OPTICS)

- 36 fixtures in 1
- Tool-less Switchable Optics (Type III installed, Type II, IV and V included)
- Power Selectable: three different levels
- CCT Selectable: 3000K / 4000K / 5000K
- Photocell ready: shorting cap included (120-277V and 347-480V photocell accessories available)
- Motion Sensor ready: integrated 3-pin receptacle for PIR or Microwave sensor accessories
- Slipfitter Mount pre-installed (pole and trunnion mount accessories available)



300W



150W



SPECIFICATIONS

MODEL #	ORDER CODE	LUMENS	WATTAGE	INPUT VOLTAGE	CCT	IES DISTRIBUTION TYPE	HID REPLACEMENT WATTAGE	DLC
ARL-150PCS-SWO	74000	9,940 13,800 19,950	70W 100W 150W	120-277V	Selectable	Type II	280W 400W 600W	Premium
						Type III*		
						Type IV		
						Type V		
ARL-300PCS-SWO	74102	28,000 33,750 39,900	200W 250W 300W	120-277V	Selectable	Type II	800W 1000W 1200W	Premium
						Type III*		
						Type IV		
						Type V		
ACCESSORIES (SOLD SEPARATELY)								
MODEL #	ORDER CODE	DESCRIPTION						
WD-PC/TL/120-277	72711	120-277V TWIST-LOCK PHOTOCELL						
ARL-PCS-MMS	74129	MICROWAVE MOTION SENSOR FOR AREA LIGHTS 150-480W POWER AND CCT SELECTABLE AREA LIGHT						
ARL-PCS-PIR-MS	74131	PIR MOTION SENSOR FOR AREA LIGHTS 150-480W POWER AND CCT SELECTABLE AREA LIGHT						
ARL-PCS-RM	79708	AREA LIGHT REMOTE CONTROL FOR PIR AND MICROWAVE MOTION SENSORS						
ARL-480PCS-POLMT-F	74106	FIXED POLE MOUNT FOR 150-480W POWER AND CCT SELECTABLE AREA LIGHT						
ARL-300PCS-POLMT-A	74108	ADJUSTABLE POLE MOUNT FOR 150-300W POWER AND CCT SELECTABLE AREA LIGHT						
ARL-150-480PCS-TMT	74113	TRUNNION MOUNT FOR 150-480W POWER AND CCT SELECTABLE AREA LIGHT						

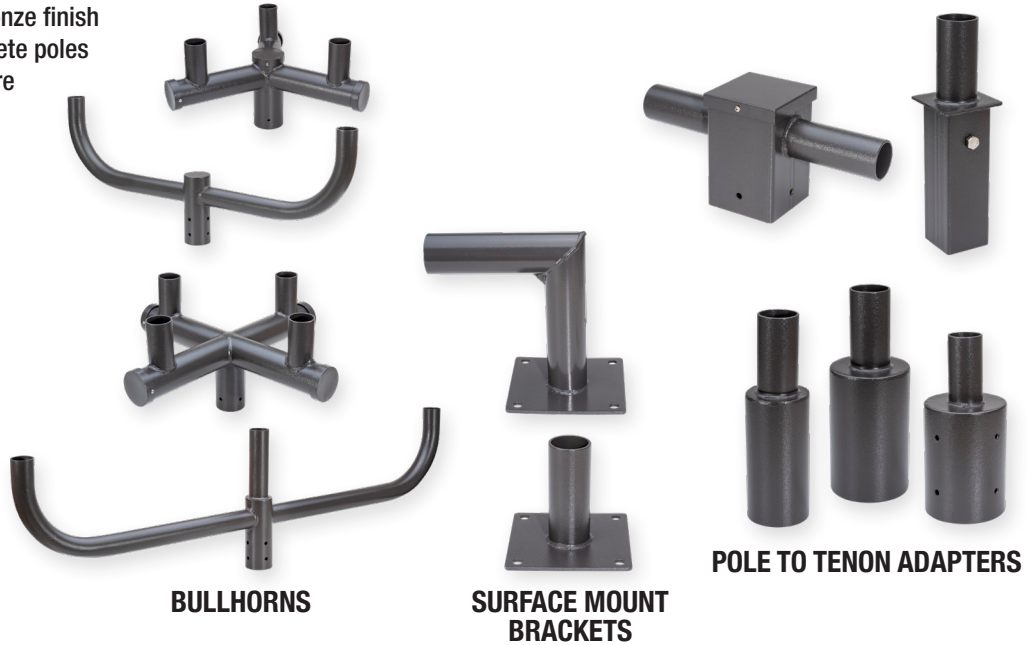
Note: All pole mounts fit round or square poles.

Note: All pole mounts fit round or square poles.

LED OUTDOOR LUMINAIRES

UNIVERSAL MOUNTING BRACKETS - FOR AREA & FLOOD LIGHTS

- Steel Construction with bronze finish
- For use with steel or concrete poles
- Includes mounting hardware



SPECIFICATIONS

MODEL #	ORDER CODE	DESCRIPTION	FIXTURE TENON SIZE	POLE TENON SIZE	MAXIMUM LOAD WEIGHT
BULLHORN					
BH2/BZ-96	70672	2 Arm Bracket	2-3/8"	2-7/8"	110 lbs.
BH3/BZ-96	70675	3 Arm Bracket	2-3/8"	2-7/8"	110 lbs.
BH3/120D/BZ-96	70710	3 Arm Bracket	2-3/8"	3-1/4"	110 lbs.
BH4/90D/BZ-96	70735	4 Arm Bracket	2-3/8"	2-3/4"	110 lbs.
SURFACE MOUNT BRACKETS					
RAWB/BZ-96	70742	Right Angle Wall Bracket	---	2-3/8"	110 lbs.
SMTA/BZ-96	70958	Straight Surface Mount Tenon Adapter	---	2"	110 lbs.
POLE TO TENON ADAPTER					
RND3TA/BZ-96	70788	Round	2-3/8"	3-1/4"	110 lbs.
RND4TA/BZ-96	70792	Round	2-3/8"	4-1/4"	110 lbs.
RND5TA/BZ-96	70904	Round	2-3/8"	5-1/4"	110 lbs.
SQ4TA/BZ-96	70755	Square	2-3/8"	3"	110 lbs.
SQ5TA/BZ-96	70760	Square	2-3/8"	4"	110 lbs.
SQ4TA2/BZ-96	70764	Square	2-3/8"	4-3/8"	110 lbs.
SQ5TA2/BZ-96	70784	Square	2-3/8"	5-1/2"	110 lbs.

AREA/SITE

AREA - BARN/YARD LIGHT

- High efficacy, 146 lumens per watt (LPW)
- 50,000 hours lifetime (L70)
- Ambient operating temperature: -40°F to 122°F
- Positionable twist-lock photocell to aim photocell as needed
- Die-cast aluminum housing with impact resistant polycarbonate lens
- Mounts directly to wall or pole; pole mounting arm included



SPECIFICATIONS

MODEL #	ORDER CODE	LUMENS	WATTAGE	INPUT VOLTAGE	CCT	CRI	IES DISTRIBUTION TYPE	FINISH	HID REPLACEMENT WATTAGE	DLC
ARL-BL-40W-50K-BZ	73574	5,856	40W	120-277V	5000K	80	V	Bronze	175W	Premium

LED OUTDOOR LUMINAIRES

AREA- BARN/YARD LIGHT - CCT SELECTABLE

- Choose from 3 wattage and 3 CCT choices in a single fixture to up to 9 possible configurations
- High efficacy, up to 166 lumens per watt (LPW)
- 50,000 hours lifetime (L70)
- Ambient operating temperature: -40°F to 122°F
- Positionable twist-lock photocell to aim photocell as needed
- Die-cast aluminum housing with impact resistant polycarbonate lens
- Mounts directly to wall or pole; pole mounting arm included



BRONZE

GRAY



POWER
SELECT

SPECIFICATIONS

MODEL #	ORDER CODE	LUMENS	WATTAGE	INPUT VOLTAGE	CCT	CRI	IES DISTRIBUTION TYPE	FINISH	HID REPLACEMENT WATTAGE	DLC
ARL-BL-60WPCTS-BZ	73575	4,973 6,537 9,285	30W 40W 60W	120-277V	Selectable	80	V	Bronze	150W 175W 275W	Premium
ARL-BL-60WPCTS-GR	73576	4,973 6,537 9,285	30W 40W 60W	120-277V	Selectable	80	V	Gray	150W 175W 275W	Premium

AREA/SITE

LED FLOOD LIGHT - POWER & CCT SELECTABLE

- Maximize jobsite versatility with five size options
- Power & CCT selectable technology
- Two mounting options included with each fixture
- Built-in Photocell or Dusk-to-Dawn Sensor included on all fixtures
- Bronze aluminum housing with glass lens

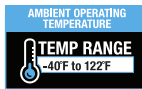


FL-30PCS-KNTR
15W/25W/30W

FL-60PCS-KNTR
40W/50W/60W

FL-100PCS-SFYK
60W/80W/100W

FL-200PCS-SFYK
120W/150W/200W



FL-290PCS-SFYK
200W/240W/290W

SPECIFICATIONS

MODEL #	ORDER CODE	UPC	INPUT VOLTAGE	POWER SELECTABLE WATTAGE	LUMENS @3000K	LUMENS @4000K	LUMENS @5000K	EFFICACY (LPW) @4000K	HID REPLACEMENT WATTAGE	MOUNT TYPE
FL-30PCS-KNTR	76850	032886316579	120-277V	15W	2,025	2,250	2,175	150	60W	KNUCKLE* TRUNNION
				25W	3,375	3,750	3,625	150	100W	
				30W	4,045	4,500	4,350	150	120W	
FL-60PCS-KNTR	76851	32886316586	120-277V	40W	5,600	6,000	5,800	150	160W	KNUCKLE* TRUNNION
				50W	7,000	7,500	7,250	150	200W	
				60W	8,400	9,000	8,700	150	240W	
FL-100PCS-SFYK	76852	32886316593	120-277V	60W	8,400	9,000	8,700	150	240W	SLIPFITTER* YOKE
				80W	11,200	12,000	11,600	150	320W	
				100W	14,000	15,000	14,500	150	400W	
FL-100PCS-SFYK-HV	76853	32886316609	277-480V	60W	8,400	9,000	8,700	150	240W	SLIPFITTER* YOKE
				80W	11,200	12,000	11,600	150	320W	
				100W	14,000	15,000	14,500	150	400W	
FL-200PCS-SFYK	76854	32886316616	120-277V	120W	16,800	18,000	17,400	150	480W	SLIPFITTER* YOKE
				150W	21,000	22,500	21,750	150	600W	
				200W	28,000	30,000	29,000	150	800W	
FL-200PCS-SFYK-HV	76855	32886316623	277-480V	120W	16,800	18,000	17,400	150	480W	SLIPFITTER* YOKE
				150W	21,000	22,500	21,750	150	600W	
				200W	28,000	30,000	29,000	150	800W	
FL-290PCS-SFYK	76856	32886316630	120-277V	200W	28,000	30,000	29,000	150	800W	SLIPFITTER* YOKE
				240W	33,600	36,000	34,800	150	960W	
				290W	40,600	43,500	42,050	150	1,160W	
FL-290PCS-SFYK-HV	76857	32886316647	277-480V	200W	28,000	30,000	29,000	150	800W	SLIPFITTER* YOKE
				240W	33,600	36,000	34,800	150	960W	
				290W	40,600	43,500	42,050	150	1,160W	

LED OUTDOOR LUMINAIRES

SECURITY LIGHTS

- High efficacy, 83 lumens per watt (LPW)
- 50,000 hours lifetime (L70)
- Ambient operating temperature: -4°F to 104°F
- Die-cast aluminum construction with impact resistant polycarbonate lens
- Mounts horizontally or vertically on standard J-box
- Motion sensor models offer 180° detection area, up to 39' range, adjustable timeout, motion sensitivity, and ambient light operating threshold, and manual override function to temporarily disable motion detection



WITH MOTION SENSOR



WITHOUT MOTION SENSOR



SPECIFICATIONS

MODEL #	ORDER CODE	LUMENS	WATTAGE	INPUT VOLTAGE	CCT	CRI	FINISH	HALOGEN REPLACEMENT WATTAGE	ENERGY STAR
WITHOUT MOTION SENSOR									
SL/24W/40K/BZ	72989	2,000	24W	120V	4000K	80	Bronze	120W (2x60W)	Yes
SL/24W/40K/WH	72991	2,000	24W	120V	4000K	80	White	120W (2x60W)	Yes
WITH MOTION SENSOR									
SL/24W/40K/BZ/MS	72990	2,000	24W	120V	4000K	80	Bronze	120W (2x60W)	Yes
SL/24W/40K/WH/MS	72992	2,000	24W	120V	4000K	80	White	120W (2x60W)	Yes

AREA/SITE

WALL PACKS - COMPACT - CCT SELECTABLE

- High efficacy, 125 lumens per watt (LPW)
- 50,000 hours lifetime (L70)
- Ambient operating temperature: -40°F to 113°F
- Integrated dusk-to-dawn photocell
- Aluminum housing with diffused polycarbonate lens
- Typical for mounting heights up to 15'



3 CCT SELECT

3500K 4000K 5000K



IP65

SPECIFICATIONS

MODEL #	ORDER CODE	LUMENS	WATTAGE	INPUT VOLTAGE	CCT	CRI	IES DISTRIBUTION TYPE	FINISH	HID REPLACEMENT WATTAGE	DLC
F-WPC/15W/CTS/BZ	71027	1,875	15W	120-277V	Selectable	80	IV	Bronze	150W	Premium
F-WPC/15W/CTS/WH	71028	1,875	15W	120-277V	Selectable	80	IV	White	150W	Premium
F-WPC/20W/CTS/BZ	71029	2,500	20W	120-277V	Selectable	80	IV	Bronze	200W	Premium
F-WPC/20W/CTS/WH	71030	2,500	20W	120-277V	Selectable	80	IV	White	200W	Premium
F-WPC/30W/CTS/BZ	71031	3,750	30W	120-277V	Selectable	80	IV	Bronze	300W	Premium
F-WPC/30W/CTS/WH	71032	3,750	30W	120-277V	Selectable	80	IV	White	300W	Premium

LED OUTDOOR LUMINAIRES

WALL PACKS - TRADITIONAL - POWER & CCT SELECTABLE

- Choose from 3 wattage and 3 CCT choices in a single fixture to up to 9 possible configurations
- High efficacy, 140 lumens per watt (LPW)
- 50,000 hours lifetime (L70)
- Ambient operating temperature: -40°F to 122°F
- Aluminum housing with IK06 impact resistant glass lens
- Integrated dusk-to-dawn photocell



POWER
SELECT

SPECIFICATIONS

MODEL #	ORDER CODE	LUMENS	WATTAGE	INPUT VOLTAGE	CCT	CRI	IES DISTRIBUTION TYPE	FINISH	HID REPLACEMENT WATTAGE	DLC
WP/40W/PCTS/BZ/PC	72983	3,920 5,600	28W 40W	120-277V	Selectable	82	IV	Bronze	100W-150W	Premium
WP/80W/PCTS/BZ/PC	72984	5,600 8,400 11,200	40W 60W 80W	120-277V	Selectable	82	IV	Bronze	150W-275W	Premium
WP/120W/PCTS/BZ/PC	72985	11,200 14,000 16,800	80W 100W 120W	120-277V	Selectable	82	IV	Bronze	320W-400W	Premium
ACCESSORIES (SOLD SEPARATELY)										
MODEL #	ORDER CODE	DESCRIPTION								
F-WP/HE/GUARD/S-95	70272	SMALL WIRE GUARD FOR USE WITH WP/40W/PCTS/BZ/PC								
F-WP/HE/GUARD/L-95	70273	LARGE WIRE GUARD FOR USE WITH WP/80W/PCTS/BZ/PC, WP/120W/PCTS/BZ/PC								
F-WP/HE/SHIELD/S	70274	SMALL SHIELD FOR USE WITH WP/40W/PCTS/BZ/PC								
F-WP/HE/SHIELD/L	70275	LARGE SHIELD FOR USE WITH WP/80W/PCTS/BZ/PC, WP/120W/PCTS/BZ/PC								

WALL PACKS - TRADITIONAL - ECONOMY

- High efficacy, 125 lumens per watt (LPW)
- 50,000 hours lifetime (L70)
- Ambient operating temperature: -40°F to 122°F
- Aluminum housing with UV resistant polycarbonate lens
- Integrated dusk-to-dawn photocell



SPECIFICATIONS

MODEL #	ORDER CODE	LUMENS	WATTAGE	INPUT VOLTAGE	CCT	CRI	IES DISTRIBUTION TYPE	FINISH	HID REPLACEMENT WATTAGE	DLC
WPE/60W/50K/BZ/PC	70480	7,500	60W	120-277V	5000K	80	IV	Bronze	160W-200W	Standard
WPE/120W/50K/BZ/PC	70550	15,000	120W	120-277V	5000K	80	IV	Bronze	320W-400W	Standard

WALL PACKS - TRADITIONAL WITH EMERGENCY BACKUP

- High efficacy, 144 lumens per watt (LPW)
- 50,000 hours lifetime (L70)
- Ambient operating temperature: -22°F to 112°F
- Die cast aluminum housing with shatter resistant borosilicate glass lens



SPECIFICATIONS

MODEL #	ORDER CODE	LUMENS	EM LUMENS	WATTAGE	INPUT VOLTAGE	CCT	CRI	IES DISTRIBUTION TYPE	FINISH	HID REPLACEMENT WATTAGE
F-WP-40W/50K/BZ/EM	74524	5,540	900	40W	120-277V	5000K	80	IV	Bronze	150W
F-WP-50W/50K/BZ/EM	74525	7,065	1,700	50W	120-277V	5000K	80	IV	Bronze	175W
ACCESSORIES (SOLD SEPARATELY)										
MODEL #	ORDER CODE	DESCRIPTION								
F-WP/HE/GUARD/S-95	70272	SMALL WIRE GUARD FOR USE WITH F-WP-40W/50K/BZ/EM								
F-WP/HE/GUARD/L-95	70273	LARGE WIRE GURARD FOR USE WITH F-WP-50W/50K/BZ/EM								
F-WP/HE/SHIELD/S	70274	SMALL SHIELD FOR USE WITH F-WP-40W/50K/BZ/EM								
F-WP/HE/SHIELD/L	70275	LARGE SHIELD FOR USE WITH F-WP-50W/50K/BZ/EM								

AREA/SITE

WALL PACKS - ADJUSTABLE - POWER & CCT SELECTABLE

- Choose from 3 wattage and 3 CCT choices in a single fixture to up to 9 possible configurations
- High efficacy, up to 140 lumens per watt (LPW)
- 50,000 hours lifetime (L70)
- Ambient operating temperature: -40°F to 113°F
- Aluminum housing with IK10 rated impact resistant polycarbonate lens
- Integrated dusk-to-dawn photocell



3 CCT SELECT

3000K 4000K 5000K



POWER SELECT

SPECIFICATIONS

MODEL #	ORDER CODE	LUMENS	WATTAGE	INPUT VOLTAGE	CCT	CRI	IES DISTRIBUTION TYPE	FINISH	HID REPLACEMENT WATTAGE	DLC
WPA-40W-PCTS-BZ-PC	72978	3,930/4,660/5,270	28W/35W/40W	120-277V	Selectable	84	II	Bronze	84W/105W/120W	Premium
WPA-75W-PCTS-BZ-PC	72979	6,060/7,570/9,440	45W/60W/75W	120-277V	Selectable	84	II	Bronze	135W/180W/225W	Premium

LED OUTDOOR LUMINAIRES

WALL PACK - FULL CUTOFF - POWER & CCT SELECTABLE

- Choose from 3 wattage and 3 CCT choices in a single fixture to up to 9 possible configurations
- High efficacy, up to 140 lumens per watt (LPW)
- 50,000 hours lifetime (L70)
- Ambient operating temperature: -40°F to 113°F
- Aluminum housing with IK10 rated impact resistant polycarbonate lens
- Integrated dusk-to-dawn photocell



POWER SELECT

SPECIFICATIONS

MODEL #	ORDER CODE	LUMENS	WATTAGE	INPUT VOLTAGE	CCT	CRI	IES DISTRIBUTION TYPE	FINISH	HID REPLACEMENT WATTAGE	DLC
WPFC-75W-PCTS-BZ	72744	6,310/7,930/10,000	45W/60W/75W	120-277V	Selectable	84	III	Bronze	135W/180W/225W	Premium

LED OUTDOOR LUMINAIRES

AREA/SITE

SPORTS LIGHT - POWER SELECTABLE

- Detachable driver allows fixture control from the pole base
- Ambient operating temperature: -40°F to 113°F
- 60,000 hours lifetime (L70)
- Black die-cast aluminum housing
- Yoke mount & twist lock shorten cap included



MOUNTS



SHIELD GUARDS



EXTENSION CORDS



LASER POINTER



**POWER
SELECT**

SPECIFICATIONS

MODEL #	ORDER CODE	LUMENS	WATTAGE	INPUT VOLTAGE	CCT	CRI	IES DISTRIBUTION TYPE	FINISH	HID REPLACEMENT WATTAGE	DLC
SP-500PS-50K	74446	48,000 62,000 75,000	300W 400W 500W	120-277V	5000K	70	Type I	Black	2,000W	Premium
SP-500PS-50K-HV	74447	48,000 62,000 75,000	300W 400W 500W	200-480V	5000K	70	Type I	Black	2,000W	Premium
SP-750PS-50K	74448	72,000 77,500 112,500	450W 500W 750W	120-277V	5000K	70	Type I	Black	3,000W	Premium
SP-750PS-50K-HV	74449	72,000 77,500 112,500	450W 500W 750W	200-480V	5000K	70	Type I	Black	3,000W	Premium
SP-1200PS-50K	74450	128,000 155,000 180,000	800W 1,000W 1,200W	120-277V	5000K	70	Type I	Black	4,800W	Premium
SP-1200PS-50K-HV	74451	128,000 155,000 180,000	800W 1,000W 1,200W	200-480V	5000K	70	Type I	Black	4,800W	Premium

ACCESSORIES (SOLD SEPARATELY)

MODEL #	ORDER CODE	DESCRIPTION
SP-SFMOUNT-500	74452	SLIPFITTER MOUNT FOR 500W SPORT LIGHT
SP-SFMOUNT-750	74453	SLIPFITTER MOUNT FOR 750W SPORT LIGHT
SP-SFMOUNT-1200	74454	SLIPFITTER MOUNT FOR 1200W SPORT LIGHT
SP-SHIELD-500	74455	SHIELD GUARD FOR 500W SPORT LIGHT
SP-SHIELD-750	74482	SHIELD GUARD FOR 750W SPORT LIGHT
SP-SHIELD-1200	74484	SHIELD GUARD FOR 1200W SPORT LIGHT
SP-EXTCORD-35FT	74486	35-FT EXTENSION CORD
SP-EXTCORD-65FT	74490	65-FT EXTENSION CORD
SP-LASERPOINTER	74500	GREEN LASER POINTER

LED OUTDOOR LUMINAIRES

LED OUTDOOR LUMINAIRES CANOPY/ GARAGE

Canopy - Round - Power & CCT Selectable
Canopy - Square



CANOPY/GARAGE

CANOPY - ROUND - POWER & CCT SELECTABLE

- Choose from 3 wattage and 3 CCT choices in a single fixture to up to 9 possible configurations
- High efficacy, up to 146 lumens per watt (LPW)
- 50,000 hours lifetime (L70)
- Ambient operating temperature: -40°F to 104°F
- Low profile design provides more clearance than traditional canopy fixtures
- Contractor-friendly removable mounting plate allows for secure, hassle-free installation
- Ceiling or pendant mount



3000K | 4000K | 5000K



POWER SELECT

SPECIFICATIONS

MODEL #	ORDER CODE	LUMENS	WATTAGE	INPUT VOLTAGE	CCT	CRI	FINISH	HID REPLACEMENT WATTAGE	DLC
CPR-60WPCTS-BZ	72768	4,388 5,741 8,329	30W 40W 60W	120-277V	Selectable	82	Bronze	150W 175W 250W	Premium
CPR-60WPCTS-WH	72769	4,388 5,741 8,329	30W 40W 60W	120-277V	Selectable	82	White	150W 175W 250W	Premium

LED OUTDOOR LUMINAIRES

CANOPY/GARAGE

CANOPY - SQUARE

- High efficacy, up to 125 lumens per watt (LPW)
- 50,000 hours lifetime (L70)
- Ambient operating temperature: -40°F to 104°F
- Die-cast aluminum housing with impact resistant polycarbonate lens



SPECIFICATIONS

MODEL #	ORDER CODE	LUMENS	WATTAGE	INPUT VOLTAGE	CCT	CRI	FINISH	HID REPLACEMENT WATTAGE	DLC
F-CPS/40W/40K/BZ	70551	5,000	40W	120-277V	4000K	80	Bronze	175W	Premium
F-CPS/40W/50K/BZ	70466	5,000	40W	120-277V	5000K	80	Bronze	175W	Premium
F-CPS/60W/40K/BZ	70477	7,500	60W	120-277V	4000K	80	Bronze	250W	Premium
F-CPS/60W/50K/BZ	70478	7,500	60W	120-277V	5000K	80	Bronze	250W	Premium

LED OUTDOOR LUMINAIRES

CROSS REFERENCE

CROSS REFERENCE

SAP MODEL #	OLD MODEL NUMBER	ORDER CODE	CATALOG SECTION	PRODUCT LINE
FL/30/50K/KN/BZ	F-FL/30/50K/KN/BZ-87	70264	Area-Site	FLOOD LIGHTS-LOW POWER
F-WPC/15W/CTS/BZ	F-WPC/15W/CTS/BZ-96	71027	Area-Site	WALL PACKS-COMPACT-CCT SELECTABLE
F-ARL-POLE-MOUNT/W	F-ARL-POLE MOUNT/W	73365	Area-Site	AREA LIGHT ACCESSORIES
F-ARL-SF/P-MOUNT	F-ARL-SF/P MOUNT	73376	Area-Site	AREA LIGHT ACCESSORIES
F-FL/15/40K/KN/BZ	F-FL/15/40K/KN/BZ-87	70267	Area-Site	FLOOD LIGHTS-LOW POWER
F-FL/15/50K/KN/BZ	F-FL/15/50K/KN/BZ-87	70263	Area-Site	FLOOD LIGHTS-LOW POWER
F-FL/30/40K/KN/BZ	F-FL/30/40K/KN/BZ-87	70268	Area-Site	FLOOD LIGHTS-LOW POWER
F-FL/50/40K/KN/BZ	F-FL/50/40K/KN/BZ-87	70269	Area-Site	FLOOD LIGHTS-LOW POWER
F-FL/50/40K/TR/BZ	F-FL/50/40K/TR/BZ-87	70270	Area-Site	FLOOD LIGHTS-LOW POWER
F-FL/50/50K/KN/BZ	F-FL/50/50K/KN/BZ-87	70265	Area-Site	FLOOD LIGHTS-LOW POWER
F-FL/50/50K/TR/BZ	F-FL/50/50K/TR/BZ-87	70266	Area-Site	FLOOD LIGHTS-LOW POWER
F-FL/70/40K/KN/BZ	F-FL/70/40K/KN/BZ-87	70251	Area-Site	FLOOD LIGHTS-MEDIUM POWER
F-FL/70/40K/SF/BZ	F-FL/70/40K/SF/BZ-87	70253	Area-Site	FLOOD LIGHTS-MEDIUM POWER
F-FL/70/40K/TR/BZ	F-FL/70/40K/TR/BZ-87	70255	Area-Site	FLOOD LIGHTS-MEDIUM POWER
F-FL/70/50K/KN/BZ	F-FL/70/50K/KN/BZ-87	70252	Area-Site	FLOOD LIGHTS-MEDIUM POWER
F-FL/70/50K/SF/BZ	F-FL/70/50K/SF/BZ-87	70254	Area-Site	FLOOD LIGHTS-MEDIUM POWER
F-FL/70/50K/TR/BZ	F-FL/70/50K/TR/BZ-87	70256	Area-Site	FLOOD LIGHTS-MEDIUM POWER
F-FL/90/40K/KN/BZ	F-FL/90/40K/KN/BZ-87	70257	Area-Site	FLOOD LIGHTS-MEDIUM POWER
F-FL/90/40K/SF/BZ	F-FL/90/40K/SF/BZ-87	70259	Area-Site	FLOOD LIGHTS-MEDIUM POWER
F-FL/90/40K/TR/BZ	F-FL/90/40K/TR/BZ-87	70261	Area-Site	FLOOD LIGHTS-MEDIUM POWER
F-FL/90/50K/KN/BZ	F-FL/90/50K/KN/BZ-87	70258	Area-Site	FLOOD LIGHTS-MEDIUM POWER
F-FL/90/50K/SF/BZ	F-FL/90/50K/SF/BZ-87	70260	Area-Site	FLOOD LIGHTS-MEDIUM POWER
F-FL/90/50K/TR/BZ	F-FL/90/50K/TR/BZ-87	70262	Area-Site	FLOOD LIGHTS-MEDIUM POWER
F-FL-150WYKMOUNT	F-FL-150WYKMOUNT-87	70296	Area-Site	FLOOD LIGHT ACCESSORIES
F-FL-300WYKMOUNT	F-FL-300WYKMOUNT-87	70462	Area-Site	FLOOD LIGHT ACCESSORIES
F-WP/HE/SHIELD/L	F-WP/HE/SHIELD/L-95	70275	Area-Site	WALL PACK-TRADITIONAL-POWER & CCT SELECTABLE
F-WP/HE/SHIELD/S	F-WP/HE/SHIELD/S-95	70274	Area-Site	WALL PACK-TRADITIONAL-POWER & CCT SELECTABLE
F-WPC/15W/CTS/WH	F-WPC/15W/CTS/WH-96	71028	Area-Site	WALL PACKS-COMPACT-CCT SELECTABLE
F-WPC/20W/CTS/BZ	F-WPC/20W/CTS/BZ-96	71029	Area-Site	WALL PACKS-COMPACT-CCT SELECTABLE
F-WPC/20W/CTS/WH	F-WPC/20W/CTS/WH-96	71030	Area-Site	WALL PACKS-COMPACT-CCT SELECTABLE
F-WPC/30W/CTS/BZ	F-WPC/30W/CTS/BZ-96	71031	Area-Site	WALL PACKS-COMPACT-CCT SELECTABLE
F-WPC/30W/CTS/WH	F-WPC/30W/CTS/WH-96	71032	Area-Site	WALL PACKS-COMPACT-CCT SELECTABLE
WPE/120W/50K/BZ/PC	F-WPE/120W/50K/BZ/PC	70550	Area-Site	WALL PACKS-TRADITIONAL-ECONOMY
WPE/60W/50K/BZ/PC	F-WPE/60W/50K/BZ/PC	70480	Area-Site	WALL PACKS-TRADITIONAL-ECONOMY
WPFC-75W-PCTS-BZ	WPFC-75W-PCTS-BZ-PC	72744	Area-Site	WALL PACKS- FULL CUTOFF-POWER & CCT SELECTABLE
F-CPS/40W/40K/BZ	F-CPS/40W/40K/BZ-87	70551	Canopy/Garage	CANOPY-SQUARE
F-CPS/40W/50K/BZ	F-CPS/40W/50K/BZ-87	70466	Canopy/Garage	CANOPY-SQUARE
F-CPS/60W/40K/BZ	F-CPS/60W/40K/BZ-87	70477	Canopy/Garage	CANOPY-SQUARE
F-CPS/60W/50K/BZ	F-CPS/60W/50K/BZ-87	70478	Canopy/Garage	CANOPY-SQUARE
F-VT-10FT-CORD-86	F-VT-10FT CORD-86	71033	Commercial	VAPORTIGHT ACCESSORIES
F-VT4/50W/40K/EM	F-VT4/50W/40K/EM-86	71058	Commercial	VAPORTIGHT

CROSS REFERENCE

SAP MODEL #	OLD MODEL NUMBER	ORDER CODE	CATALOG SECTION	PRODUCT LINE
F-VT4/50W/50K/EM	F-VT4/50W/50K/EM-86	71059	Commercial	VAPORTIGHT
F-VTC22/40/PCTS/D	F-VTC22/40/PCTS/D-86	72758	Commercial	TROFFER-POWER & CCT SELECTABLE
F-VTC24/50/PCTS/D	F-VTC24/50/PCTS/D-86	72759	Commercial	TROFFER-POWER & CCT SELECTABLE
SDL4/8W/BZ/D/CTS	SDL4/8W/BZ/D/CTS-46	70768	Flush Mount	DISK LIGHT-CCT SELECTABLE
SDL4/8W/WH/D/CTS	SDL4/8W/WH/D/CTS-46	70722	Flush Mount	SURFACE MOUNT DISK LIGHT-CCT SELECTABLE
SDL6/11W/BZ/D/CTS	SDL6/11W/BZ/D/CTS-46	70769	Flush Mount	DISK LIGHT-CCT SELECTABLE
SDL6/11W/WH/D/CTS	SDL6/11W/WH/D/CTS-46	70723	Flush Mount	SURFACE MOUNT DISK LIGHT-CCT SELECTABLE
SDL6/15W/BZ/D/CTS	SDL6/15W/BZ/D/CTS-46	70770	Flush Mount	SURFACE MOUNT DISK LIGHT-CCT SELECTABLE
SDL6/15W/WH/D/CTS	SDL6/15W/WH/D/CTS-46	70724	Flush Mount	SURFACE MOUNT DISK LIGHT-CCT SELECTABLE
LA19/10/927/GU24D	LA19/10/927/GU24D-46	70725	General Purpose	A19 - PERFORMANCE
LA19/10/930/GU24D	LA19/10/930/GU24D-46	70726	General Purpose	A19 - PERFORMANCE
LA19/10/940/GU24D	LA19/10/940/GU24D-46	70727	General Purpose	A19 - PERFORMANCE
LA21/25W/30K/UNV	LA21/25W/30K/UNV-46	70714	General Purpose	A21-COMMERCIAL
LA21/25W/40K/UNV	LA21/25W/40K/UNV-46	70715	General Purpose	A21-COMMERCIAL
LA21/25W/50K/UNV	LA21/25W/50K/UNV-46	70716	General Purpose	A21-COMMERCIAL
LG25/5W/830/ECO/D	LG25/5W/830/ECO/D-43	70718	General Purpose	GLOBE
LGU10/5/930/D/G7*	LGU10/5/930/D/G7-33*	79418	General Purpose	MINI-REFLECTOR
LGU10/5/940/D/G7*	LGU10/5/940/D/G7-33*	79419	General Purpose	MINI-REFLECTOR
LGU10/5/950/D/G7*	LGU10/5/950/D/G7-33*	79420	General Purpose	MINI-REFLECTOR
LGU10/7/830/D/G7*	LGU10/7/830/D/G7-33*	79421	General Purpose	MINI-REFLECTOR
LGU10/7/840/D/G7*	LGU10/7/840/D/G7-33*	79422	General Purpose	MINI-REFLECTOR
LGU10/7/850/D/G7*	LGU10/7/850/D/G7-33*	79423	General Purpose	MINI-REFLECTOR
LM11/3/830/NFL-46	LM11/3/830/NFL-46*	77173	General Purpose	MINI-REFLECTOR
LM11/3/850/NFL-46	LM11/3/850/NFL-46*	77175	General Purpose	MINI-REFLECTOR
LM16SP-7W-940-D*	LM16SP-7W-940-D*	73482	General Purpose	MINI-REFLECTOR
LM16SP-7W-950-D*	LM16SP-7W-950-D*	73483	General Purpose	MINI-REFLECTOR
LP30/10/927/FL/D	LP30/10/927/FL/D-46	71117	General Purpose	PAR-PERFORMANCE
LP30/10/930/FL/D	LP30/10/930/FL/D-46	71118	General Purpose	PAR-PERFORMANCE
LP30/10/940/FL/D	LP30/10/940/FL/D-46	71119	General Purpose	PAR-PERFORMANCE
LP30/10/950/FL/D	LP30/10/950/FL/D-46	71120	General Purpose	PAR-PERFORMANCE
LP30L/10/927/FL/D	LP30L/10/927/FL/D-46	71121	General Purpose	PAR-PERFORMANCE
LP30L/10/930/FL/D	LP30L/10/930/FL/D-46	71122	General Purpose	PAR-PERFORMANCE
LP30L/10/940/FL/D	LP30L/10/940/FL/D-46	71123	General Purpose	PAR-PERFORMANCE
LP30L/10/950/FL/D	LP30L/10/950/FL/D-46	71124	General Purpose	PAR-PERFORMANCE
LP38/14/927/FL/D	LP38/14/927/FL/D-46	71126	General Purpose	PAR-PERFORMANCE
LP38/14/930/FL/D	LP38/14/930/FL/D-46	71127	General Purpose	PAR-PERFORMANCE
LP38/14/940/FL/D	LP38/14/940/FL/D-46	71128	General Purpose	PAR-PERFORMANCE
LP38/14/950/FL/D	LP38/14/950/FL/D-46	71129	General Purpose	PAR-COMMERCIAL
LP38-29-930-FLUNV	LP38-29W-930-FL-UNV	73412	General Purpose	PAR-COMMERCIAL
LP38-29-930-NFLUNV	LP38-29W-930-NFL-UNV	73405	General Purpose	PAR-COMMERCIAL
LP38-29-940-FLUNV	LP38-29W-940-FL-UNV	73415	General Purpose	PAR-COMMERCIAL

CROSS REFERENCE

CROSS REFERENCE

CROSS REFERENCE

SAP MODEL #	OLD MODEL NUMBER	ORDER CODE	CATALOG SECTION	PRODUCT LINE
LP38-29-940-NFLUNV	LP38-29W-940-NFL-UNV	73406	General Purpose	PAR-COMMERCIAL
LP38-29-950-FLUNV	LP38-29W-950-FL-UNV	73416	General Purpose	PAR-COMMERCIAL
LP38-29-950-NFLUNV	LP38-29W-950-NFL-UNV	73411	General Purpose	PAR-COMMERCIAL
LARL/110/850/EX39	LARL/110/850/EX39-81	72732	HID Replacement	WALL PACK & AREA LIGHT
LARL/80/850/EX39	LARL/80/850/EX39-81	72731	HID Replacement	WALL PACK & AREA LIGHT
LPT100W-850-EX39G4	LPT100W-850-EX39-G4	73564	HID Replacement	POST TOP
LPT120W-850-EX39G4	LPT120W-850-EX39-G4	73565	HID Replacement	POST TOP
F-LHB/300PNDNTMNT	F-LHB/300PNDNTMNT-96	70582	Industrial	HIGH BAY ACCESSORIES
F-LUHB/150/5K/HVG3	F-LUHB/150/5K/HV/G3	72717	Industrial	ROUND HIGH BAY-SATELITTE PRO
F-LUHB/240/5K/HVG3	F-LUHB/240/5K/HV/G3	72715	Industrial	ROUND HIGH BAY-SATELITTE PRO
F-LUHB/M10NPTKITG3	F-LUHB/M10-NPTKIT/G3	72727	Industrial	ROUND HIGH BAY-ACCESSORIES
L2T8B/835/9F/DE-C*	L2T8B/835/9F/DE-39C*	79429	Linear Tubes	T8-BALLAST BYPASS
L2T8B/840/10C/SE	L2T8B/840/10C/SE-75	71037	Linear Tubes	T8-BALLAST BYPASS-CLEAR
L2T8B/840/9F/DE-C*	L2T8B/840/9F/DE-39C*	79430	Linear Tubes	T8-BALLAST BYPASS
L2T8B/850/10C/SE	L2T8B/850/10C/SE-75	71038	Linear Tubes	T8-BALLAST BYPASS-CLEAR
L2T8B/850/9F/DE-C*	L2T8B/850/9F/DE-39C*	79431	Linear Tubes	T8-BALLAST BYPASS
L2T8B/865/9F/DE-C*	L2T8B/865/9F/DE-39C*	79432	Linear Tubes	T8-BALLAST BYPASS
L4T5B/835/25/F/SE	L4T5B/835/25/F/SE-70	70804	Linear Tubes	T5 BALLAST BYPASS/BALLAST COMPATIBLE
L4T5B/840/25/F/SE	L4T5B/840/25/F/SE-70	70805	Linear Tubes	T5 BALLAST BYPASS/BALLAST COMPATIBLE
L4T5B/850/25/F/SE	L4T5B/850/25/F/SE-70	70806	Linear Tubes	T5 BALLAST BYPASS/BALLAST COMPATIBLE
L4T8B/35K/14F/DE*	L4T8B/35K/14F/DE-39*	70242	Linear Tubes	T8-BALLAST BYPASS
L4T8B/40K/14F/DE*	L4T8B/40K/14F/DE-39*	70243	Linear Tubes	T8-BALLAST BYPASS
L4T8B/50K/14F/DE*	L4T8B/50K/14F/DE-39*	70244	Linear Tubes	T8-BALLAST BYPASS
L4T8B/50K/17F/DE*	L4T8B/50K/17F/DE-39*	70248	Linear Tubes	T8-BALLAST BYPASS
L4T8B/65K/14F/DE*	L4T8B/65K/14F/DE-39*	70245	Linear Tubes	T8-BALLAST BYPASS
L4T8B/835/18C/SE	L4T8B/835/18C/SE-75	71041	Linear Tubes	LED TUBES-BALLAST BYPASS
L4T8B/840/14F/DE-C*	L4T8B/840/14F/DE-39C*	79434	Linear Tubes	T8-BALLAST BYPASS
L4T8B/840/18C/SE	L4T8B/840/18C/SE-75	71042	Linear Tubes	LED TUBES-BALLAST COMPATIBLE
L4T8B/850/14F/DE	L4T8B/850/14F/DE-39C*	79435	Linear Tubes	T8-BALLAST BYPASS
L4T8B/850/18C/SE	L4T8B/850/18C/SE-75	71043	Linear Tubes	LED TUBES-BALLAST COMPATIBLE
L4T8B/860/18C/SE	L4T8B/860/18C/SE-75	71044	Linear Tubes	LED TUBES-BALLAST COMPATIBLE
L4T8B/U6/835/15F	L4T8B/U6/835/15F-70	74155	Linear Tubes	T8-U BEND
L4T8B/U6/840/15F	L4T8B/U6/840/15F-70	74156	Linear Tubes	T8-U BEND
L4T8B/U6/850/15F	L4T8B/U6/850/15F-70	74157	Linear Tubes	T8-U BEND
L4T8E/835/13F/ECO	L4T8E/835/13F/ECO-70	77845	Linear Tubes	T8-BALLAST COMPATIBLE
L4T8E/840/13F/ECO	L4T8E/840/13F/ECO-70	77846	Linear Tubes	T8-BALLAST COMPATIBLE
L4T8E/850/13F/ECO	L4T8E/850/13F/ECO-70	77847	Linear Tubes	T8-BALLAST COMPATIBLE
L4T8E/U6/835/13F	L4T8E/U6/835/13F-70	74161	Linear Tubes	T8-U BEND
L4T8E/U6/840/13F	L4T8E/U6/840/13F-70	74162	Linear Tubes	T8-U BEND
L4T8E/U6/850/13F	L4T8E/U6/850/13F-70	74163	Linear Tubes	T8-U BEND
L8T8B-40W-835-FA8*	L8T8B-40W-835-FA8*	73450	Linear Tubes	LED TUBES-BALLAST COMPATIBLE

CROSS REFERENCE

SAP MODEL #	OLD MODEL NUMBER	ORDER CODE	CATALOG SECTION	PRODUCT LINE
L8T8B-40W-840-FA8*	L8T8B-40W-840-FA8*	73451	Linear Tubes	LED TUBES-BALLAST COMPATIBLE
L8T8B-40W-850-FA8*	L8T8B-40W-850-FA8*	73452	Linear Tubes	LED TUBES-BALLAST COMPATIBLE
L4T8B/40K/17F/DE*	L4T8B/40K/17F/DE-39*	70247	Linear Tubes	T8-BALLAST BYPASS
RDL/4GIM/11/5CTS	RDL/4GIM/11/5CTS-46	70889	Recessed Downlighting	SLIM FIT-CCT SELECTABLE
RDL/4GIM/15/5CTS	RDL/4GIM/15/5CTS-46	70890	Recessed Downlighting	SLIM FIT-CCT SELECTABLE
RDL/6GIM/16/5CTS	RDL/6GIM/16/5CTS-46	72788	Recessed Downlighting	SLIM FIT-CCT SELECTABLE
RDL/CBL/5CTS/6FT46	RDL/CBL/5CTS/6FT-46	71090	Recessed Downlighting	SLIM FIT-ACCESSORIES
RDL/CBL/5CTS/6FT97	RDL/CBL/5CTS/6FT-97	70880	Recessed Downlighting	SLIM FIT-ACCESSORIES
RDL4-FRAME-KIT	RDL4-FRAME KIT	77223	Recessed Downlighting	SLIM FIT-ACCESSORIES
RDL6-FRAME-KIT	RDL6-FRAME KIT	77225	Recessed Downlighting	SLIM FIT-ACCESSORIES
RH4/NLED/IC/AT/F	RH4/NLED/IC/AT/F-28	70290	Recessed Downlighting	RH4
RH6/NLED/IC/AT/F	RH6/NLED/IC/AT/F-28	70291	Recessed Downlighting	RH6
RTL/400WH/7W/CTS	RTL/400WH/7W/CTS-46	71136	Recessed Downlighting	MODULES/TRIMS-PERFORMANCE SERIES-CCT SELECTABLE
RTL/403WH/7W/CTS	RTL/403WH/7W/CTS-46	71131	Recessed Downlighting	MODULES/TRIMS-PERFORMANCE SERIES-CCT SELECTABLE
RTL/43SQ/WH/90/D	RTL/43SQ/WH/90/D-28	79715	Recessed Downlighting	MODULES/TRIMS-DESIGNER SERIES
RTL/44SQ/WH/90/D	RTL/44SQ/WH/90/D-28	79717	Recessed Downlighting	MODULES/TRIMS-DESIGNER SERIES
RTL/600WH/11W/CTS	RTL/600WH/11W/CTS-46	71138	Recessed Downlighting	MODULES/TRIMS-PERFORMANCE SERIES-CCT SELECTABLE
RTL/600WH/9W/CTS	RTL/600WH/9W/CTS-46	71137	Recessed Downlighting	MODULES/TRIMS-PERFORMANCE SERIES-CCT SELECTABLE
RTL/603WH/11W/CTS	RTL/603WH/11W/CTS-46	71133	Recessed Downlighting	MODULES/TRIMS-PERFORMANCE SERIES-CCT SELECTABLE
RTL/603WH/9W/CTS	RTL/603WH/9W/CTS-46	71132	Recessed Downlighting	MODULES/TRIMS-PERFORMANCE SERIES-CCT SELECTABLE
RTL/63SQ/WH/90/D	RTL/63SQ/WH/90/D-28	79263	Recessed Downlighting	MODULES/TRIMS-DESIGNER SERIES
RTL/64SQ/WH/90/D	RTL/64SQ/WH/90/D-28	79265	Recessed Downlighting	MODULES/TRIMS-DESIGNER SERIES

CROSS REFERENCE

LISTING & RATINGS



ENERGY STAR® - A government-backed program (a joint program between the U.S. Environmental Protection Agency and the U.S. Department of Energy) helping businesses and consumers protect the environment through superior energy efficiency. If a lighting product is ENERGY STAR® compliant, that means it has passed stringent testing by the government and is considered to be energy efficient.



The DesignLights Consortium® (DLC) is a non-profit organization dedicated to accelerating the widespread adoption of high-performing commercial lighting solutions. The DLC promotes high-quality, energy-efficient lighting products in collaboration with utilities and energy efficiency program members, manufacturers, lighting designers, and federal, state, and local entities. Through these partnerships, the DLC establishes product quality specifications, facilitates thought leadership, and provides information, education, tools and technical expertise.



Products are tested by Underwriters Laboratories (UL) and meet Standards of Safety for the U.S.



Products are tested by Underwriters Laboratories (UL) to meet U.S. and Canadian Standards of Safety.



Title 20 is an appliance energy efficiency code mandated by California Energy Commission and applies to specific lighting products when they are sold or offered for sale in California. Title 20 is a product specific compliance and all regulated lighting products must be certified and registered to the Energy Commission's Database to legally sell in California.



Title 24 JA8 is set of product qualification requirements for high efficacy light sources to be installed in residential spaces in California. Eligible products must be certified and registered to the California Energy Commission's database.



Title 24 is California's Energy Code that regulates energy efficiency requirements for residential and non-residential buildings in California. Title 24 is a Building Standards Code and products identified with "Supports T24 Compliance" icon may support in meeting the energy efficiency requirements for the buildings.



ELECTRICAL TESTING LABORATORIES. ETL, like Underwriters Laboratories, Inc. (UL), is an independent, not-for-profit product safety testing and certification organization. The association of Edison Illuminating Companies, has been conducting electrical performance and reliability tests since 1896.



The National Fire Protection Association is an international nonprofit organization devoted to eliminating death, injury, property, and economic loss due to fire, electrical and related hazards. Products identified with the NFPA icon are suitable for use in applications designed to be compliant with NFPA standards.



National Sanitation Foundation certification – NSF Certified or NSF Listed items have been tested to meet strict standards for public health protection. Every aspect of a product's development is thoroughly evaluated before it can earn this certification.



A Damp Location is an exterior or interior location that is normally or periodically subject to condensation of moisture in, on or adjacent to the electrical components of a lighting fixture or ceiling fan. Indoor Damp Locations include indoor pool areas, utility rooms and over bathtubs or showers in bathrooms (without risk of direct water contact).



A Wet Location is an interior or exterior location in which water or other liquids may drip, splash or flow on or against the electrical components of a lighting fixture or ceiling fan. Outdoor Wet Locations include open-air decks and patios, uncovered porches, outdoor dining areas, exterior walls, gazebos, pergolas and walkways. Indoor Wet Locations include shower enclosures.



A fire rating signifies the duration for which a passive fire protection system can withstand a standard fire resistance test. For products listed, this is quantified as a measure of time.



Airtight rated recessed housings are more energy efficient as they limit the amount of air that can escape into the ceiling or attic, thus reducing heating and cooling costs.



Insulation Contact rated recessed housings can be used in an insulated ceiling without risk that it will overheat and cause a fire.



IP65 Rated - Protected from total dust ingress. Protected from low pressure water jets from any direction.



IP66 Rated - Protected from total dust ingress. Protected from high pressure water jets from any direction.



IP69K Rated - Protected from total dust ingress. Protected from close range, powerful, high temperature water jets (steam cleaning).



LIGHTING SOLUTIONS CATALOG

get social with us:



[/SOUTHWIRETOOLS](#)



[/TOPAZ LIGHTING](#)



[@SOUTHWIRETOOLS](#)



[@SOUTHWIRE](#)

WWW.SOUTHWIRE.COM



SCAN TO LEARN MORE

NEW YORK: 800-666-2852
CALIFORNIA: 888-551-2852
FLORIDA: 800-338-2852

All Trademarks or Registered Trademarks (TM/®) are owned or licensed by Southwire Company.
Any other TM/®- Trademark or Registered Trademark of Southwire Company.