

Category Cable: Cat 6A vs. Cat 7

-GENESIS-

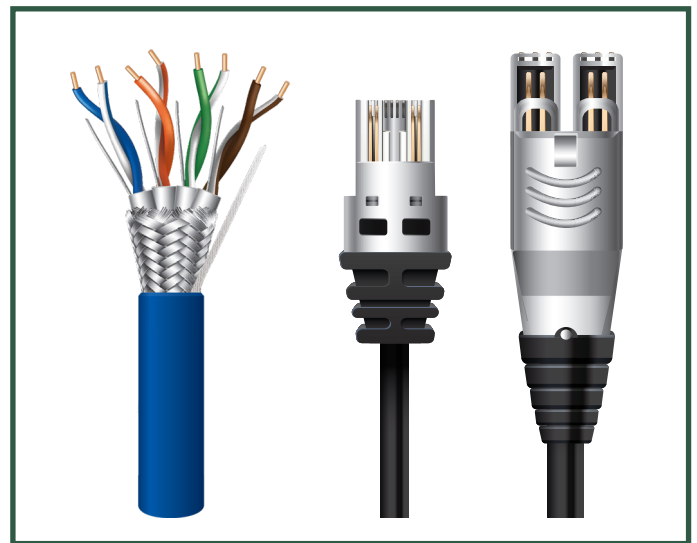
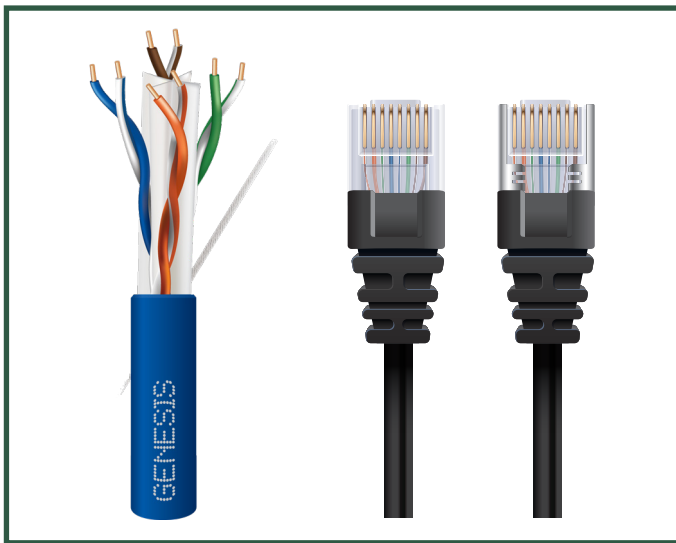
Network performance is only as strong as the weakest component. Even though Cat 7 cable offers increased bandwidth and networking speeds, connected devices limit Cat 7 cable performance. Unless the network system is designed for Cat 7 cable, verified Cat 6A and Cat 7 deliver near identical performance.

Cat 6A

Recognized by EIA/TIA and ISO standards, Cat 6A cable **optimizes device performance**. Using the same standard connector as Cat 6 and Cat 5e cables, Cat 6A is easy to install. With high-speed networking capabilities, Cat 6A **future-proofs cable systems at a cost-effective price**.

Cat 7

Unrecognized by EIA/TIA standards, Cat 7 cable is **incompatible with most devices**. Offering **slightly faster speeds** than Cat 6A, its **performance is limited** by device capabilities. Requiring additional connectors for device compatibility, Cat 7 cable offers comparable performance to Cat 6A, at an **increased price**.



Comparison Snapshot

	Cat 6A Cable	Cat 7 Cable
Standard	EIA/TIA and ISO	ISO only
Networking Speeds	10 Gbps at 100 m 40 Gbps at 30 m Up to 500 MHz	10 Gbps at 100 m 40 Gbps at 50 m Up to 600 MHz
Price	Cost-effective	More expensive