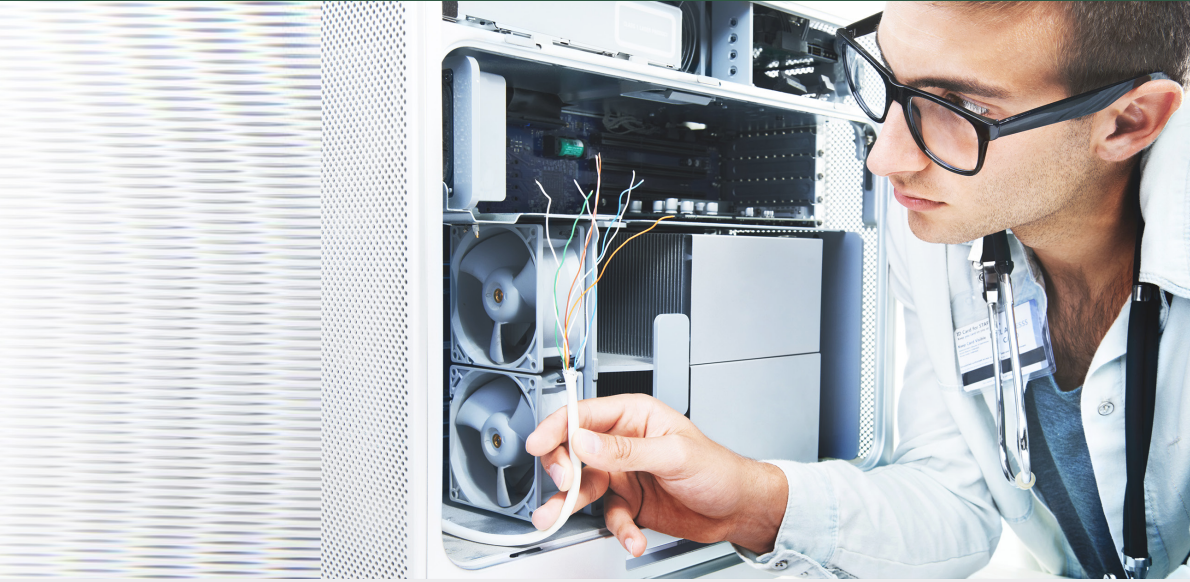


Cable Intelligence Series



The Megahertz Misconception refers to the belief that frequency is the end-all-be-all accurate indicator of network cable performance. In fact, relying on frequency alone when evaluating different types of category cable paints an incomplete picture of performance.

Bigger Isn't Always Better

Cat Cable is defined by its ability to transmit a signal with specific performance levels. Each category is defined by the Telecom Industry Association (TIA / EIA) with performance requirements "up to" a certain frequency.



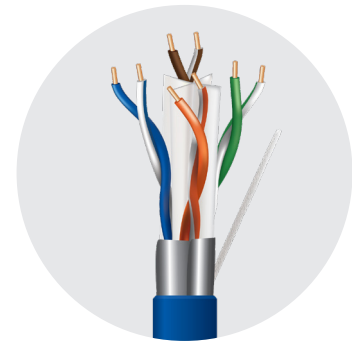
Cat 5e

Tested to 100 MHz



Cat 6

Tested to 250 MHz



Cat 6A

Tested to 500 MHz

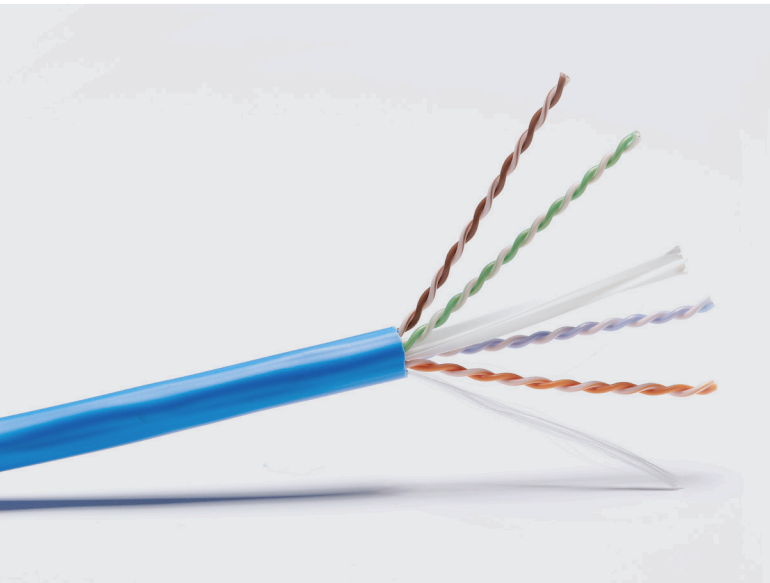
So, when Manufacturer A claims its Cat 5e cable is tested to 350 MHz, it sounds more impressive than Manufacturer B's claim of testing Cat 6 cable to the standard frequency of 250 MHz. But don't be fooled. This is not a guaranteed performance claim and should be considered irrelevant.

Verified Cat 6 cable will always perform better than verified Cat 5e, regardless of the frequency to which the cable is tested.

Get the Full Story

There are many other factors to consider when looking at network cable performance. After all, the speed of a network is limited by its weakest link. That means network components – like connectors, routers, modems, and the connected devices – are just as responsible for optimizing overall speed and performance as the cable that connects them.

And, because Ethernet networks downgrade themselves to perform at the same level as the other components, the true limiting factor, oftentimes, is the Internet connection or the device.



Moving Beyond the Myth

Do not be misled into believing that testing to a higher frequency is always better. That's exactly what dishonest manufacturers are counting on. Instead, be sure you understand all the facts and avoid being tricked by the Megahertz Misconception.

If you ever need assistance or have questions, you can call a Genesis customer service rep at **800-222-0060**. They are available to offer support all day, every business day.

For more information about Genesis Cable products and solutions, follow Genesis on LinkedIn at [linkedin.com/company/genesis-cable](https://www.linkedin.com/company/genesis-cable).